



PRODUCT MANUAL

聊城东杭国际贸易有限公司

Liaocheng DongHang International Trade Co., Ltd.



精准传递 卓越于行

Accurately delivering excellence in action

---

7/24小时在线服务

## 10多年OEM出口经验

---

100多个海外售后服务网点

一流的研发团队

---

7 /24-hour online service

## 10 years+OEM export experience

---

100+overseas after-sales service outlets

First-class R&D team



# 目录 CONTENTS

- 01 企业简介  
Company profile
- 03 车间一览  
Workshop overview
- 05 产品亮点  
Product highlights
- 07 产品类别  
Product category
- 09 产品优势  
Product advantages
- 11 技术优势  
Technical advantages
- 13 技术参数  
Technical parameter
- 29 应用领域  
Application area
- 33 燃气机组  
Gas turbine unit
- 51 售后服务  
After-sale service
- 53 合作客户  
Cooperative Customers





不断拓展的企业格局，不断壮大的商业伙伴  
让发展蓝图步步成真

The constantly expanding corporate landscape  
Continuously growing business partners  
Make the development blueprint come true step by step

## 企业简介 COMPANY PROFILE



公司位于著名的“动力之城”--中国潍坊，注册资金3800万元，拥有先进的生产线和单机测试2000KW的实验中心；拥有高端生产设备100余台，研发人员20多人，专业的生产管理团队电源专家50余人，年产发电机组100余万千瓦。产品拥有自主产权，通过了ISO9001国际质量体系认证、ISO14001环境体系认证ISO45001职业健康安全管理体系认证、五星级售后服务认证。备用电源产品包括标准型机组、静音型机组、移动发电车、拖车型机组、集装箱型机组、方舱型机组等，并提供输配电产品、专用车产品、工程安装、后市场服务等一揽子产品服务解决方案。

The company is located in the famous "City of Power" - Weifang, China, with a registered capital of 38 million yuan. It has advanced production lines and a 2000KW single machine testing experimental center; We have over 100 high-end production equipment, more than 20 R&D personnel, and a professional production management team of over 50 power experts, with an annual output of over 1 million dry watts of generator sets. The product has independent property rights and has passed ISO9001 international quality system certification, ISO14001 environmental system certification, ISO45001 occupational health and safety management system certification, and five-star after-sales service certification. Backup power products include standard units, silent units, mobile generator vehicles, trailer units, container units, cabin units, etc., and can provide a package of product service solutions such as transmission and distribution products, specialized vehicle products, engineering installation, and post market services.

# 车间一览 WORKSHOP OVERVIEW

创未来

潍坊市产品质量检验所  
发电机组实验室

本为

量



全球先发  
Global pioneer



助理双碳  
Assist in dual carbon



专利保护  
Patent protection



严格品控  
Strict quality control

## 产品亮点 Product Highlights

### 集装箱类型/静音箱类型 Container Type/Silent Box Type



#### 稳定的发电性能

结构紧凑，做工精良，动力储备大，发电性能稳定。

#### Stable power generation performance

Compact structure, excellent workmanship, large power reserve, stable power generation performance.



#### 适应性强

该产品适用于各种应用场景和高海拔地区。

#### Strong adaptability

The product is adapted to various application scenarios and high altitude areas.



#### 安全性高

配备全套机组保护系统和故障显示系统，操作方便，确保人身和机器安全。

#### High safety

Equipped with a full range of unit protection system and fault display system, easy to operate, to ensure the safety of man and machine.



### 开放式 Open Type



#### 稳定的发电性能

结构紧凑，做工精良，动力储备大，发电性能稳定。

#### Stable power generation performance

Compact structure, excellent workmanship, large power reserve, stable power generation performance.



#### 安全性高

配备全套机组保护系统和故障显示系统，操作方便，确保人身和机器安全。

#### High safety

Equipped with a full range of unit protection system and fault display system, easy to operate, to ensure the safety of man and machine.



#### 适应性强

高效的减振系统设计吸收了机组95%以上的振动，大大降低了对基础的要求。多级防护等级IP21-23可选设计，可适应不同机房环境。

#### Strong adaptability

Highly efficient vibration damping system design absorbs more than 95% of the unit's vibration, significantly reducing the requirements for foundation. Multi-level protection class IP21-23 optional design, can adapt to different server room environment.

### 三个产品类别

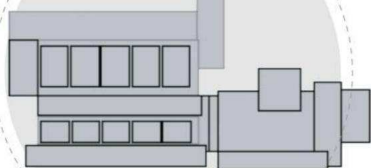
#### Three Product Categories

柴油发电机组 Diesel genset

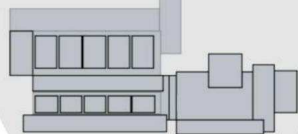
燃气发电机组 Gas genset

甲醇发电机组 Methanol genset

Diesel



Gas



Methanol



Open type  
14~3190kW



Container type  
640~ 3190kW



Silent box type  
14~660kW



Trailer type



Vehicle-mounted Type



### 五个产品类别

#### Five Product Types

开放式 Open type

集装箱类型 Container type

静音类型 Silent box type

拖车类型 Trailer type

车载式 Vehicle-mounted type

## 八大优势 Eight Strengths



### 高效降噪

采用特殊的降噪消声材料，通过优化组合各种降噪解决方案，大大降低了机组的运行噪声，减少了对周围环境的影响。

### Highly efficient noise reduction

The use of special noise reduction and muffling materials and the optimization and combination of various noise reduction solutions through simulation greatly reduce the operating noise of the unit and reduce the impact on the surrounding environment.



### 顶级品牌发动机

采用世界顶级品牌发动机，最先进的燃油高压共轨技术（部分车型），以达到最佳的燃油消耗率。

### Top Brand Engines

Adopting the world's top brand engine, the most advanced fuel high-pressure common rail technology (for some models), in order to achieve the best fuel consumption rate.



### 模块化设计

模块化设计可以更好地满足客户特定的需求和应用，以及当地的监管要求。

### Modular design

The modular design allows for a better fit to customer-specific needs and applications, as well as local regulatory requirements.



### 高效交流发电机

交流发电机的励磁系统采用最先进的固态自动电压调节器（AVR）或数字电压调节器。绕组由高质量、耐高温高压的漆包线、绝缘材料制成，以确保电器的可靠性和绝缘安全。

### High efficiency alternator

The excitation system of the alternator adopts the most advanced solid-state automatic voltage regulator (AVR) or digital voltage regulator (DVR). The windings are made of high-quality, high-temperature and high-voltage resistant enameled wires, insulating materials and insulating varnishes to ensure the reliability of the electrical appliances and insulation safety.



### 最大化收益

通过产品设计的标准化，零部件具有高度的通用性，以较低的材料成本制造出更好的产品；供货周期短，可靠性高，检修周期长；先进的燃油喷射控制系统，动力强劲，油耗低，运行成本低。

### Maximize benefits

Through the standardization of product design, parts and components are highly versatile, and better products are manufactured with lower material costs; Short supply cycle, high reliability and long overhaul period; Advanced fuel injection control system, strong power, low fuel consumption rate, low operating costs.



### 运行可靠

通过三维结构对机组进行承载和振动计算，以及多次长期运行试验，有效降低了机组的振动，确保了稳定可靠的运行。该系统可自启动、自切换、自诊断，具有云监控服务平台和周到的维护提醒服务。

### Reliable operation

Through three-dimensional construction, finite element simulation software for load bearing and vibration calculation of the unit and many long-time operation tests, the vibration of the unit is effectively reduced to ensure stable and reliable operation. The system can be self-started, self-switched and self-diagnosed, with cloud monitoring service platform and considerate maintenance reminder service.



### 控制系统

采用微处理器作为数字系统的核心，可以选择多种语言通过连接到电源的ATS实现自动控制，实现公用电源和备用电源之间的自动切换，还可以实现多台发电机组并联连接，进一步满足发电机组的供电需求。

### Control system

Adopt microprocessor as the core of the digital system, a variety of languages can be selected to achieve automatic control through the ATS connected to the power supply to realize the automatic switching between the utility power and backup power, but also to achieve a number of generator sets connected in parallel to further meet the demand for power supply of generator sets.



### 设备安全

控制系统与上位机采用快捷航空快插连接，电缆出口采用优质填料函固定，更安全。

### Equipment safety

The control system and the host computer are connected by quick-connect aviation quick-plug, and the cable outlet is fastened by high-quality stuffing box, which is safer.



## 技术优势 Technical Advantages

### 集成解决方案 Integrated solutions

为大型项目提供电源集成解决方案；  
为大型电站提供设计、制造、安装、调试和售后服务  
等全方位服务；  
满足不同尺寸要求，全方位满足客户定制服务。

Provide integrated solutions for power supply for large projects;  
Provide a full range of services such as design, manufacture, installation, commissioning and after-sales service for large scale power stations;  
Meeting different kinds of size requirements and satisfying customers' customized services in an all-round way.



医院  
Hospital



数据中心  
Data center



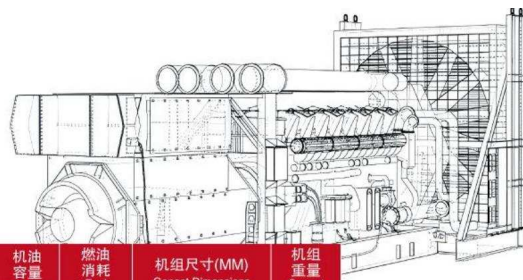
矿山企业  
Mine enterprises



大型商场  
Large supermarket

- 规格多，续航里程全，燃油经济性好，动力可靠，使用寿命长；
- 结构紧凑，做工精良，动力储备大；
- 高效的冷却系统，机组排气散热充分；
- 配备接地保护、急停按钮、快速插座，操作简单；
- 配备全套机组保护系统和故障显示系统，确保人身和机器安全。

- More specifications, full range, better fuel economy, power and reliability, long working life;
- Compact structure, excellent workmanship, large power reserve;
- Efficient cooling system, sufficient unit exhaust heat dissipation;
- Equipped with grounding protection, emergency stop button, quick socket, simple operation;
- Equipped with a full range of unit protection system and fault display system to ensure the safety of man and machine.



**东风康明斯国二排放系列发电机组技术参数**  
 Technical Parameters for Dongfeng Cummins T2 Series

| 机组型号<br>Model | 机组功率<br>Prime Power (KW) | 柴油机型号<br>Engine Model | 柴油机功率<br>Engine Power (KW) | 缸数<br>No. of Cylinder | 缸径<br>Bore (mm) | 行程<br>Stroke (mm) | 排量<br>Displacement (L) | 机油容量<br>Lubrication Oil (L) | 燃油消耗<br>Fuel Consumption (g/kw.h) | 机组尺寸(MM)<br>Genset Dimensions L x W x H | 机组重量<br>Genset Weight (KG) |
|---------------|--------------------------|-----------------------|----------------------------|-----------------------|-----------------|-------------------|------------------------|-----------------------------|-----------------------------------|---|----------------------------|
| BC-24         | 24                       | 4B3.9-G2              | 27                         | 4                     | 102             | 120               | 3.9                    | 11                          | 209                               | 1820x760x1280                           | 876                        |
| BC-25         | 25                       | 4B3.9-G12             | 30                         | 4                     | 102             | 120               | 3.9                    | 11                          | 209                               | 1820x760x1280                           | 876                        |
| BC-30         | 30                       | 4BT3.9-G2             | 40                         | 4                     | 102             | 120               | 3.9                    | 11                          | 209                               | 1820x760x1280                           | 893                        |
| BC-50         | 50                       | 4BTA3.9-G2            | 55                         | 4                     | 102             | 120               | 3.9                    | 11                          | 209                               | 1722x730x11000                          | 970                        |
| BC-50         | 50                       | 4BTA3.9-G2            | 64                         | 4                     | 102             | 120               | 3.9                    | 11                          | 209                               | 1800x720x1200                           | 970                        |
| BC-70         | 70                       | 4BTA3.9-G11           | 80                         | 4                     | 102             | 120               | 3.9                    | 16.4                        | 209                               | 1900x760x1220                           | 970                        |
| BC-80         | 80                       | 4BTA3.9-G13           | 97                         | 4                     | 102             | 120               | 3.9                    | 16.4                        | 209                               | 1900x760x1220                           | 970                        |
| BC-80         | 80                       | 6BT5.9-G2             | 92                         | 6                     | 102             | 120               | 5.9                    | 20                          | 210                               | 2000x800x1300                           | 1050                       |
| BC-90         | 90                       | 6BT5.9-G2             | 106                        | 6                     | 102             | 120               | 5.9                    | 20                          | 210                               | 2200x800x1160                           | 1200                       |
| BC-100        | 100                      | 6BTA5.9-G2            | 116                        | 6                     | 102             | 120               | 5.9                    | 20                          | 210                               | 2200x800x1160                           | 1200                       |
| BC-100        | 100                      | 6BTAA5.9-G2           | 130                        | 6                     | 102             | 120               | 5.9                    | 20                          | 206                               | 2160x810x1250                           | 1100                       |
| BC-120        | 120                      | 6BTAA5.9-G12          | 155                        | 6                     | 102             | 135               | 5.9                    | 20                          | 207                               | 2400x820x1330                           | 1400                       |
| BC-150        | 150                      | 6CTA8.3-G2            | 180                        | 6                     | 114             | 135               | 8.3                    | 20                          | 207                               | 2400x820x1330                           | 1400                       |
| BC-180        | 180                      | 6CTAA8.3-G2           | 203                        | 6                     | 114             | 135               | 8.3                    | 35                          | 206                               | 2400x820x1330                           | 1400                       |
| BC-200        | 200                      | 6CTAA8.3-G9           | 231                        | 6                     | 114             | 135               | 8.3                    | 35                          | 206                               | 2400x820x1330                           | 1600                       |
| BC-210        | 210                      | 6LTAA8.9-G2           | 240                        | 6                     | 114             | 145               | 8.9                    | 35                          | 206                               | 2600x900x1600                           | 1800                       |
| BC-220        | 220                      | 6LTAA8.9-G3           | 250                        | 6                     | 114             | 145               | 8.9                    | 35                          | 206                               | 2600x900x1600                           | 1900                       |
| BC-240        | 240                      | 6LTAA9.5-G3           | 280                        | 6                     | 116.5           | 148               | 9.5                    | 35                          | 194                               | 2900x1100x1550                          | 2300                       |
| BC-280        | 280                      | 6LTAA9.5-G1           | 320                        | 6                     | 116.5           | 148               | 9.5                    | 35                          | 200                               | 2900x1100x1550                          | 2300                       |
| BC-340        | 340                      | 6ZTAA13-G3            | 380                        | 6                     | 130             | 163               | 13                     | 45.42                       | 192                               | 3100x1250x1800                          | 3100                       |
| BC-380        | 380                      | 6ZTAA13-G2            | 415                        | 6                     | 130             | 163               | 13                     | 45.42                       | 194                               | 3100x1250x1800                          | 3100                       |
| BC-380        | 380                      | 6ZTAA13-G4            | 415                        | 6                     | 130             | 163               | 13                     | 45.42                       | 194                               | 3100x1250x1800                          | 3100                       |
| BC-380        | 380                      | QSZ13-G2              | 440                        | 6                     | 130             | 163               | 13                     | 46                          | 204                               | 3100x1250x1800                          | 3100                       |
| BC-400        | 400                      | QSZ13-G5              | 470                        | 6                     | 130             | 163               | 13                     | 75.33                       | 204                               | 3100x1250x1800                          | 3100                       |
| BC-400        | 400                      | QSZ13-G3              | 470                        | 6                     | 130             | 163               | 13                     | 46                          | 204                               | 3400x1200x1800                          | 3200                       |
| BC-450        | 450                      | QSZ13-G10             | 509                        | 6                     | 130             | 163               | 13                     | 75.33                       | 196                               | 3400x1200x1800                          | 3200                       |

**东风康明斯国三排放系列发电机组技术参数**  
 Technical Parameters for Dongfeng Cummins T3 Series

| 机组型号<br>Model | 机组功率<br>Prime Power (KW) | 柴油机型号<br>Engine Model | 柴油机功率<br>Engine Power (KW) | 缸数<br>No. of Cylinder | 缸径<br>Bore (mm) | 行程<br>Stroke (mm) | 排量<br>Displacement (L) | 机油容量<br>Lubrication Oil (L) | 燃油消耗<br>Fuel Consumption (g/kw.h) | 机组尺寸(MM)<br>Genset Dimensions L x W x H | 机组重量<br>Genset Weight (KG) |
|---------------|--------------------------|-----------------------|----------------------------|-----------------------|-----------------|-------------------|------------------------|-----------------------------|-----------------------------------|---|----------------------------|
| BC-25         | 25                       | QSB3.9-G31            | 27                         | 4                     | 102             | 120               | 3.9                    | 11                          | 209                               | 1820x760 x1280                          | 893                        |
| BC-30         | 30                       | QSB3.9-G33            | 40                         | 4                     | 102             | 120               | 3.9                    | 11                          | 209                               | 1820x760 x1280                          | 893                        |
| BC-50         | 50                       | QSB3.9-G35            | 64                         | 4                     | 102             | 120               | 3.9                    | 11                          | 209                               | 1820x760x1280                           | 893                        |
| BC-50         | 50                       | QSB3.9-G2             | 70                         | 4                     | 102             | 120               | 3.9                    | 11                          | 212                               | 1800x720x1280                           | 920                        |
| BC-75         | 75                       | QSB3.9-G3             | 88                         | 4                     | 102             | 120               | 3.9                    | 11                          | 212                               | 1820x760 x1280                          | 893                        |
| BC-75         | 75                       | QSB3.9-G37            | 92                         | 4                     | 102             | 120               | 3.9                    | 11                          | 212                               | 1820x760x1280                           | 893                        |
| BC-90         | 90                       | QSB5.9-G2             | 106                        | 6                     | 102             | 120               | 5.9                    | 16.4                        | 217                               | 2200x800x1190                           | 1350                       |
| BC-90         | 90                       | QSB3.9-G39            | 110                        | 4                     | 102             | 120               | 3.9                    | 11                          | 204                               | 2000x800x1300                           | 1050                       |
| BC-100        | 100                      | QSB5.9-G30            | 128                        | 6                     | 102             | 120               | 5.9                    | 16.4                        | 206                               | 2000x800x1300                           | 1050                       |
| BC-110        | 110                      | QSB5.9-G3             | 132                        | 6                     | 102             | 120               | 5.9                    | 16.4                        | 206                               | 2250x830x1350                           | 1350                       |
| BC-120        | 120                      | QSB5.9-G31            | 145                        | 6                     | 102             | 120               | 5.9                    | 16.4                        | 206                               | 2250x830x1350                           | 1350                       |
| BC-130        | 130                      | QSB6.7-G3             | 166                        | 6                     | 107             | 124               | 6.7                    | 20                          | 210                               | 2500x860x1350                           | 2200                       |
| BC-130        | 130                      | QSB5.9-G33            | 175                        | 6                     | 102             | 120               | 5.9                    | 16.4                        | 206                               | 2500x860x1350                           | 2200                       |
| BC-160        | 160                      | QSB6.7-G4             | 185                        | 6                     | 107             | 124               | 6.7                    | 20                          | 210                               | 2500x860x1350                           | 2200                       |
| BC-160        | 160                      | QSB6.7-G32            | 190                        | 6                     | 107             | 124               | 6.7                    | 20                          | 200                               | 2500x860x1350                           | 200                        |
| BC-180        | 180                      | QSL8.9-G2             | 226                        | 6                     | 114             | 144.5             | 8.9                    | 20                          | 216                               | 2600x900x1600                           | 2600                       |
| BC-200        | 200                      | QSB6.7-G31            | 230                        | 6                     | 107             | 124               | 6.7                    | 20                          | 200                               | 2600x900x1600                           | 500                        |
| BC-200        | 200                      | QSL8.9-G3             | 242                        | 6                     | 114             | 145               | 8.9                    | 30                          | 216                               | 2600x900x1600                           | 2600                       |
| BC-220        | 220                      | QSL8.9-G4             | 258                        | 6                     | 114             | 145               | 8.9                    | 30                          | 216                               | 2600x900x1600                           | 2600                       |
| BC-220        | 220                      | QSL8.9-G34            | 260                        | 6                     | 114             | 145               | 8.9                    | 30                          | 216                               | 2600x900x1600                           | 2600                       |
| BC-250        | 250                      | QSL8.9-G33            | 292                        | 6                     | 114             | 145               | 8.9                    | 30                          | 216                               | 2600x900x1600                           | 2600                       |
| BC-280        | 280                      | QSL8.9-G30            | 331                        | 6                     | 114             | 145               | 8.9                    | 30                          | 216                               | 2600x900x1600                           | 2600                       |
| BC-320        | 320                      | QSZ13-G6              | 374                        | 6                     | 130             | 163               | 13                     | 76                          | 209                               | 3100x1250x1800                          | 3100                       |
| BC-360        | 360                      | QSZ13-G7              | 419                        | 6                     | 130             | 163               | 13                     | 76                          | 209                               | 3100x1250x1800                          | 3100                       |



### 重庆康明斯国二排放系列发电机组技术参数 Technical Parameters for Chongqing Cummins T2 Series



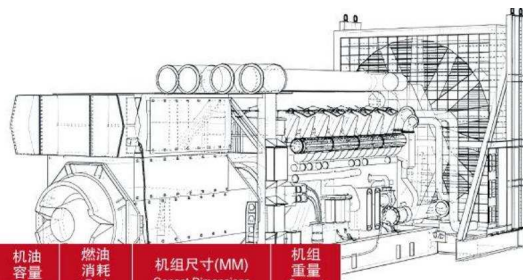
### 重庆康明斯国三排放系列发电机组技术参数 Technical Parameters for Chongqing Cummins T3 Series

| 机组型号<br>Model | 机组功率<br>Prime Power (KW) | 柴油机型号<br>Engine Model | 柴油功率<br>Engine Power (KW) | 缸数<br>No. of Cylinder | 缸径<br>Bore (mm) | 行程<br>Stroke (mm) | 排量<br>Displacement (L) | 机油容量<br>Lubrication Oil (L) | 燃油消耗<br>Fuel Consumption (g/kw.h) | 机组尺寸(MM)<br>Genset Dimensions L x W x H | 机组重量<br>Genset Weight (KG) |
|---------------|--------------------------|-----------------------|---------------------------|-----------------------|-----------------|-------------------|------------------------|-----------------------------|-----------------------------------|---|----------------------------|
| BC-220        | 220                      | MTA11-G2              | 246                       | 6                     | 125             | 147               | 10.8                   | 39                          | 210                               | 2900x1120x1500                          | 2300                       |
| BC-220        | 220                      | NT855-GA              | 254                       | 6                     | 140             | 152               | 14                     | 37                          | 206                               | 2850x1050x1700                          | 2200                       |
| BC-220        | 220                      | NTA855-G1             | 265                       | 6                     | 140             | 152               | 14                     | 38.6                        | 206                               | 2900x1020x1510                          | 2200                       |
| BC-250        | 250                      | NTA855-G1A            | 291                       | 6                     | 140             | 152               | 14                     | 38.6                        | 206                               | 2900x1020x1510                          | 2200                       |
| BC-280        | 280                      | MTAA11-G3             | 310                       | 6                     | 125             | 147               | 10.8                   | 39                          | 210                               | 2900x1120x1510                          | 2300                       |
| BC-280        | 280                      | NTA855-G1B            | 321                       | 6                     | 140             | 152               | 14                     | 38.6                        | 206                               | 2900x1020x1510                          | 2200                       |
| BC-300        | 300                      | NTA855-G2A            | 343                       | 6                     | 140             | 152               | 14                     | 38.6                        | 206                               | 3050x1000x1650                          | 2300                       |
| BC-310        | 310                      | NTA855-G4             | 351                       | 6                     | 140             | 152               | 14                     | 38.6                        | 210                               | 3100x1050x1700                          | 2400                       |
| BC-330        | 330                      | NTAA855-G7            | 377                       | 6                     | 140             | 152               | 14                     | 38.6                        | 204                               | 2970x1050x1700                          | 2400                       |
| BC-360        | 360                      | NTAA855-G7A           | 407                       | 6                     | 140             | 152               | 14                     | 38.6                        | 210                               | 3180x1170x1660                          | 3000                       |
| BC-400        | 400                      | KTA19-G3              | 448                       | 6                     | 159             | 159               | 18.9                   | 50                          | 203                               | 3380x1270x1900                          | 3500                       |
| BC-450        | 450                      | KTA19-G3A             | 504                       | 6                     | 159             | 159               | 18.9                   | 50                          | 203                               | 3380x1270x1900                          | 3650                       |
| BC-450        | 450                      | KTA19-G4              | 504                       | 6                     | 159             | 159               | 18.9                   | 50                          | 203                               | 3380x1270x1900                          | 3650                       |
| BC-500        | 500                      | KTAA19-G5             | 555                       | 6                     | 159             | 159               | 18.9                   | 50                          | 203                               | 3520x1580x1850                          | 3700                       |
| BC-520        | 520                      | KTAA19-G6             | 570                       | 6                     | 159             | 159               | 18.9                   | 50                          | 203                               | 3520x1580x1850                          | 3700                       |
| BC-520        | 520                      | KTA19-G8              | 575                       | 6                     | 159             | 159               | 18.9                   | 50                          | 206                               | 3380x1280x2000                          | 3800                       |
| BC-550        | 550                      | KTAA19-G6A            | 610                       | 6                     | 159             | 159               | 18.9                   | 50                          | 206                               | 3500x1600x2000                          | 4100                       |
| BC-550        | 550                      | KTAA19-G7             | 610                       | 6                     | 159             | 159               | 18.9                   | 50                          | 206                               | 3380x1280x2000                          | 3700                       |
| BC-560        | 560                      | KT38-G                | 616                       | 12                    | 159             | 159               | 37.8                   | 135                         | 213                               | 4400x2100x1800                          | 7000                       |
| BC-630        | 630                      | KTA38-G1              | 701                       | 12                    | 159             | 159               | 37.8                   | 135                         | 213                               | 4400x2100x1800                          | 7000                       |
| BC-640        | 640                      | KT38-GA               | 711                       | 12                    | 159             | 159               | 37.8                   | 135                         | 213                               | 4400x2100x1800                          | 7000                       |
| BC-640        | 640                      | KTA38-G2              | 731                       | 12                    | 159             | 159               | 37.8                   | 135                         | 213                               | 4400x2100x1800                          | 7000                       |
| BC-700        | 700                      | KTA38-G2B             | 790                       | 12                    | 159             | 159               | 37.8                   | 135                         | 213                               | 4500x2100x1800                          | 8500                       |
| BC-800        | 800                      | KTA38-G2A             | 896                       | 12                    | 159             | 159               | 37.8                   | 135                         | 210                               | 4500x2100x1800                          | 8700                       |
| BC-900        | 900                      | KTA38-G5              | 970                       | 12                    | 159             | 159               | 37.8                   | 135                         | 210                               | 4500x2100x1800                          | 9000                       |
| BC-1000       | 1000                     | KTA38-G9              | 1090                      | 12                    | 159             | 159               | 37.8                   | 135                         | 210                               | 5000x1900x2450                          | 9000                       |
| BC-1100       | 1100                     | KTA50-G3              | 1227                      | 16                    | 159             | 159               | 50                     | 136                         | 206                               | 5562x2033x2310                          | 11140                      |
| BC-1320       | 1320                     | KTA50-G8              | 1429                      | 16                    | 159             | 159               | 50                     | 136                         | 206                               | 5562x2033x2310                          | 11140                      |
| BC-1320       | 1320                     | KTA50-GS8             | 1429                      | 16                    | 159             | 159               | 50                     | 136                         | 206                               | 5562x2033x2310                          | 11140                      |
| BC-1500       | 1500                     | KTA50-G15X            | 1656                      | 16                    | 159             | 159               | 50                     | 136                         | 206                               | 5562x2033x2310                          | 11140                      |

| 机组型号<br>Model | 机组功率<br>Prime Power (KW) | 柴油机型号<br>Engine Model | 柴油功率<br>Engine Power (KW) | 缸数<br>No. of Cylinder | 缸径<br>Bore (mm) | 行程<br>Stroke (mm) | 排量<br>Displacement (L) | 机油容量<br>Lubrication Oil (L) | 燃油消耗<br>Fuel Consumption (g/kw.h) | 机组尺寸(MM)<br>Genset Dimensions L x W x H | 机组重量<br>Genset Weight (KG) |
|---------------|--------------------------|-----------------------|---------------------------|-----------------------|-----------------|-------------------|------------------------|-----------------------------|-----------------------------------|---|----------------------------|
| BC-240        | 240                      | QSM11-G1              | 270                       | 6                     | 125             | 147               | 10.8                   | 36.7                        | 224                               | 2900x1120x1500                          | 2300                       |
| BC-270        | 270                      | QSM11-G2              | 300                       | 6                     | 125             | 147               | 10.8                   | 36.7                        | 217                               | 2900x1120x1500                          | 2300                       |
| BC-300        | 300                      | QSM11-G3              | 330                       | 6                     | 125             | 147               | 10.8                   | 36.7                        | 206.02                            | 2900x1120x1500                          | 2300                       |
| BC-310        | 310                      | QSM11-G4              | 350                       | 6                     | 125             | 147               | 10.8                   | 36.7                        | 210.18                            | 2900x1120x1500                          | 2300                       |
| BC-320        | 320                      | QSM11-G5              | 360                       | 6                     | 125             | 147               | 10.8                   | 36.7                        | 206.94                            | 2900x1120x1500                          | 2300                       |
| BC-330        | 330                      | QSM11-G6              | 377                       | 6                     | 125             | 147               | 10.8                   | 36.7                        | 205.01                            | 2900x1120x1500                          | 2300                       |
| BC-220        | 220                      | QSNT-G6               | 265                       | 6                     | 140             | 152               | 14                     | 38.6                        | 210                               | 2900x1120x1500                          | 2300                       |
| BC-250        | 250                      | QSNT-G7               | 291                       | 6                     | 140             | 152               | 14                     | 38.6                        | 215                               | 2900x1120x1500                          | 2300                       |
| BC-280        | 280                      | QSNT-G1               | 325                       | 6                     | 140             | 152               | 14                     | 38.6                        | 215                               | 2900x1120x1500                          | 2300                       |
| BC-320        | 320                      | QSNT-G2               | 358                       | 6                     | 140             | 152               | 14                     | 38.6                        | 215                               | 2900x1120x1500                          | 2300                       |
| BC-350        | 350                      | QSNT-G3               | 392                       | 6                     | 140             | 152               | 14                     | 38.6                        | 215                               | 2900x1120x1500                          | 2300                       |
| BC-400        | 400                      | QSK19-G14             | 447                       | 6                     | 159             | 159               | 18.9                   | 84                          | 215                               | 3380x1280x2000                          | 4000                       |
| BC-400        | 400                      | QSK19-G15             | 448                       | 6                     | 159             | 159               | 18.9                   | 84                          | 215                               | 3380x1280x2000                          | 4000                       |
| BC-400        | 400                      | QSNT-G4X              | 448                       | 6                     | 140             | 152               | 14                     | 38.6                        | 215                               | 2900x1120x1500                          | 2300                       |
| BC-440        | 440                      | QSK19-G16             | 493                       | 6                     | 159             | 159               | 18.9                   | 84                          | 215                               | 3380x1280x2000                          | 4000                       |
| BC-450        | 450                      | QSK19-G13             | 501                       | 6                     | 159             | 159               | 18.9                   | 84                          | 215                               | 3380x1280x2000                          | 4000                       |
| BC-500        | 500                      | QSK19-G17             | 558                       | 6                     | 159             | 159               | 18.9                   | 84                          | 206                               | 3380x1280x2000                          | 4000                       |
| BC-500        | 500                      | QSK19-G12             | 565                       | 6                     | 159             | 159               | 18.9                   | 84                          | 217                               | 3380x1280x2000                          | 4000                       |
| BC-510        | 510                      | KTA19-G8E             | 561                       | 6                     | 159             | 159               | 19                     | 50                          | 207                               | 3380x1280x2000                          | 4000                       |
| BC-520        | 520                      | QSK19-G6              | 592                       | 6                     | 159             | 159               | 18.9                   | 84                          | 199                               | 3380x1280x2000                          | 4000                       |
| BC-550        | 550                      | KTA19-G8A             | 610                       | 6                     | 159             | 159               | 19                     | 50                          | 205                               | 3550x1470x2200                          | 4100                       |
| BC-560        | 560                      | QSK19-G18             | 624                       | 6                     | 159             | 159               | 18.9                   | 84                          | 201                               | 3550x1470x2200                          | 4100                       |
| BC-570        | 570                      | QSK19-G4              | 634                       | 6                     | 159             | 159               | 18.9                   | 84.4                        | 216                               | 3550x1470x2200                          | 4100                       |
| BC-600        | 600                      | KTA19-G9A             | 660                       | 6                     | 159             | 159               | 19                     | 50                          | 207                               | 3550x1470x2200                          | 4100                       |
| BC-600        | 600                      | QSK19-G19             | 671                       | 6                     | 159             | 159               | 18.9                   | 84.4                        | 197                               | 3550x1470x2200                          | 4100                       |
| BC-600        | 600                      | QSK19-G11             | 667                       | 6                     | 159             | 159               | 18.9                   | 84.4                        | 197                               | 3550x1470x2200                          | 4100                       |
| BC-660        | 660                      | QSK19-G20             | 739                       | 6                     | 159             | 159               | 18.9                   | 84.4                        | 194                               | 3550x1470x2200                          | 4400                       |
| BC-660        | 660                      | QSK38-G8              | 730                       | 12                    | 159             | 159               | 37.7                   | 170.3                       | 216                               | 4400x2100x1800                          | 7000                       |
| BC-700        | 700                      | KTA38-G2E             | 770                       | 12                    | 159             | 159               | 38                     | 135                         | 208                               | 4500x2100x1800                          | 8500                       |
| BC-710        | 710                      | QSK38-G7              | 783                       | 12                    | 159             | 159               | 37.7                   | 170.3                       | 212                               | 4500x2100x1800                          | 8500                       |
| BC-720        | 720                      | QSK19-G21             | 801                       | 12                    | 159             | 159               | 18.9                   | 84.4                        | 196                               | 4500x2100x1800                          | 8700                       |
| BC-800        | 800                      | KTA38-G5E             | 880                       | 12                    | 159             | 159               | 38                     | 135                         | 205                               | 4500x2100x1800                          | 8700                       |
| BC-800        | 800                      | QSK38-G6              | 878                       | 12                    | 159             | 159               | 37.7                   | 170.3                       | 212                               | 4500x2100x1800                          | 8700                       |
| BC-800        | 800                      | QSK38-G9              | 911                       | 12                    | 159             | 159               | 37.8                   | 117                         | 220                               | 4500x2100x1800                          | 8700                       |
| BC-890        | 890                      | QSK38-G1              | 970                       | 12                    | 159             | 159               | 37.8                   | 170.3                       | 204                               | 4500x2100x1800                          | 8700                       |
| BC-900        | 900                      | KTA38-G7E             | 990                       | 12                    | 159             | 159               | 38                     | 135                         | 203                               | 4500x2100x1800                          | 8700                       |
| BC-880        | 880                      | QSK38-G10             | 997                       | 12                    | 159             | 159               | 37.8                   | 117                         | 214                               | 4500x2100x1800                          | 8700                       |
| BC-1000       | 1000                     | QSK38-G2              | 1096                      | 12                    | 159             | 159               | 37.7                   | 170.3                       | 200                               | 4500x2100x1800                          | 8700                       |
| BC-1000       | 1000                     | KTA38-G9E             | 1100                      | 12                    | 159             | 159               | 37.8                   | 135                         | 214                               | 5000x1900x2450                          | 9000                       |
| BC-1000       | 1000                     | QSK38-G11             | 1130                      | 12                    | 159             | 159               | 37.8                   | 117                         | 206                               | 5000x1900x2450                          | 9000                       |
| BC-1100       | 1100                     | KTA50-G3E             | 1210                      | 16                    | 159             | 159               | 50.3                   | 176.8                       | 204                               | 5000x1900x2450                          | 9000                       |
| BC-1100       | 1100                     | QSK38-G5              | 1224                      | 12                    | 159             | 159               | 37.7                   | 170.3                       | 208                               | 4500x2100x1800                          | 8700                       |
| BC-1120       | 1120                     | QSK38-G12             | 1254                      | 12                    | 159             | 159               | 37.8                   | 117                         | 199                               | 4500x2100x1800                          | 8700                       |
| BC-1200       | 1200                     | KTA50-G7E             | 1320                      | 16                    | 159             | 159               | 50.3                   | 176.8                       | 204                               | 5300x2000x2550                          | 11000                      |
| BC-1200       | 1200                     | QSK38-G19             | 1333                      | 12                    | 159             | 159               | 37.7                   | 170.3                       | 207                               | 5000x1900x2450                          | 9000                       |
| BC-1250       | 1250                     | QSK38-G13             | 1371                      | 12                    | 159             | 159               | 37.8                   | 117                         | 199                               | 5000x1900x2450                          | 9000                       |
| BC-1300       | 1300                     | KTA50-G8E             | 1430                      | 16                    | 159             | 159               | 50.3                   | 176.8                       | 204                               | 5300x2000x2550                          | 11000                      |
| BC-1340       | 1340                     | QSK38-G14             | 1489                      | 12                    | 159             | 159               | 37.8                   | 117                         | 198                               | 5300x2000x2550                          | 11000                      |
| BC-1400       | 1400                     | QSK38-G15             | 1548                      | 12                    | 159             | 159               | 37.8                   | 117                         | 198                               | 5300x2000x2550                          | 11000                      |
| BC-1500       | 1500                     | KTA50-G15A            | 1650                      | 16                    | 159             | 159               | 50.3                   | 234.7                       | 205                               | 5562x2033x2310                          | 11140                      |
| BC-1600       | 1600                     | KTA50-G16A            | 1760                      | 16                    | 159             | 159               | 50.3                   | 234.7                       | 205                               | 5562x2033x2310                          | 11140                      |



珀金斯系列发电机组技术参数  
Technical Parameters for Perkins Series



| 机组型号<br>Model | 机组功率<br>Prime Power (KW) | 柴油机型号<br>Engine Model | 柴油功率<br>Engine Power (KW) | 缸数<br>No. of Cylinder | 缸径<br>Bore (mm) | 行程<br>Stroke (mm) | 排量<br>Displacement (L) | 机油容量<br>Lubrication Oil (L) | 燃油消耗<br>Fuel Consumption (g/kw.h) | 机组尺寸(MM)<br>Genset Dimensions L x W x H | 机组重量<br>Genset Weight (KG) |
|---------------|--------------------------|-----------------------|---------------------------|-----------------------|-----------------|-------------------|------------------------|-----------------------------|-----------------------------------|---|----------------------------|
| BC-24         | 24                       | 1103A-33G             | 31                        | 3                     | 105             | 127               | 3.3                    | 8.3                         | 210                               | 1700x700x1410                           | 1000                       |
| BC-36         | 36                       | 1103A-33TG1           | 46.5                      | 3                     | 105             | 127               | 3.3                    | 7.9                         | 210                               | 1700x700x1410                           | 1020                       |
| BC-50         | 50                       | 1104A-44TG1           | 65.5                      | 4                     | 105             | 127               | 4.4                    | 8.0                         | 210                               | 1700x700x1410                           | 1020                       |
| BC-50         | 50                       | 1103A-33TG2           | 60.5                      | 3                     | 105             | 127               | 3.3                    | 8.3                         | 210                               | 1700x700x1410                           | 1020                       |
| BC-80         | 80                       | 1104D-E44TAG2         | 94.6                      | 4                     | 105             | 127               | 4.4                    | 8.0                         | 205                               | 2080x775x1450                           | 1400                       |
| BC-100        | 100                      | 1106A-70TG1           | 139.9                     | 6                     | 105             | 135               | 7.01                   | 16.5                        | 205                               | 2250x800x1450                           | 1800                       |
| BC-120        | 120                      | 1106A-70TAG2          | 153.5                     | 6                     | 105             | 135               | 7.01                   | 16.5                        | 205                               | 2250x800x1450                           | 1800                       |
| BC-160        | 160                      | 1106A-70TAG4          | 202                       | 6                     | 105             | 135               | 7.01                   | 16.5                        | 205                               | 2700x900x1700                           | 2000                       |
| BC-185        | 185                      | 1506A-E88TAG2         | 223                       | 6                     | 112             | 149               | 8.8                    | 41                          | 205                               | 2700x900x1700                           | 2000                       |
| BC-240        | 240                      | 1506A-E88TAG5         | 293                       | 6                     | 167             | 146               | 9.3                    | 33.2                        | 198                               | 2900x1000x1700                          | 2100                       |
| BC-280        | 280                      | 2206C-E13TAG2         | 305                       | 6                     | 130             | 157               | 12.5                   | 40                          | 209                               | 3000x1100x1700                          | 3000                       |
| BC-320        | 320                      | 2206C-E13TAG3         | 349                       | 6                     | 130             | 157               | 12.5                   | 40                          | 209                               | 3100x1100x1750                          | 3200                       |
| BC-360        | 360                      | 2506C-E15TAG1         | 434                       | 6                     | 137             | 171               | 15.2                   | 62                          | 209                               | 3200x1250x1800                          | 3800                       |
| BC-400        | 400                      | 2506C-E15TAG2         | 435                       | 6                     | 137             | 171               | 15.2                   | 62                          | 206                               | 3400x1300x1800                          | 4200                       |
| BC-470        | 470                      | 2806C-E18TAG1A        | 514                       | 6                     | 145             | 183               | 18.1                   | 62                          | 206                               | 3400x1300x1800                          | 1200                       |
| BC-440        | 440                      | 2806J-E18TAG1         | 530                       | 6                     | 145             | 183               | 18.1                   | 67                          | 206                               | 3500x1300x2000                          | 4500                       |
| BC-520        | 520                      | 2806A-E18TAG2         | 565                       | 6                     | 145             | 183               | 18.1                   | 62                          | 206                               | 3500x1300x2000                          | 4500                       |
| BC-720        | 720                      | 4008TAG1A             | 805                       | 8                     | 160             | 190               | 30.6                   | 153                         | 203                               | 3600x1550x2000                          | 4800                       |
| BC-680        | 680                      | 4006-23TAG3A          | 759                       | 8                     | 160             | 190               | 23                     | 123                         | 209                               | 3800x1750x2200                          | 7600                       |
| BC-800        | 800                      | 4008TAG2A             | 899                       | 8                     | 160             | 190               | 30.6                   | 153                         | 205                               | 3800x1750x2200                          | 8000                       |
| BC-900        | 900                      | 4008-30TAG3           | 1105                      | 8                     | 160             | 190               | 30.6                   | 153                         | 209                               | 4500x2000x2300                          | 10000                      |
| BC-1500       | 1500                     | 4016TAG1A             | 1588                      | 16                    | 160             | 190               | 61.1                   | 237.2                       | 209                               | 5200x2100x2500                          | 15000                      |
| BC-1600       | 1600                     | 4016TAG2A             | 1766                      | 16                    | 160             | 190               | 61.1                   | 237.2                       | 209                               | 5500x2300x2500                          | 15500                      |



沃尔沃二排放系列发电机组技术参数  
Technical Parameters for Volvo T2 Series

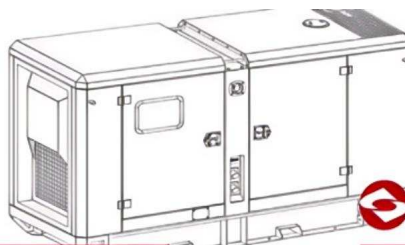
| 机组型号<br>Model | 机组功率<br>Prime Power (KW) | 柴油机型号<br>Engine Model | 柴油功率<br>Engine Power (KW) | 缸数<br>No. of Cylinder | 缸径<br>Bore (mm) | 行程<br>Stroke (mm) | 排量<br>Displacement (L) | 压缩比<br>Compression Ratio | 机油容量<br>Lubrication Oil (L) | 燃油消耗<br>Fuel Consumption (g/kw.h) | 机组尺寸(MM)<br>Genset Dimensions L x W x H | 机组重量<br>Genset Weight (KG) |
|---------------|--------------------------|-----------------------|---------------------------|-----------------------|-----------------|-------------------|------------------------|--------------------------|-----------------------------|-----------------------------------|---|----------------------------|
| BC-75         | 75                       | TAD530GE              | 85                        | 4                     | 108             | 130               | 4.76                   | 17.5:1                   | 13                          | 213                               | 2200x720x1380                           | 1050                       |
| BC-90         | 90                       | TAD531GE              | 102                       | 4                     | 108             | 130               | 4.76                   | 18:1                     | 13                          | 218                               | 2200x720x1380                           | 1150                       |
| BC-110        | 110                      | TAD532GE              | 129                       | 4                     | 108             | 130               | 4.76                   | 17.5:1                   | 13                          | 214                               | 2520x750x1400                           | 1450                       |
| BC-130        | 130                      | TAD731GE              | 153                       | 6                     | 108             | 130               | 7.15                   | 17.5:1                   | 13                          | 215                               | 2500x800x1350                           | 1500                       |
| BC-160        | 160                      | TAD732GE              | 183                       | 6                     | 108             | 130               | 7.15                   | 18:1                     | 34                          | 213                               | 2500x800x1600                           | 1550                       |
| BC-180        | 180                      | TAD733GE              | 201                       | 6                     | 108             | 130               | 7.15                   | 18:1                     | 34                          | 205                               | 2550x750x1650                           | 1650                       |
| BC-220        | 220                      | TAD734GE              | 250                       | 6                     | 108             | 130               | 7.15                   | 17:1                     | 29                          | 204                               | 2550x750x1650                           | 1650                       |
| BC-250        | 250                      | TAD1341GE-B           | 315                       | 6                     | 131             | 150               | 12.13                  | 17.5:1                   | 35                          | 198                               | 3000x1120x1600                          | 2700                       |
| BC-300        | 300                      | TAD1342GE-B           | 352                       | 6                     | 131             | 150               | 12.13                  | 17.5:1                   | 35                          | 198                               | 3000x1120x1600                          | 2700                       |
| BC-320        | 320                      | TAD1343GE-B           | 363                       | 6                     | 131             | 150               | 12.13                  | 17.5:1                   | 35                          | 198                               | 3000x1120x1600                          | 2800                       |
| BC-350        | 350                      | TAD1344GE-B           | 398                       | 6                     | 131             | 150               | 12.13                  | 17.5:1                   | 35                          | 198                               | 3000x1120x1600                          | 2800                       |
| BC-390        | 390                      | TAD1345GE-B           | 441                       | 6                     | 144             | 165               | 16.12                  | 17.5:1                   | 64                          | 198                               | 3300x1200x1850                          | 3000                       |
| BC-400        | 400                      | TAD1640GE-B           | 451                       | 6                     | 144             | 165               | 16.12                  | 17.5:1                   | 48                          | 194                               | 3300x1100x1970                          | 3000                       |
| BC-430        | 430                      | TAD1641GE-B           | 484                       | 6                     | 144             | 165               | 16.12                  | 16.5:1                   | 48                          | 198                               | 3300x1100x1970                          | 3100                       |
| BC-500        | 500                      | TAD1642GE-B           | 547                       | 6                     | 144             | 165               | 16.12                  | 16.5:1                   | 48                          | 200                               | 3350x1150x1970                          | 3500                       |
| BC-550        | 550                      | TWD1644GE             | 610                       | 6                     | 144             | 165               | 16.12                  | 16.5:1                   | 50                          | 200                               | 3350x1150x1970                          | 3600                       |



沃尔沃三排放系列发电机组技术参数  
Technical Parameters for Volvo T3 Series

| 机组型号<br>Model | 机组功率<br>Prime Power (KW) | 柴油机型号<br>Engine Model | 柴油功率<br>Engine Power (KW) | 缸数<br>No. of Cylinder | 缸径<br>Bore (mm) | 行程<br>Stroke (mm) | 排量<br>Displacement (L) | 压缩比<br>Compression Ratio | 机油容量<br>Lubrication Oil (L) | 燃油消耗<br>Fuel Consumption (g/kw.h) | 机组尺寸(MM)<br>Genset Dimensions L x W x H | 机组重量<br>Genset Weight (KG) |
|---------------|--------------------------|-----------------------|---------------------------|-----------------------|-----------------|-------------------|------------------------|--------------------------|-----------------------------|-----------------------------------|---|----------------------------|
| BC-70         | 70                       | TAD550GE              | 85                        | 4                     | 108             | 130               | 4.76                   | 18:01                    | 13                          | 213                               | 2200x720x1380                           | 1050                       |
| BC-80         | 80                       | TAD551GE              | 102                       | 4                     | 108             | 130               | 4.76                   | 18:01                    | 20                          | 220                               | 2200x720x1380                           | 1150                       |
| BC-100        | 100                      | TAD750GE              | 129                       | 4                     | 108             | 130               | 4.76                   | 18:01                    | 20                          | 214                               | 2520x750x1400                           | 1450                       |
| BC-120        | 120                      | TAD751GE              | 153                       | 6                     | 108             | 130               | 7.15                   | 18:01                    | 20                          | 215                               | 2500x800x1350                           | 1500                       |
| BC-150        | 150                      | TAD752GE              | 183                       | 6                     | 108             | 130               | 7.15                   | 18:01                    | 34                          | 213                               | 2500x800x1600                           | 1550                       |
| BC-160        | 160                      | TAD753GE              | 201                       | 6                     | 108             | 130               | 7.15                   | 18:01                    | 34                          | 216                               | 2550x750x1650                           | 1650                       |
| BC-200        | 200                      | TAD754GE              | 250                       | 6                     | 108             | 130               | 7.15                   | 18:01                    | 34                          | 204                               | 2550x750x1650                           | 1650                       |
| BC-260        | 260                      | TAD1351GE             | 315                       | 6                     | 131             | 158               | 12.78                  | 18.1:1                   | 36                          | 206                               | 3000x1120x1600                          | 2700                       |
| BC-290        | 290                      | TAD1352GE             | 352                       | 6                     | 131             | 158               | 12.78                  | 18.1:1                   | 36                          | 202                               | 3000x1120x1600                          | 2800                       |
| BC-300        | 300                      | TAD1354GE             | 363                       | 6                     | 131             | 158               | 12.78                  | 18.1:1                   | 36                          | 192                               | 3300x1200x1850                          | 3000                       |
| BC-330        | 330                      | TAD1355GE             | 398                       | 6                     | 131             | 158               | 12.78                  | 18.1:1                   | 36                          | 194                               | 3300x1100x1970                          | 3000                       |
| BC-370        | 270                      | TAD1650GE             | 441                       | 6                     | 144             | 165               | 12.78                  | 18.1:1                   | 48                          | 196                               | 3300x1100x1970                          | 3100                       |
| BC-400        | 400                      | TAD1651GE             | 484                       | 6                     | 144             | 165               | 16.12                  | 16.5:1                   | 48                          | 199                               | 3350x1150x1970                          | 3500                       |
| BC-480        | 480                      | TWD1652GE             | 547                       | 6                     | 144             | 165               | 16.12                  | 16.5:1                   | 48                          | 201                               | 3350x1150x1970                          | 3600                       |
| BC-520        | 520                      | TWD1653GE             | 613                       | 6                     | 144             | 165               | 16.12                  | 16.5:1                   | 48                          | 210                               | 3350x1150x1970                          | 3600                       |

**上柴国二排放系列发电机组技术参数**  
 Technical Parameters for Shangchai T2 Series

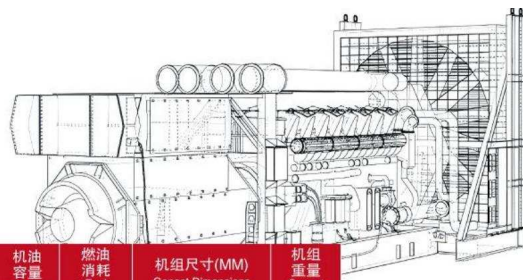


**上柴国三排放系列发电机组技术参数**  
 Technical Parameters for Shangchai T3 Series

| 机组型号<br>Model | 机组功率<br>Prime Power<br>(KW) | 柴油机型号<br>Engine Model | 柴油功率<br>Engine Power<br>(KW) | 缸数<br>No. of<br>Cylinder | 缸径<br>Bore<br>(mm) | 行程<br>Stroke<br>(mm) | 排量<br>Displacement<br>(L) | 压缩比<br>Compression<br>Ratio | 机油容量<br>Lubrication<br>Oil (L) | 燃油消耗<br>Fuel<br>Consumption<br>(g/kw.h) | 机组尺寸(MM)<br>Genest Dimensions<br>L x W x H | 机组重量<br>Genest<br>Weight<br>(KG) |
|---------------|-----------------------------|-----------------------|------------------------------|--------------------------|--------------------|----------------------|---------------------------|-----------------------------|--------------------------------|---|--|----------------------------------|
| BC-50         | 50                          | SC4H95D2              | 68                           | 4                        | 105                | 124                  | 4.3                       | 17.3:1                      | 15                             | <204                                    | 2160x850x1200                              | 850                              |
| BC-70         | 70                          | SC4H115D2             | 86                           | 4                        | 105                | 124                  | 4.3                       | 17.3:1                      | 15                             | <204                                    | 2160x850x1200                              | 900                              |
| BC-90         | 90                          | SC4H140D2             | 105                          | 4                        | 105                | 124                  | 4.3                       | 17.3:1                      | 15                             | <204                                    | 2160x850x1200                              | 1000                             |
| BC-100        | 100                         | SC4H160D2             | 116                          | 4                        | 105                | 124                  | 4.3                       | 17.3:1                      | 15                             | <204                                    | 2160x850x1200                              | 1000                             |
| BC-100        | 100                         | SC4H180D2             | 132                          | 4                        | 105                | 124                  | 4.3                       | 16:1                        | 15                             | <204                                    | 2160x850x1200                              | 1000                             |
| BC-110        | 110                         | SC7H180D2             | 132                          | 6                        | 105                | 124                  | 6.5                       | 16:1                        | 17.5                           | <195                                    | 2450x970x1350                              | 1300                             |
| BC-130        | 130                         | SC7H205D2             | 152                          | 6                        | 105                | 124                  | 6.5                       | 16:1                        | 17.5                           | <195                                    | 2450x970x1350                              | 1300                             |
| BC-145        | 145                         | SC7H220D2             | 165                          | 6                        | 105                | 124                  | 6.5                       | 16:1                        | 17.5                           | <195                                    | 2450x970x1350                              | 1300                             |
| BC-150        | 150                         | SC7H230D2             | 170                          | 6                        | 105                | 124                  | 6.5                       | 16:1                        | 17.5                           | <195                                    | 2450x970x1350                              | 1300                             |
| BC-165        | 165                         | SC7H250D2             | 185                          | 6                        | 105                | 124                  | 6.5                       | 16:1                        | 17.5                           | <195                                    | 2450x970x1350                              | 1300                             |
| BC-180        | 180                         | SC8D260D2             | 204                          | 6                        | 114                | 135                  | 8.3                       | 18:1                        | 19                             | <200                                    | 2500x1050x1440                             | 1600                             |
| BC-200        | 200                         | SC9D310D2             | 228                          | 6                        | 114                | 144                  | 8.9                       | 18:1                        | 19                             | <200                                    | 2500x1050x1440                             | 1600                             |
| BC-220        | 220                         | SC9D340D2             | 255                          | 6                        | 114                | 144                  | 8.9                       | 16.5:1                      | 19                             | <198                                    | 2500x1050x1440                             | 1600                             |
| BC-250        | 250                         | SC10E380D2            | 280                          | 6                        | 128                | 135                  | 10.4                      | 17:1                        | 36                             | <192                                    | 3065x1105x1626                             | 1800                             |
| BC-260        | 260                         | SC10E400D2            | 295                          | 6                        | 128                | 135                  | 10.4                      | 17:1                        | 36                             | <192                                    | 3065x1105x1626                             | 1800                             |
| BC-280        | 280                         | SC12E420D2            | 308                          | 6                        | 128                | 153                  | 11.8                      | 17:1                        | 36                             | <192                                    | 3065x1105x1626                             | 1800                             |
| BC-280        | 280                         | SC13G420D2            | 308                          | 6                        | 135                | 150                  | 12.88                     | 15.75:1                     | 41                             | <205                                    | 2920x1250x1630                             | 2600                             |
| BC-300        | 300                         | SC12E460D2            | 338                          | 6                        | 128                | 153                  | 11.8                      | 17:1                        | 36                             | <192                                    | 3065x1105x1626                             | 1800                             |
| BC-320        | 320                         | SC12E480D2            | 355                          | 6                        | 128                | 153                  | 11.8                      | 17:1                        | 36                             | <192                                    | 3065x1105x1626                             | 1800                             |
| BC-330        | 330                         | SC13E500D2            | 373                          | 6                        | 130                | 161                  | 12.8                      | 17:1                        | 36                             | <205                                    | 2920x1250x1630                             | 2600                             |
| BC-330        | 330                         | SC15G500D2            | 373                          | 6                        | 135                | 165                  | 14.2                      | 15.55:1                     | 41                             | <205                                    | 2920x1250x1630                             | 2600                             |
| BC-360        | 360                         | SC13E550D2            | 405                          | 6                        | 130                | 161                  | 12.8                      | 17:1                        | 36                             | <205                                    | 2920x1250x1630                             | 2600                             |
| BC-400        | 400                         | SC25G610D2            | 445.5                        | 12                       | 135                | 150                  | 25.8                      | 16:1                        | 48                             | <205                                    | 3450x1500x2200                             | 4200                             |
| BC-450        | 450                         | SC25G690D2            | 505                          | 12                       | 135                | 150                  | 25.8                      | 16:1                        | 65                             | <205                                    | 3450x1500x2200                             | 4200                             |
| BC-500        | 500                         | SG27G755D2            | 560                          | 12                       | 135                | 155                  | 26.6                      | 16:1                        | 65                             | <205                                    | 3500x1550x2070                             | 4200                             |
| BC-550        | 550                         | SC27G830D2            | 610                          | 12                       | 135                | 155                  | 26.6                      | 16:1                        | 65                             | <205                                    | 3550x1440x2200                             | 4600                             |
| BC-600        | 600                         | SC27G900D2            | 662                          | 12                       | 135                | 155                  | 26.6                      | 16:1                        | 65                             | <205                                    | 3550x1440x2200                             | 4600                             |
| BC-660        | 660                         | SC33W990D2            | 726                          | 6                        | 180                | 215                  | 32.8                      | 15:1                        | 100                            | <205                                    | 4200x1590x2100                             | 6500                             |
| BC-780        | 780                         | SC33W1150D2           | 860                          | 6                        | 180                | 215                  | 32.8                      | 15:1                        | 100                            | <205                                    | 4200x1590x2100                             | 6500                             |

| 机组型号<br>Model | 机组功率<br>Prime Power<br>(KW) | 柴油机型号<br>Engine Model | 柴油功率<br>Engine Power<br>(KW) | 缸数<br>No. of<br>Cylinder | 缸径<br>Bore<br>(mm) | 行程<br>Stroke<br>(mm) | 排量<br>Displacement<br>(L) | 压缩比<br>Compression<br>Ratio | 机油容量<br>Lubrication<br>Oil (L) | 燃油消耗<br>Fuel<br>consumption<br>(g/kw.h) | 机组尺寸(MM)<br>Genest Dimensions<br>L x W x H | 机组重量<br>Genest<br>Weight<br>(KG) |
|---------------|-----------------------------|-----------------------|------------------------------|--------------------------|--------------------|----------------------|---------------------------|-----------------------------|--------------------------------|---|--|----------------------------------|
| BC-45         | 45                          | 4HTAA4.3-G31          | 56                           | 4                        | 105                | 124                  | 4.3                       | 16:1                        | 15                             | 192                                     | 1600*600*1200                              | 800                              |
| BC-55         | 55                          | 4HTAA4.3-G32          | 68                           | 4                        | 105                | 124                  | 4.3                       | 16:1                        | 15                             | 192                                     | 1600*600*1200                              | 800                              |
| BC-70         | 70                          | 4HTAA4.3-G33          | 86                           | 4                        | 105                | 124                  | 4.3                       | 16:1                        | 15                             | 192                                     | 1800*600*1200                              | 1000                             |
| BC-90         | 90                          | 4HTAA4.3-G34          | 105                          | 4                        | 105                | 124                  | 4.3                       | 16:1                        | 15                             | 192                                     | 1800*600*1200                              | 1000                             |
| BC-100        | 100                         | 4HTAA4.3-G35          | 117                          | 4                        | 105                | 124                  | 4.3                       | 16:1                        | 15                             | 192                                     | 1800*600*1200                              | 1100                             |
| BC-120        | 120                         | 4HTAA4.3-G36          | 140                          | 4                        | 105                | 124                  | 4.3                       | 16:1                        | 15                             | 192                                     | 1800*600*1200                              | 1100                             |
| BC-120        | 120                         | 6HTAA6.5-G31          | 141                          | 6                        | 105                | 124                  | 6.5                       | 16:1                        | 17.5                           | 195                                     | 2200*750*1450                              | 1400                             |
| BC-130        | 130                         | 6HTAA6.5-G32          | 155                          | 6                        | 105                | 124                  | 6.5                       | 16:1                        | 17.5                           | 195                                     | 2200*750*1450                              | 1400                             |
| BC-150        | 150                         | 6HTAA6.5-G35          | 170                          | 6                        | 105                | 124                  | 6.5                       | 16:1                        | 17.5                           | 195                                     | 2600*800*1650                              | 1800                             |
| BC-165        | 165                         | 6HTAA6.5-G33          | 185                          | 6                        | 105                | 124                  | 6.5                       | 16:1                        | 17.5                           | 195                                     | 2600*800*1650                              | 1800                             |
| BC-180        | 180                         | 6HTAA6.5-G34          | 205                          | 6                        | 105                | 124                  | 6.5                       | 16:1                        | 17.5                           | 195                                     | 2600*800*1650                              | 1800                             |
| BC-180        | 180                         | 6DTAA8.9-G31          | 204                          | 6                        | 114                | 144                  | 8.82                      | 18:1                        | 19                             | 192                                     | 2800*800*1650                              | 2000                             |
| BC-200        | 200                         | 6DTAA8.9-G32          | 228                          | 6                        | 114                | 144                  | 8.82                      | 18:1                        | 19                             | 192                                     | 2800*800*1650                              | 2200                             |
| BC-220        | 220                         | 6DTAA8.9-G33          | 253                          | 6                        | 114                | 144                  | 8.82                      | 16.5:1                      | 25                             | 192                                     | 2800*800*1650                              | 2200                             |
| BC-250        | 250                         | 6DTAA8.9-G34          | 280                          | 6                        | 114                | 144                  | 8.82                      | 16.5:1                      | 25                             | 192                                     | 2800*800*1650                              | 2300                             |
| BC-280        | 280                         | 6ETAA11.8-G32         | 308                          | 6                        | 128                | 153                  | 11.82                     | 17:1                        | 41                             | 190                                     | 3100*1150*1750                             | 2650                             |
| BC-300        | 300                         | 6ETAA11.8-G33         | 338                          | 6                        | 128                | 153                  | 11.82                     | 17:1                        | 41                             | 190                                     | 3100*1150*1750                             | 2850                             |
| BC-330        | 330                         | 6ETAA11.8-G31         | 380                          | 6                        | 128                | 153                  | 11.82                     | 17:1                        | 41                             | 190                                     | 3100*1150*1750                             | 2850                             |
| BC-360        | 360                         | 6ETAA12.8-G32         | 400                          | 6                        | 130                | 161                  | 12.82                     | 17:1                        | 41                             | 190                                     | 3200*1150*1900                             | 3500                             |
| BC-400        | 400                         | 6ETAA12.8-G31         | 441                          | 6                        | 130                | 161                  | 12.82                     | 17:1                        | 41                             | 190                                     | 3200*1150*1900                             | 3800                             |
| BC-440        | 440                         | 6ETAA12.8-G310        | 495                          | 6                        | 130                | 161                  | 12.82                     | 17:1                        | 41                             | 190                                     | 3200*1150*1900                             | 3800                             |
| BC-450        | 450                         | 12GTA27-G34           | 505                          | 12                       | 135                | 155                  | 26.6                      | 16:1                        | 65                             | 202                                     | 3600*1400*2000                             | 4350                             |
| BC-500        | 500                         | 12GTA27-G33           | 555                          | 12                       | 170                | 185                  | 26.6                      | 17:1                        | 75                             | 202                                     | 3600*1400*2000                             | 4500                             |
| BC-550        | 550                         | 12GTA27-G32           | 622                          | 12                       | 170                | 185                  | 26.6                      | 17:1                        | 75                             | 202                                     | 3600*1400*2000                             | 4600                             |
| BC-620        | 620                         | 12GTA27-G31           | 684                          | 12                       | 135                | 155                  | 26.6                      | 16:1                        | 65                             | 202                                     | 3800*1400*2000                             | 5000                             |
| BC-450        | 450                         | 6KTA25-G311           | 506                          | 6                        | 170                | 185                  | 26.6                      | 14.5:1                      | 75                             | 202                                     | 3800*1400*2000                             | 5000                             |
| BC-500        | 500                         | 6KTA25-G310           | 572                          | 6                        | 170                | 185                  | 25.2                      | 16:1                        | 75                             | 197                                     | 3800*1400*2000                             | 5000                             |
| BC-550        | 550                         | 6KTA25-G39            | 629                          | 6                        | 135                | 155                  | 25.2                      | 16:1                        | 65                             | 197                                     | 4350*1650*2100                             | 4850                             |
| BC-600        | 600                         | 6KTA25-G38            | 684                          | 6                        | 170                | 185                  | 25.2                      | 17:1                        | 75                             | 200                                     | 4350*1650*2100                             | 4900                             |
| BC-450        | 450                         | 6KTA25-G311           | 506                          | 6                        | 170                | 185                  | 25.2                      | 16:1                        | 75                             | 200                                     | 4350*1650*2100                             | 4900                             |
| BC-450        | 450                         | 6KTA25-G36            | 506                          | 6                        | 135                | 155                  | 25.2                      | 16:1                        | 65                             | 200                                     | 4350*1650*2100                             | 4900                             |
| BC-500        | 500                         | 6KTA25-G310           | 572                          | 6                        | 170                | 185                  | 25.2                      | 16:1                        | 75                             | 200                                     | 4350*1650*2100                             | 4900                             |
| BC-500        | 500                         | 6KTA25-G35            | 572                          | 6                        | 170                | 185                  | 25.2                      | 16:1                        | 75                             | 200                                     | 4350*1650*2100                             | 4900                             |
| BC-550        | 550                         | 6KTA25-G34            | 629                          | 6                        | 170                | 185                  | 25.2                      | 14.5:1                      | 75                             | 200                                     | 4350*1650*2100                             | 4900                             |
| BC-580        | 580                         | 6KTA25-G37            | 672                          | 6                        | 170                | 185                  | 25.2                      | 14.5:1                      | 75                             | 200                                     | 4350*1650*2100                             | 4900                             |
| BC-600        | 600                         | 6KTA25-G38            | 684                          | 6                        | 186                | 215                  | 25.2                      | 14.5:1                      | 100                            | 200                                     | 4350*1650*2100                             | 4900                             |
| BC-600        | 600                         | 6KTA25-G33            | 684                          | 6                        | 170                | 185                  | 25.2                      | 14.5:1                      | 75                             | 200                                     | 4350*1650*2100                             | 4850                             |
| BC-660        | 660                         | 6KTA25-G32            | 754                          | 6                        | 186                | 215                  | 25.2                      | 14.5:1                      | 100                            | 206                                     | 3900*1400*2100                             | 4900                             |
| BC-720        | 720                         | 6KTA25-G31            | 800                          | 6                        | 186                | 215                  | 25.2                      | 14.5:1                      | 100                            | 206                                     | 3900*1400*2100                             | 5000                             |
| BC-800        | 800                         | 6KTA35-G320           | 902                          | 6                        | 166                | 215                  | 25.2                      | 14.5:1                      | 100                            | 206                                     | 4500*2000*2500                             | 6500                             |
| BC-800        | 800                         | 6WTA35-G32            | 900                          | 6                        | 186                | 215                  | 35.1                      | 14.5:1                      | 100                            | 216                                     | 4500*2000*2500                             | 6500                             |
| BC-800        | 800                         | 6KTA25-G320           | 902                          | 6                        | 170                | 210                  | 25.2                      | 14.5:1                      | 100                            | 216                                     | 4500*2000*2500                             | 6500                             |
| BC-880        | 880                         | 6KTA25-G321           | 968                          | 6                        | 170                | 210                  | 25.2                      | 14.5:1                      | 100                            | 216                                     | 4500*2000*2500                             | 6500                             |
| BC-880        | 880                         | 6WTA35-G31            | 970                          | 6                        | 170                | 210                  | 35.1                      | 14.5:1                      | 100                            | 216                                     | 4500*2000*2500                             | 6500                             |
| BC-1000       | 1000                        | 6WTA35-G310           | 1120                         | 6                        | 170                | 210                  | 35.1                      | 14.5:1                      | 100                            | 216                                     | 4500*2000*2500                             | 6800                             |
| BC-1100       | 1100                        | 6WTA35-G311           | 1230                         | 6                        | 170                | 210                  | 35.1                      | 14.5:1                      | 100                            | 216                                     | 4500*2000*2500                             | 6960                             |
| BC-1200       | 1200                        | 12KTA58-G36           | 1410                         | 12                       | 170                | 210                  | 57.2                      | 14.5:1                      | 100                            | 200                                     | 5200*2250*2850                             | 9800                             |
| BC-1350       | 1350                        | 12KTA58-G35           | 1560                         | 12                       | 170                | 210                  | 57.2                      | 14.5:1                      | 100                            | 200                                     | 5200*2250*2850                             | 11850                            |
| BC-1500       | 1500                        | 12KTA58-G34           | 1720                         | 12                       | 170                | 210                  | 57.2                      | 14.5:1                      | 100                            | 200                                     | 5200*2250*2850                             | 12500                            |
| BC-1650       | 1650                        | 12KTA58-G33           | 1890                         | 12                       | 170                | 210                  | 57.2                      | 14.5:1                      | 100                            | 200                                     | 5200*2250*2850                             | 13800                            |
| BC-1800       | 1800                        | 12KTA58-G32           | 2035                         | 12                       | 170                | 210                  | 57.2                      | 14.5:1                      | 100                            | 200                                     | 5200*2250*2850                             | 14200                            |
| BC-2000       | 2000                        | 12KTA58-G31           | 2210                         | 12                       | 170                | 210                  | 57.2                      | 14.5:1                      | 100                            | 200                                     | 5200*2250*2850                             | 15300                            |

**潍柴国二排放系列发电机组技术参数**  
Technical Parameters for Weichai T2 Series



| 机组型号<br>Model | 机组功率<br>Prime Power (KW) | 柴油机型号<br>Engine Model | 柴油功率<br>Engine Power (KW) | 缸数<br>No. of Cylinder | 缸径<br>Bore (mm) | 行程<br>Stroke (mm) | 排量<br>Displacement (L) | 机油容量<br>Lubrication Oil (L) | 燃油消耗<br>Fuel Consumption (g/kw.h) | 机组尺寸(MM)<br>Genset Dimensions L x W x H | 机组重量<br>Genset Weight (KG) |
|---------------|--------------------------|-----------------------|---------------------------|-----------------------|-----------------|-------------------|------------------------|-----------------------------|-----------------------------------|---|----------------------------|
| BC-20         | 20                       | WP2.3D25E200          | 25                        | 4                     | 89              | 92                | 2.289                  | 18                          | 195                               | 1650x650x1250                           | 500                        |
| BC-30         | 30                       | WP2.3D33E200          | 33                        | 4                     | 89              | 92                | 2.289                  | 18                          | 195                               | 1600x750x1450                           | 600                        |
| BC-35         | 35                       | WP2.3D40E200          | 40                        | 4                     | 89              | 92                | 2.289                  | 18                          | 195                               | 1600x750x1450                           | 600                        |
| BC-40         | 40                       | WP2.3D48E200          | 48.4                      | 4                     | 89              | 92                | 2.289                  | 18                          | 195                               | 1600x750x1450                           | 600                        |
| BC-60         | 60                       | WP4.1D66E200          | 66                        | 4                     | 105             | 118               | 4.087                  | 22                          | 195                               | 1600x750x1450                           | 650                        |
| BC-70         | 70                       | WP4.1D80E200          | 80                        | 4                     | 105             | 118               | 4.087                  | 22                          | 195                               | 1950x750x1450                           | 700                        |
| BC-100        | 100                      | WP4.1D113E200         | 113                       | 4                     | 105             | 118               | 4.087                  | 22                          | 195                               | 2050x900x1150                           | 850                        |
| BC-120        | 120                      | WP6D132E200           | 132                       | 6                     | 105             | 130               | 6.75                   | 40                          | 205                               | 2450x850x1300                           | 900                        |
| BC-130        | 130                      | WP6D152E200           | 152                       | 6                     | 105             | 130               | 6.75                   | 40                          | 205                               | 2400x1000x1300                          | 1200                       |
| BC-150        | 150                      | WP6D167E200           | 167                       | 6                     | 105             | 130               | 6.75                   | 40                          | 205                               | 2400x1000x1300                          | 1200                       |
| BC-180        | 180                      | WP10D200E200          | 200                       | 6                     | 126             | 130               | 9.726                  | 43                          | 195                               | 2700x1040x1400                          | 2300                       |
| BC-200        | 200                      | WP10D238E200          | 236                       | 6                     | 126             | 130               | 9.726                  | 43                          | 195                               | 2700x1040x1400                          | 2300                       |
| BC-220        | 220                      | WP10D264E200          | 264                       | 6                     | 126             | 130               | 9.726                  | 43                          | 195                               | 2800x1050x1750                          | 3050                       |
| BC-280        | 280                      | WP10D320E200          | 320                       | 6                     | 126             | 130               | 9.726                  | 43                          | 195                               | 3030x1050x1750                          | 3050                       |
| BC-320        | 320                      | WP12D353E200          | 353                       | 6                     | 126             | 155               | 11.596                 | 48                          | 195                               | 3050x1200x1900                          | 3300                       |
| BC-350        | 350                      | WP13D385E200          | 385                       | 6                     | 127             | 165               | 12.54                  | 48                          | 195                               | 3100x1200x1900                          | 3600                       |
| BC-360        | 360                      | WP13D405E200          | 405                       | 6                     | 127             | 165               | 12.54                  | 48                          | 195                               | 3100x1200x1900                          | 3600                       |
| BC-500        | 500                      | 6M33D572E200          | 572                       | 6                     | 150             | 185               | 19.6                   | 83                          | 210                               | 3500x1350x1950                          | 3350                       |
| BC-550        | 550                      | 6M33D633E200          | 633                       | 6                     | 150             | 185               | 19.6                   | 83                          | 195                               | 3500x1350x1950                          | 3350                       |
| BC-600        | 600                      | 6M33D670E200          | 670                       | 6                     | 150             | 185               | 19.6                   | 83                          | 195                               | 3600x1500x1950                          | 3350                       |
| BC-720        | 720                      | 6M33D800E200          | 800                       | 8                     | 150             | 185               | 26.14                  | 105                         | 210                               | 3600x1500x1950                          | 3350                       |
| BC-800        | 800                      | 8M33D890E200          | 890                       | 8                     | 150             | 185               | 26.14                  | 105                         | 210                               | 3600x1500x1950                          | 3350                       |
| BC-700        | 700                      | 12M26D792E200         | 792                       | 12                    | 150             | 150               | 31.8                   | 113                         | 210                               | 4600x1740x2340                          | 7450                       |
| BC-750        | 750                      | 12M26D902E200         | 902                       | 12                    | 150             | 150               | 31.8                   | 113                         | 210                               | 4600x1750x2340                          | 7500                       |
| BC-880        | 880                      | 12M26D968E200         | 968                       | 12                    | 150             | 150               | 31.8                   | 132                         | 210                               | 4700x1850x2340                          | 7950                       |
| BC-1000       | 1000                     | 12M33D1108E200        | 1108                      | 12                    | 150             | 185               | 39.2                   | 146                         | 210                               | 4700x1850x2340                          | 7950                       |
| BC-1100       | 1100                     | 12M33D1210E200        | 1210                      | 12                    | 150             | 185               | 39.2                   | 146                         | 210                               | 4700x1850x2340                          | 7950                       |
| BC-1200       | 1200                     | 12M33D1320E200        | 1320                      | 12                    | 150             | 185               | 39.2                   | 146                         | 210                               | 4700x1850x2340                          | 7950                       |

**潍柴国三排放系列发电机组技术参数**  
Technical Parameters for Weichai T3 Series

| 机组型号<br>Model | 机组功率<br>Prime Power (KW) | 柴油机型号<br>Engine Model | 柴油功率<br>Engine Power (KW) | 缸数<br>No. of Cylinder | 缸径<br>Bore (mm) | 行程<br>Stroke (mm) | 排量<br>Displacement (L) | 机油容量<br>Lubrication Oil (L) | 燃油消耗<br>Fuel Consumption (g/kw.h) | 机组尺寸(MM)<br>Genset Dimensions L x W x H | 机组重量<br>Genset Weight (KG) |
|---------------|--------------------------|-----------------------|---------------------------|-----------------------|-----------------|-------------------|------------------------|-----------------------------|-----------------------------------|---|----------------------------|
| BC-15         | 15                       | WP3.2D20E310          | 20                        | 4L                    | 98              | 105               | 3.17                   | 9                           | ≤210                              | 1350x630x950                            | 500                        |
| BC-20         | 20                       | WP3.2D28E310          | 27.5                      | 4L                    | 98              | 105               | 3.17                   | 9                           | ≤210                              | 1350x630 x950                           | 500                        |
| BC-25         | 25                       | WP3.2D36E310          | 36                        | 4L                    | 98              | 105               | 3.17                   | 9                           | ≤210                              | 1350x630 x950                           | 500                        |
| BC-30         | 30                       | WP3.2D44E310          | 44                        | 4L                    | 98              | 105               | 3.17                   | 9                           | ≤210                              | 1350x630x950                            | 500                        |
| BC-55         | 55                       | WP4.1D66E310          | 66                        | 4L                    | 105             | 118               | 4.087                  | 13                          | ≤210                              | 1900x750x950                            | 800                        |
| BC-70         | 70                       | WP4.1D84E310          | 84                        | 4L                    | 105             | 118               | 4.087                  | 13                          | ≤210                              | 1900x750x950                            | 900                        |
| BC-90         | 90                       | WP4.1D105E310         | 105                       | 4L                    | 105             | 118               | 4.087                  | 16                          | ≤210                              | 2100x950x1250                           | 950                        |
| BC-100        | 100                      | WP4.6ND120E310        | 120                       | 4L                    | 108             | 125               | 4.58                   | 16                          | ≤210                              | 2100x850x1200                           | 1050                       |
| BC-110        | 110                      | WP4.6ND138E310        | 138                       | 4L                    | 108             | 125               | 4.58                   | 16                          | ≤210                              | 2100x850x1200                           | 1050                       |
| BC-130        | 130                      | WP4.6ND148E310        | 148                       | 4L                    | 108             | 125               | 4.58                   | 16                          | ≤210                              | 2100x850x1200                           | 1200                       |
| BC-130        | 130                      | WP6D152E310           | 152                       | 6L                    | 105             | 130               | 6.75                   | 18                          | ≤205                              | 2400x1000x1300                          | 3050                       |
| BC-160        | 160                      | WP7D185E310           | 185                       | 6L                    | 108             | 136               | 7.47                   | 24                          | ≤210                              | 2800x1050x1750(                         | 3050                       |
| BC-200        | 200                      | WP7D240E310           | 240                       | 6L                    | 108             | 136               | 7.47                   | 24                          | ≤210                              | 2800x1050x1750                          | 3050                       |
| BC-220        | 220                      | WP7D264E310           | 264                       | 6L                    | 108             | 136               | 7.47                   | 24                          | ≤210                              | 2800x1050x1750                          | 3050                       |
| BC-220        | 220                      | WP10D264E350          | 264                       | 6L                    | 126             | 130               | 9.726                  | 24                          | ≤210                              | 2800x1050x1750                          | 3050                       |
| BC-300        | 300                      | WP10D320E350          | 320                       | 6L                    | 126             | 130               | 9.726                  | 24                          | ≤210                              | 2800x1050x1750                          | 3050                       |
| BC-350        | 350                      | WP13D385E310          | 385                       | 6L                    | 127             | 165               | 12.54                  | 30                          | ≤210                              | 2800x1050x1750                          | 3050                       |
| BC-400        | 400                      | WP13D440E310          | 440                       | 6L                    | 127             | 165               | 12.54                  | 30                          | ≤210                              | 2800x1050x1750                          | 3050                       |
| BC-440        | 440                      | WP13D490E310          | 490                       | 6L                    | 127             | 165               | 12.54                  | 30                          | ≤210                              | 2800x1050x1750                          | 3050                       |
| BC-580        | 580                      | 6M33D633E310          | 633                       | 6L                    | 150             | 185               | 19.6                   | 83                          | ≤210                              | 3500x1350x1950                          | 3600                       |
| BC-660        | 660                      | 6M33D725E310          | 725                       | 6L                    | 150             | 185               | 19.6                   | 30                          | ≤210                              | 3500x1350)x1950                         | 3600                       |
| BC-700        | 700                      | 8M33D800E310          | 800                       | 8L                    | 150             | 185               | 26.14                  | 105                         | ≤210                              | 3500x1350 x1950                         | 3600                       |
| BC-800        | 800                      | 8M33D895E310          | 895                       | 8L                    | 150             | 185               | 26.14                  | 105                         | ≤210                              | 3500x1350 x1950                         | 3600                       |
| BC-880        | 880                      | 8M33D975E310          | 975                       | 8L                    | 150             | 185               | 26.14                  | 105                         | ≤210                              | 3500x1350 x1950                         | 3600                       |
| BC-800        | 800                      | 12M33D902E310         | 902                       | 12V                   | 150             | 185               | 39.2                   | 146                         | ≤210                              | 4600x1700x2300                          | 7300                       |
| BC-900        | 900                      | 12M33D968E310         | 968                       | 12V                   | 150             | 185               | 39.2                   | 146                         | ≤210                              | 4600x1700x2300                          | 7300                       |
| BC-1000       | 1000                     | 12M33D1108E310        | 1108                      | 12V                   | 150             | 185               | 39.2                   | 146                         | ≤210                              | 4700x1850x2340                          | 7950                       |
| BC-1100       | 1100                     | 12M33D1240E310        | 1240                      | 12V                   | 150             | 185               | 39.2                   | 146                         | ≤210                              | 4700x1850x2340                          | 7950                       |
| BC-1200       | 1200                     | 12M33D1320E310        | 1320                      | 12V                   | 150             | 185               | 39.2                   | 146                         | ≤210                              | 4700x1850x2340                          | 7950                       |
| BC-1300       | 1300                     | 12M33D1500E310        | 1500                      | 12V                   | 150             | 185               | 39.2                   | 146                         | ≤210                              | 4700x1850x2340                          | 7950                       |
| BC-1400       | 1400                     | 16M33D1530E310        | 1530                      | 16V                   | 150             | 185               | 52.3                   | 171                         | ≤210                              | 6000x2400x3000                          | 12000                      |
| BC-1450       | 1450                     | 16M33D1580E310        | 1580                      | 16V                   | 150             | 185               | 52.3                   | 171                         | ≤210                              | 7350x2670x3000                          | 19200                      |
| BC-1500       | 1500                     | 16M33D1680E310        | 1680                      | 16V                   | 150             | 185               | 52.3                   | 171                         | ≤210                              | 7350x2670x3000                          | 19200                      |
| BC-1650       | 1650                     | 16M33D1800E310        | 1800                      | 16V                   | 150             | 185               | 52.3                   | 171                         | ≤210                              | 7350x2670x3000                          | 19200                      |
| BC-1800       | 1800                     | 16M33D1980E310        | 1980                      | 16V                   | 150             | 185               | 52.3                   | 171                         | ≤210                              | 7350x2670x3000                          | 19200                      |
| BC-1900       | 1900                     | 20M33D2020E310        | 2020                      | 20V                   | 150             | 185               | 65.4                   | 240                         | ≤210                              | 7350x2670x3000                          | 19200                      |
| BC-2000       | 2000                     | 20M33D2210E310        | 2210                      | 20V                   | 150             | 185               | 65.4                   | 240                         | ≤210                              | 7350x2670x3000                          | 19200                      |
| BC-2000       | 2000                     | 12M55D2210E310        | 2210                      | 12V                   | 180             | 215               | 65.65                  | 380                         | ≤210                              | 7350x2670x3000                          | 19200                      |
| BC-2200       | 2200                     | 12M55D2450E310        | 2450                      | 12V                   | 180             | 215               | 65.65                  | 380                         | ≤210                              | 7350x2670x3000                          | 19200                      |
| BC-2400       | 2400                     | 12M55D2700E310        | 2700                      | 12V                   | 180             | 215               | 65.65                  | 380                         | ≤210                              | 7350x2670x3000                          | 19200                      |
| BC-2500       | 2500                     | 16M55D2750E310        | 2750                      | 16V                   | 180             | 215               | 87.5                   | 500                         | ≤210                              | 7350x2670x3000                          | 19200                      |
| BC-2600       | 2600                     | 16M55D2900E310        | 2900                      | 16V                   | 180             | 215               | 87.5                   | 500                         | ≤210                              | 7350x2670x3000                          | 19200                      |
| BC-2900       | 2900                     | 16M55D3300E310        | 3300                      | 16V                   | 180             | 215               | 87.5                   | 500                         | ≤210                              | 7350x2670x3000                          | 19200                      |
| BC-3300       | 3300                     | 16M55D3600E310        | 3600                      | 16V                   | 180             | 215               | 87.5                   | 500                         | ≤210                              | 7350x2670x3000                          | 19200                      |



### 广西玉柴船电国二排放系列发电机组技术参数

Technical Parameters for YUCHAI T2 Series



### 广西玉柴船电国三排放系列发电机组技术参数

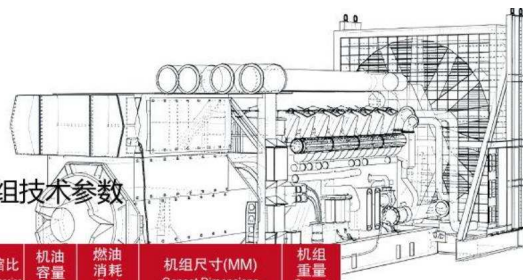
Technical Parameters for YUCHAI T3 Series

| 机组型号<br>Model | 机组功率<br>Prime Power<br>(KW) | 柴油机型号<br>Engine Model | 柴油机功率<br>Engine Power<br>(KW) | 缸数<br>No. of<br>Cylinder | 缸径<br>Bore<br>(mm) | 行程<br>Stroke<br>(mm) | 排量<br>Displacement<br>(L) | 压缩比<br>Compression<br>Ratio | 机油<br>容量<br>Lubrication<br>Oil (L) | 燃油<br>消耗<br>Fuel<br>Consumption<br>(g/kw.h) | 机组尺寸(MM)<br>Genset Dimensions<br>L x W x H | 机组<br>重量<br>Genset<br>Weight<br>(KG) |
|---------------|-----------------------------|-----------------------|-------------------------------|--------------------------|--------------------|----------------------|---------------------------|-----------------------------|------------------------------------|---|--|--------------------------------------|
| BC-20         | 20                          | YC4V35-D20            | 25                            | 4                        | 89                 | 100                  | 2.5                       | 17.5:1                      | 7                                  | ≤250  | 1560x650x950                               | 510                                  |
| BC-25         | 25                          | YC4V45Z-D20           | 33                            | 4                        | 89                 | 100                  | 2.5                       | 17.5:1                      | 7                                  | ≤240  | 1560x650x950                               | 510                                  |
| BC-30         | 30                          | YC4V55Z-D20           | 42                            | 4                        | 89                 | 100                  | 2.5                       | 17.5:1                      | 7                                  | ≤240  | 1560x650x950                               | 550                                  |
| BC-30         | 30                          | YC4D60-D25            | 44                            | 4                        | 102                | 118                  | 3.86                      | 17.5:1                      | 14                                 | ≤236  | 1850x830x1050                              | 700                                  |
| BC-55         | 55                          | YC4D90Z-D25           | 66                            | 4                        | 110                | 125                  | 4.75                      | 17.5:1                      | 16                                 | ≤235  | 1800x650x1160                              | 800                                  |
| BC-65         | 65                          | YC4A100Z-D25          | 77                            | 4                        | 110                | 125                  | 4.75                      | 17.5:1                      | 16                                 | ≤235  | 1850x760x1120                              | 900                                  |
| BC-90         | 90                          | YC4A140L-D25          | 110                           | 4                        | 110                | 125                  | 4.75                      | 17.5:1                      | 24                                 | ≤230  | 2060x830x1270                              | 1134                                 |
| BC-110        | 110                         | YC4A180L-D20          | 132                           | 4                        | 108                | 132                  | 4.84                      | 17.5:1                      | 24                                 | ≤210  | 2100x840x1300                              | 1134                                 |
| BC-110        | 120                         | YC6B180L-D20          | 132                           | 6                        | 108                | 125                  | 6.87                      | 17.5:1                      | 26                                 | ≤196  | 2350x900x1300                              | 1275                                 |
| BC-130        | 130                         | YC6B205L-D20          | 152                           | 6                        | 108                | 125                  | 6.87                      | 17.5:1                      | 28                                 | ≤196  | 2400x1070x1300                             | 1330                                 |
| BC-160        | 160                         | YC6A245L-D21          | 181                           | 6                        | 108                | 132                  | 7.255                     | 17.5:1                      | 32                                 | ≤196  | 2450x1090x1400                             | 1500                                 |
| BC-220        | 220                         | YC6MK350L-D20         | 258.5                         | 6                        | 123                | 145                  | 10.34                     | 16.8:1                      | 35                                 | ≤195  | 2900x1100x1550                             | 2000                                 |
| BC-280        | 280                         | YC6MK420L-D20         | 309                           | 6                        | 123                | 145                  | 10.34                     | 16.8:1                      | 40                                 | ≤195  | 2950x1100x1580                             | 2160                                 |
| BC-330        | 330                         | YC6MJ500L-D21         | 367                           | 6                        | 131                | 145                  | 11.73                     | 16.8:1                      | 40                                 | ≤210  | 3000x1100x1600                             | 2360                                 |
| BC-400        | 400                         | YC6T600L-D22          | 441                           | 6                        | 145                | 165                  | 16.35                     | 15:1                        | 56                                 | ≤192  | 3450x1270x1730                             | 3500                                 |
| BC-440        | 440                         | YC6T660L-D20          | 485                           | 6                        | 145                | 165                  | 16.35                     | 15:1                        | 56                                 | ≤192  | 3400x1290x1710                             | 3500                                 |

| 机组型号<br>Model | 机组功率<br>Prime Power<br>(KW) | 柴油机型号<br>Engine Model | 柴油机功率<br>Engine Power<br>(KW) | 缸数<br>No. of<br>Cylinder | 缸径<br>Bore<br>(mm) | 行程<br>Stroke<br>(mm) | 排量<br>Displacement<br>(L) | 压缩比<br>Compression<br>Ratio | 机油<br>容量<br>Lubrication<br>Oil (L) | 燃油<br>消耗<br>Fuel<br>Consumption<br>(g/kw.h) | 机组尺寸(MM)<br>Genset Dimensions<br>L x W x H | 机组<br>重量<br>Genset<br>Weight<br>(KG) |
|---------------|-----------------------------|-----------------------|-------------------------------|--------------------------|--------------------|----------------------|---------------------------|-----------------------------|------------------------------------|---|--|--------------------------------------|
| BC-20         | 20                          | YCDV254FHZ-25         | 22                            | 4                        | 89                 | 100                  | 2.5                       | 17.5:1                      | 7                                  | ≤200  | 1350x600x920                               | 520                                  |
| BC-20         | 20                          | YCDV254FHZ-35         | 27.5                          | 4                        | 89                 | 100                  | 2.5                       | 17.5:1                      | 7                                  | ≤200  | 1350x600x920                               | 550                                  |
| BC-25         | 25                          | YCDV254FHZ-40         | 33                            | 4                        | 89                 | 100                  | 2.5                       | 17.5:1                      | 7                                  | ≤200  | 1350x600x920                               | 600                                  |
| BC-30         | 30                          | YCDV254FHZ-50         | 40.5                          | 4                        | 89                 | 100                  | 2.5                       | 17.5:1                      | 7                                  | ≤200  | 1350x600x920                               | 630                                  |
| BC-40         | 40                          | YCD4V33H6-75          | 55                            | 4                        | 89                 | 100                  | 2.5                       | 17.5:1                      | 6.5                                | ≤220  | 1650x650x1100                              | 680                                  |
| BC-50         | 50                          | YC4D80-D34            | 59                            | 4                        | 102                | 118                  | 3.86                      | 17.5:1                      | 12                                 | ≤205  | 1830x750x1100                              | 850                                  |
| BC-55         | 55                          | YC4D90-D34            | 66                            | 4                        | 102                | 118                  | 3.86                      | 17.5:1                      | 12                                 | ≤205  | 1830x750x1100                              | 900                                  |
| BC-65         | 65                          | YC4D105-D34           | 77                            | 4                        | 110                | 125                  | 4.75                      | 17.5:1                      | 16                                 | ≤205  | 1880x660x970                               | 950                                  |
| BC-90         | 90                          | YC4A140-D30           | 105                           | 4                        | 108                | 132                  | 4.84                      | 16:1                        | 24                                 | ≤210  | 2100x850x1200                              | 1480                                 |
| BC-100        | 100                         | YC4A155-D30           | 113                           | 4                        | 108                | 132                  | 4.84                      | 16:1                        | 24                                 | ≤210  | 2000x850x1250                              | 1300                                 |
| BC-100        | 100                         | YC4A165-D30           | 121                           | 4                        | 108                | 132                  | 4.84                      | 16:1                        | 24                                 | ≤210  | 2000x850x1300                              | 1200                                 |
| BC-120        | 120                         | YC4A190-D30           | 138                           | 4                        | 108                | 132                  | 4.84                      | 16:1                        | 24                                 | ≤210  | 2050x750x1200                              | 1200                                 |
| BC-130        | 130                         | YCD6Q23H8-210         | 154                           | 6                        | 108                | 135                  | 7.42                      | 17.5:1                      | 26                                 | ≤205  | 2600x930x1300                              | 1800                                 |
| BC-130        | 130                         | YC6A205-D30           | 152                           | 6                        | 108                | 132                  | 7.25                      | 17.5:1                      | 32                                 | ≤200  | 2550x1150x1450                             | 1550                                 |
| BC-150        | 150                         | YC6A230-D30           | 171                           | 6                        | 108                | 132                  | 7.25                      | 17.5:1                      | 28                                 | ≤200  | 2450x1060x1400                             | 1400                                 |
| BC-160        | 160                         | YC6A245-D30           | 181                           | 6                        | 108                | 132                  | 7.25                      | 17.5:1                      | 32                                 | ≤200  | 2550x1150x1450                             | 1650                                 |
| BC-180        | 180                         | YCD6Q33H6-260         | 209                           | 6                        | 108                | 135                  | 7.42                      | 17.5:1                      | 26                                 | ≤205  | 2600x930x1300                              | 1800                                 |
| BC-180        | 180                         | YC6A275-D30           | 203                           | 6                        | 108                | 132                  | 7.25                      | 17.5:1                      | 32                                 | ≤200  | 2450x1130x1400                             | 1620                                 |
| BC-200        | 200                         | YCA08350-D30          | 259                           | 6                        | 110                | 132                  | 7.53                      | 17.5:1                      | 35                                 | ≤200  | 2700x1290x1470                             | 2200                                 |
| BC-200        | 200                         | YC6MK350-D30          | 259                           | 6                        | 123                | 145                  | 10.34                     | 16.8:1                      | 35                                 | ≤195  | 2900x1100x1550                             | 2000                                 |
| BC-280        | 280                         | YC6MK420-D30          | 309                           | 6                        | 123                | 145                  | 10.34                     | 16.8:1                      | 40                                 | ≤195  | 2950x1250x1600                             | 2300                                 |
| BC-300        | 300                         | YC6MK450-D30          | 331                           | 6                        | 123                | 145                  | 10.34                     | 16.8:1                      | 40                                 | ≤195  | 3000x1230x1570                             | 3000                                 |
| BC-320        | 320                         | YC6MJ500-D30          | 367                           | 6                        | 131                | 145                  | 11.73                     | 16.8:1                      | 40                                 | ≤203  | 3000x1100x1600                             | 2360                                 |
| BC-360        | 360                         | YC6MJ540-D30          | 402                           | 6                        | 131                | 145                  | 11.73                     | 16.8:1                      | 48                                 | ≤203  | 3100x1260x1800                             | 2500                                 |
| BC-400        | 400                         | YC6MJ600-D30          | 441                           | 6                        | 131                | 145                  | 11.73                     | 16.8:1                      | 48                                 | ≤203  | 3200x1280x1770                             | 2600                                 |
| BC-440        | 440                         | YC6MJ660-D30          | 485                           | 6                        | 131                | 145                  | 11.73                     | 16.8:1                      | 48                                 | ≤195  | 3250x1250x1850                             | 3350                                 |
| BC-320        | 320                         | YC6K500-D31           | 370                           | 6                        | 129                | 155                  | 12.16                     | 16.5:1                      | 48                                 | ≤192  | 3250x1290x1650                             | 2600                                 |
| BC-340        | 340                         | YC6K520-D30           | 382                           | 6                        | 129                | 155                  | 12.16                     | 16.5:1                      | 48                                 | ≤192  | 3250x1290x1650                             | 2600                                 |
| BC-400        | 400                         | YC6K600-D30           | 441                           | 6                        | 129                | 165                  | 12.94                     | 16.5:1                      | 48                                 | ≤192  | 3300x1200x1700                             | 2800                                 |
| BC-440        | 440                         | YC6K660-D30           | 490                           | 6                        | 129                | 165                  | 12.94                     | 16.5:1                      | 48                                 | ≤192  | 3300x1200x1700                             | 3000                                 |
| BC-500        | 500                         | YC6K780-D30           | 574                           | 6                        | 138                | 170                  | 15.3                      | 16.5:1                      | 44                                 | ≤200  | 3500x1500x1850                             | 4000                                 |
| BC-440        | 440                         | YC6T660-D31           | 485                           | 6                        | 145                | 165                  | 16.35                     | 15:1                        | 56                                 | ≤195  | 3400x1290x1710                             | 3500                                 |
| BC-500        | 500                         | YC6T780-D31           | 572                           | 6                        | 145                | 165                  | 16.35                     | 15:1                        | 56                                 | ≤195  | 3520x1260x1870                             | 3800                                 |
| BC-500        | 500                         | YC6TD780-D31          | 572                           | 6                        | 152                | 180                  | 19.60                     | 14:1                        | 64                                 | ≤195  | 3500x1500x1850                             | 4000                                 |
| BC-550        | 550                         | YC6TC840-D31          | 616                           | 6                        | 152                | 165                  | 17.96                     | 15:1                        | 52                                 | ≤225  | 3550x1500x1850                             | 4000                                 |



### 广西玉柴船电国三排放系列发电机组技术参数 Technical Parameters for YUCHAI T3 Series



| 机组型号<br>Model | 机组功率<br>Prime Power<br>(KW) | 柴油机型号<br>Engine Model | 柴油功率<br>Engine Power<br>(KW) | 缸数<br>No. of<br>Cylinder | 缸径<br>Bore<br>(mm) | 行程<br>Stroke<br>(mm) | 排量<br>Displacement<br>(L) | 压缩比<br>Compression<br>Ratio | 机油<br>容量<br>Lubrication<br>Oil (L) | 燃油<br>消耗<br>Fuel<br>Consumption<br>(g/kw.h) | 机组尺寸(MM)<br>Genset Dimensions<br>L x W x H | 机组重量<br>Genset Weight<br>(KG) |
|---------------|-----------------------------|-----------------------|------------------------------|--------------------------|--------------------|----------------------|---------------------------|-----------------------------|------------------------------------|---|--|-------------------------------|
| BC-550        | 550                         | YC6TD840-D31          | 616                          | 6                        | 152                | 180                  | 19.60                     | 14:1                        | 64                                 | ≤195  | 3550x1500x1850                             | 4000                          |
| BC-600        | 600                         | YC6TC900-D31          | 665                          | 6                        | 152                | 165                  | 17.96                     | 15:1                        | 52                                 | ≤225  | 3600x1500x1850                             | 4050                          |
| BC-600        | 600                         | YC6TD900-D31          | 665                          | 6                        | 152                | 180                  | 19.60                     | 14:1                        | 64                                 | ≤195  | 3600x1500x1850                             | 4300                          |
| BC-660        | 660                         | YC6TD1000-D30         | 735                          | 6                        | 152                | 180                  | 19.60                     | 14:1                        | 80                                 | ≤195  | 3700x1900x2050                             | 4500                          |
| BC-660        | 660                         | YC6C1020-D31          | 748                          | 6                        | 200                | 210                  | 39.58                     | 14.5:1                      | 175                                | ≤195  | 4250x1900x2280                             | 8200                          |
| BC-710        | 710                         | YC6TH1070-D31         | 787                          | 6                        | 175                | 195                  | 28.14                     | 15:1                        | 120                                | ≤202  | 4110x1970x2300                             | 6500                          |
| BC-710        | 710                         | YC6C1070-D31          | 787                          | 6                        | 200                | 210                  | 39.58                     | 14.5:1                      | 175                                | ≤195  | 4400x1800x2200                             | 8200                          |
| BC-700        | 700                         | YC6TD1100-D30         | 815                          | 6                        | 152                | 180                  | 19.598                    | 14:1                        | 56                                 | ≤220  | 4100x1500x2100                             | 5800                          |
| BC-800        | 800                         | YC6FD1220-D30         | 897                          | 6                        | 152                | 180                  | 19.598                    | 14:1                        | 56                                 | ≤220  | 4450x1750x2500                             | 7000                          |
| BC-800        | 800                         | YC6TH1220-D31         | 897                          | 6                        | 175                | 195                  | 28.14                     | 15:1                        | 120                                | ≤202  | 4200x2000x2300                             | 8000                          |
| BC-800        | 800                         | YC6C1220-D31          | 897                          | 6                        | 200                | 210                  | 39.58                     | 14.5:1                      | 176                                | ≤195  | 4450x1750x2500                             | 8200                          |
| BC-900        | 900                         | YC6TH1320-D31         | 968                          | 6                        | 175                | 195                  | 28.14                     | 15:1                        | 104                                | ≤202  | 4100x1970x2350                             | 8000                          |
| BC-900        | 900                         | YC6C1320-D31          | 968                          | 6                        | 200                | 210                  | 39.58                     | 14.5:1                      | 176                                | ≤195  | 4500x1700x2450                             | 8200                          |
| BC-1000       | 1000                        | YC6TF1520-D31         | 1118                         | 6                        | 175                | 220                  | 31.75                     | 13.5:1                      | 115                                | ≤220  | 4200x1700x2200                             | 7000                          |
| BC-1000       | 1000                        | YC6C1520-D31          | 1118                         | 6                        | 200                | 210                  | 39.58                     | 13.5:1                      | 175                                | ≤195  | 4600x1800x2500                             | 8500                          |
| BC-1100       | 1100                        | YC6TF1660-D31         | 1221                         | 6                        | 175                | 220                  | 31.75                     | 13.5:1                      | 115                                | ≤220  | 4200x1700x2200                             | 7300                          |
| BC-1100       | 1100                        | YC6C1660-D30          | 1221                         | 6                        | 200                | 210                  | 39.58                     | 13.5:1                      | 180                                | ≤195  | 4600x2120x2250                             | 8500                          |
| BC-900        | 900                         | YC12VTD1350-D30       | 990                          | 12                       | 152                | 180                  | 39.2                      | 14:1                        | 215                                | ≤198  | 4500x2500x2550                             | 8500                          |
| BC-1000       | 1000                        | YC12VTD1500-D30       | 1100                         | 12                       | 152                | 180                  | 39.2                      | 14:1                        | 215                                | ≤198  | 4500x2500x2550                             | 8500                          |
| BC-1100       | 1100                        | YC12VTD1680-D30       | 1230                         | 12                       | 152                | 180                  | 39.2                      | 14:1                        | 215                                | ≤198  | 4500x2500x2500                             | 8800                          |
| BC-1200       | 1200                        | YC12VTD1830-D30       | 1342                         | 12                       | 152                | 180                  | 39.2                      | 14:1                        | 220                                | ≤198  | 4500x2600x2500                             | 8800                          |
| BC-1300       | 1300                        | YC12VTD2000-D30       | 1480                         | 12                       | 152                | 180                  | 39.2                      | 14:1                        | 220                                | ≤198  | 4600x2300x2600                             | 5000                          |
| BC-1100       | 1100                        | YC12VC1680-D30        | 1230                         | 12                       | 200                | 210                  | 79.17                     | 13.5:1                      | 360                                | ≤196  | 5400x2150x2800                             | 14500                         |
| BC-1350       | 1350                        | YC12VC2070-D31        | 1520                         | 12                       | 200                | 210                  | 79.17                     | 13.5:1                      | 360                                | ≤196  | 5400x2150x2800                             | 14500                         |
| BC-1500       | 1500                        | YC12VC2270-D31        | 1670                         | 12                       | 200                | 210                  | 79.17                     | 13.5:1                      | 360                                | ≤196  | 5450x2150x2850                             | 14700                         |
| BC-1500       | 1500                        | YC16VTD2270-D30       | 1672                         | 16                       | 152                | 180                  | 52.26                     | 14:1                        | 280                                | ≤205  | 5100x2650x2850                             | 13000                         |
| BC-1600       | 1600                        | YC12VC2510-D31        | 1850                         | 12                       | 200                | 210                  | 79.17                     | 13.5:1                      | 360                                | ≤196  | 5500x2200x2850                             | 14800                         |
| BC-1650       | 1650                        | YC16VTD2510-D30       | 1850                         | 16                       | 152                | 180                  | 52.26                     | 14:1                        | 280                                | ≤205  | 5700x2650x2850                             | 13200                         |
| BC-1800       | 1800                        | YC12VC2700-D31        | 1985                         | 12                       | 200                | 210                  | 79.17                     | 13.5:1                      | 370                                | ≤196  | 6300x2550x3050                             | 16000                         |
| BC-1800       | 1800                        | YC16VTD2700-D30       | 1985                         | 16                       | 152                | 180                  | 52.26                     | 14:1                        | 280                                | ≤200  | 5100x2650x2850                             | 13800                         |
| BC-2000       | 2000                        | YC12VC3000-D30        | 2206                         | 12                       | 200                | 210                  | 79.17                     | 13.5:1                      | 370                                | ≤200  | 6300x2550x3080                             | 16500                         |
| BC-2000       | 2000                        | YC16VC3000-D31        | 2206                         | 16                       | 200                | 210                  | 105.56                    | 13.5:1                      | 430                                | ≤195  | 6500x3000x3000                             | 16500                         |
| BC-2200       | 2200                        | YC16VC3300-D31        | 2426                         | 16                       | 200                | 210                  | 105.56                    | 13.5:1                      | 384                                | ≤195  | 8000x2750x3050                             | 21000                         |
| BC-2400       | 2400                        | YC16VC3600-D31        | 2646                         | 16                       | 200                | 210                  | 105.56                    | 13.5:1                      | 430                                | ≤195  | 6500x3000x3000                             | 17000                         |
| BC-2600       | 2600                        | YC16VC4000-D31        | 2940                         | 16                       | 200                | 210                  | 105.56                    | 13.5:1                      | 430                                | ≤195  | 6500x3000x3000                             | 17600                         |

### 东杭动力系列发电机组技术参数

Technical parameters of Donghang Power series generator sets

| 机组型号<br>Model | 机组功率<br>Prime Power<br>(KW) | 柴油机型号<br>Engine Model | 缸数<br>No. of<br>Cylinder | 排量<br>Displacement<br>(L) | 机组尺寸(MM)<br>Genset Dimensions<br>L x W x H | 机组重量<br>Genset Weight<br>(KG) |
|---------------|-----------------------------|-----------------------|--------------------------|---------------------------|--|-------------------------------|
| BC-30         | 30                          | BCZH4100D             | 4                        | 3.26                      | 1600x600x1000                              | 550                           |
| BC-50         | 50                          | BCZH4105ZD            | 4                        | 5.76                      | 1600x600x1000                              | 600                           |
| BC-100        | 100                         | BCR6105AZLD           | 6                        | 6.49                      | 2400x700x1500                              | 1000                          |
| BC-120        | 120                         | BCR6105IZLD           | 6                        | 6.75                      | 2400x700x1500                              | 1000                          |
| BC-150        | 150                         | BCR6100ZLD            | 6                        | 7.01                      | 2400x700x1500                              | 1200                          |
| BC-200        | 200                         | BCP10ZLD              | 6                        | 8.9                       | 3000x900x1700                              | 2000                          |
| BC-250        | 250                         | BC618ZLD              | 6                        | 8.9                       | 3000x900x1700                              | 2200                          |
| BC-300        | 300                         | BCP12ZLD              | 6                        | 9.726                     | 3000x900x1700                              | 2500                          |
| BC-350        | 350                         | BCP13ZLD              | 6                        | 9.726                     | 3200x1000x1700                             | 2500                          |



## 东柴系列发电机组技术参数

Technical parameters of dongchai series generator sets



## 凯普系列发电机组技术参数

Technical parameters of kaipu series generator sets

| 机组型号<br>Unit model | 机组功率<br>Unit power (KW) | 发动机功率<br>Engine power (KW) | 发动机型号<br>Engine model | 缸数/排列<br>Number of vat / arrangement | 缸径<br>Cylinder diameter (mm) | 行程<br>Trip (mm) | 排量<br>Displacement (L) | 燃油消耗<br>Fuel consumption (g/kw.h) | 机组尺寸 L x W x H<br>Unit size (mm) | 机组重量<br>Unit weight (kg) |
|--------------------|-------------------------|----------------------------|-----------------------|--------------------------------------|------------------------------|-----------------|------------------------|-----------------------------------|----------------------------------|--------------------------|
| BC-D150GF          | 120                     | 171                        | DC8D220D2             | 6/L                                  | 135                          | 150             | 12.8                   | ≤198                              | 2600x1000x1500                   | 1500                     |
| BC-D160GF          | 160                     | 206                        | DC8D280D2             | 6/L                                  | 135                          | 150             | 12.8                   | ≤198                              | 2800x1100x1600                   | 1500                     |
| BC-D180GF          | 180                     | 227                        | DC9D310D2             | 6/L                                  | 135                          | 150             | 12.8                   | ≤206                              | 2800x1100x1600                   | 1600                     |
| BC-D200GF          | 200                     | 263                        | DC250                 | 6/L                                  | 135                          | 150             | 12.8                   | ≤198                              | 2800x1100x1600                   | 2100                     |
| BC-D250GF          | 250                     | 316                        | DC310                 | 6/L                                  | 135                          | 155             | 13.3                   | ≤198                              | 2900x1200x1800                   | 2300                     |
| BC-D300GF          | 300                     | 350                        | DC350                 | 6/L                                  | 135                          | 160             | 14.5                   | ≤198                              | 3000x1200x2000                   | 2800                     |
| BC-D320GF          | 320                     | 425                        | DC425                 | 6/L                                  | 135                          | 168             | 14.9                   | ≤198                              | 3000x1200x2000                   | 3000                     |
| BC-D360GF          | 360                     | 441                        | DC441                 | 6/L                                  | 135                          | 168             | 14.9                   | ≤198                              | 3000x1200x2000                   | 3200                     |
| BC-D380GF          | 380                     | 475                        | DC475                 | 6/L                                  | 135                          | 168             | 14.9                   | ≤198                              | 3000x1200x2000                   | 3300                     |
| BC-D450GF          | 450                     | 515                        | DC515                 | 6/L                                  | 138                          | 170             | 16.2                   | ≤198                              | 3000x1200x2000                   | 3300                     |
| BC-D420GF          | 420                     | 535                        | DC535                 | 6/L                                  | 138                          | 170             | 16.2                   | ≤198                              | 3000x1200x2000                   | 3300                     |
| BC-D250GF          | 250                     | 308                        | DC14HD22              | 6/L                                  | 135                          | 160             | 13.73                  | ≤198                              | 3000x1230x2000                   | 2400                     |
| BC-D280GF          | 280                     | 350                        | DC13HD11              | 6/L                                  | 135                          | 150             | 12.88                  | ≤198                              | 2900x1200x1800                   | 2300                     |
| BC-D420GF          | 420                     | 510                        | DCV510                | 12/V                                 | 135                          | 150             | 25.8                   | ≤198                              | 3500x1500x2100                   | 3980                     |
| BC-D450GF          | 450                     | 550                        | DCV550                | 12/V                                 | 135                          | 150             | 25.8                   | ≤198                              | 3500x1500x2100                   | 4000                     |
| BC-D500GF          | 500                     | 610                        | DCV610                | 12/V                                 | 135                          | 155             | 26.6                   | ≤198                              | 3500x1500x2100                   | 4000                     |
| BC-D550GF          | 550                     | 630                        | DCV630                | 12/V                                 | 135                          | 158             | 28.36                  | ≤198                              | 3500x1500x2100                   | 4100                     |
| BC-D600GF          | 600                     | 660                        | DCV660                | 12/V                                 | 135                          | 158             | 28.36                  | ≤198                              | 3500x1500x2100                   | 4100                     |
| BC-D620GF          | 620                     | 720                        | DCV720                | 12/V                                 | 138                          | 158             | 28.8                   | ≤198                              | 3800x1600x2300                   | 4200                     |
| BC-D650GF          | 650                     | 780                        | DCV780                | 12/V                                 | 138                          | 158             | 28.8                   | ≤198                              | 3800x1600x2300                   | 4300                     |
| BC-D700GF          | 700                     | 840                        | DCV840                | 12/V                                 | 138                          | 158             | 28.8                   | ≤198                              | 3800x1600x2300                   | 4500                     |
| BC-D720GF          | 720                     | 936                        | DCV936                | 12/V                                 | 138                          | 165             | 32.7                   | ≤198                              | 3800x1600x2300                   | 4600                     |
| BC-D750GF          | 750                     | 970                        | DCV970                | 12/V                                 | 138                          | 165             | 32.7                   | ≤198                              | 3800x1600x2300                   | 4800                     |
| BC-D800GF          | 800                     | 1030                       | DCV1100               | 12/V                                 | 138                          | 168             | 33.8                   | ≤198                              | 4000x1800x2500                   | 4800                     |
| BC-D850GF          | 850                     | 1160                       | DCV1200               | 12/V                                 | 138                          | 165             | 32.7                   | ≤198                              | 4000x1800x2500                   | 4900                     |
| BC-D900GF          | 900                     | 1210                       | DCV1300               | 12/V                                 | 138                          | 168             | 33.8                   | ≤198                              | 4000x1800x2500                   | 5200                     |
| BC-D950GF          | 950                     | 1260                       | DCV1420               | 12/V                                 | 138                          | 168             | 33.8                   | ≤198                              | 4000x1800x2500                   | 5200                     |
| BC-D1000GF         | 1000                    | 1310                       | DCV1480               | 12/V                                 | 138                          | 168             | 33.8                   | ≤198                              | 4000x1800x2500                   | 5800                     |

| 机组型号<br>Unit model | 主用功率<br>Prime power (KW) | 备用功率<br>Standby Power (KW) | 发动机型号<br>Engine model | 缸数/排列<br>Number of vat / arrangement | 缸径<br>Cylinder diameter (mm) | 行程<br>Trip (mm) | 排量<br>Displacement (L) | 燃油消耗<br>Fuel consumption (g/kw.h) | 机组尺寸 L x W x H<br>Unit size (mm) | 机组重量<br>Unit weight (kg) |
|--------------------|--------------------------|----------------------------|-----------------------|--------------------------------------|------------------------------|-----------------|------------------------|-----------------------------------|----------------------------------|--------------------------|
| BC-120             | 120                      | 130                        | KP8D220D2             | 6L                                   | 114                          | 135             | 8.3                    | 200                               | 2300×850×1350                    | 1200                     |
| BC-160             | 160                      | 180                        | KP8D280D2             | 6L                                   | 114                          | 135             | 8.3                    | 200                               | 2300×850×1350                    | 1200                     |
| BC-180             | 180                      | 200                        | KP9D310D2             | 6L                                   | 114                          | 135             | 8.3                    | 200                               | 2500×890×1400                    | 1600                     |
| BC-200             | 200                      | 220                        | KP9D340D2             | 6L                                   | 114                          | 144             | 8.8                    | 195                               | 2500×890×1400                    | 1600                     |
| BC-250             | 250                      | 270                        | KP9DG34               | 6L                                   | 114                          | 144             | 8.8                    | 195                               | 2500×890×1400                    | 1600                     |
| BC-250             | 250                      | 280                        | KP308                 | 6L                                   | 135                          | 150             | 12.88                  | 200                               | 2900×950×1600                    | 2350                     |
| BC-280             | 280                      | 310                        | KP330                 | 6L                                   | 135                          | 150             | 13.73                  | 198                               | 2900×950×1600                    | 2350                     |
| BC-300             | 300                      | 330                        | KP375                 | 6L                                   | 135                          | 165             | 14.16                  | 200                               | 2900×950×1600                    | 2350                     |
| BC-320             | 320                      | 350                        | KP425                 | 6L                                   | 135                          | 165             | 14.9                   | 198                               | 2900×950×1600                    | 2350                     |
| BC-360             | 360                      | 400                        | KP441                 | 6L                                   | 135                          | 165             | 14.9                   | 198                               | 3000×960×1600                    | 2600                     |
| BC-380             | 380                      | 420                        | KP475                 | 6L                                   | 135                          | 165             | 14.9                   | 198                               | 3000×960×1600                    | 2600                     |
| BC-400             | 400                      | 440                        | KP515                 | 6L                                   | 138                          | 165             | 16.2                   | 198                               | 3000×960×1600                    | 2600                     |
| BC-450             | 430                      | 470                        | KP540                 | 6L                                   | 138                          | 170             | 16.8                   | 198                               | 3000×960×1600                    | 2600                     |
| BC-420             | 420                      | 460                        | KPV510                | 12V                                  | 135                          | 150             | 14.6                   | 198                               | 3000×960×1600                    | 2600                     |
| BC-450             | 450                      | 500                        | KPV550                | 12V                                  | 135                          | 150             | 26.6                   | 198                               | 4000×1300×1900                   | 3900                     |
| BC-460             | 460                      | 500                        | KP25G690D2            | 12V                                  | 130                          | 150             | 25.8                   | 203                               | 4000×1300×1900                   | 3900                     |
| BC-500             | 500                      | 550                        | KPV610                | 12V                                  | 135                          | 155             | 26.6                   | 198                               | 4000×1300×1900                   | 3900                     |
| BC-500             | 500                      | 550                        | KP27G755D2            | 12V                                  | 135                          | 155             | 26.6                   | 203                               | 4000×1300×1900                   | 3900                     |
| BC-550             | 550                      | 600                        | KPV630                | 12V                                  | 135                          | 155             | 26.6                   | 198                               | 4500×1520×2100                   | 4000                     |
| BC-570             | 570                      | 620                        | KP27G830D2            | 12V                                  | 135                          | 155             | 26.6                   | 203                               | 4500×1520×2100                   | 4000                     |
| BC-580             | 580                      | 660                        | KPV660                | 12V                                  | 138                          | 155             | 26.6                   | 198                               | 4500×1520×2100                   | 4000                     |
| BC-600             | 600                      | 660                        | KP27G900D2            | 12V                                  | 135                          | 155             | 26.6                   | 203                               | 4500×1520×2100                   | 4000                     |
| BC-620             | 620                      | 680                        | KPV720                | 12V                                  | 135                          | 155             | 26.6                   | 198                               | 4500×1520×2100                   | 4000                     |
| BC-650             | 650                      | 720                        | KPV780                | 12V                                  | 135                          | 158             | 28.8                   | 198                               | 4600×1520×2100                   | 4200                     |
| BC-680             | 680                      | 750                        | KPV840                | 12V                                  | 138                          | 158             | 28.8                   | 198                               | 4600×1520×2100                   | 4200                     |
| BC-720             | 720                      | 800                        | KPV936                | 12V                                  | 138                          | 165             | 32.7                   | 198                               | 4600×1520×2100                   | 4200                     |
| BC-750             | 750                      | 850                        | KPV970                | 12V                                  | 138                          | 165             | 32.7                   | 198                               | 4600×1520×2100                   | 4500                     |
| BC-820             | 820                      | 900                        | KPV1100               | 12V                                  | 138                          | 168             | 32.7                   | 198                               | 4700×1650×2200                   | 5500                     |
| BC-850             | 850                      | 950                        | KPV1200               | 12V                                  | 138                          | 165             | 32.7                   | 198                               | 4700×1650×2200                   | 5800                     |
| BC-900             | 900                      | 1000                       | KPV1300               | 12V                                  | 138                          | 168             | 33.8                   | 198                               | 4700×1650×2200                   | 6000                     |
| BC-950             | 950                      | 1050                       | KPV4TD                | 12V                                  | 138                          | 168             | 35.3                   | 198                               | 4500×1850×2250                   | 6200                     |
| BC-1000            | 1000                     | 1100                       | KPV4TDS               | 12V                                  | 138                          | 168             | 36.7                   | 198                               | 4700×1850×2250                   | 6400                     |

# 应用领域 APPLICATION

智能电源整体解决方案提供商  
Intelligent power overall solution provider

## 应用场景 Application Scenarios



## 工业制造 Industrial Manufacturing



工厂备用电源  
Factory Backup Power



车辆动力设备  
Vehicle Power Equipment



采矿设备  
Mining equipment



## 居住区 Residential district



应急备用电源  
Emergency Backup Power



应急通信  
Emergency Communications



拖车  
Trailer Power



## 公共设施 Public facilities



医院  
Healthcare



教育与研究  
Education and Research



运输  
Transportation





◀ 出口非洲低噪音机组  
Low noise units exported to Africa

▼ 出口以色列静音机组  
Export Israel Silent Unit

▲ 安哥拉渔业客户现场  
Angola fishery customer site



▼ 学校用静音机组  
Silent unit for school use

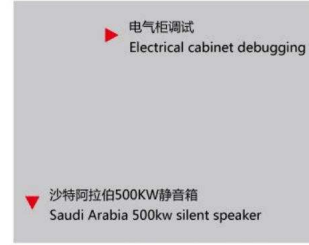


▲ 船用机组  
Marine unit

▶ 船用机组  
Marine unit



◀ 特变电工  
TBEA



▶ 电气柜调试  
Electrical cabinet debugging



▼ 沙特阿拉伯500KW静音箱  
Saudi Arabia 500kw silent speaker



▲ 银行用发电机组  
Bank generator set



◀ 马尔代夫酒店  
Maldives Hotels



▲ 化工厂行业  
Chemical plant industry

▶ 杭州亚运会  
Hangzhou Asian games



◀ 定制箱式变压器  
Customized box type transformer

▶ 非洲达喀尔  
Dakar, Africa



## 分布式天然气发电方案

Natural gas power solution

分布式天然气发电方案分布式能源是分布在用户端的供能及能源综合利用系统。天然气发电是最稳定的分布式供能方式之一，优秀的冷热电三联供发电系统能够把天然气发电的有效率提高到95%以上。发展分布式天然气发电系统是实现节能减排和能源供应可持续发展的必由之路，具有节能、减排、提高供能安全性、电力与天然气供应削峰填谷、及促进循环经济发展等众多的优势，是现代能源领域发展的不可逆转的潮流。

Distributed energy is the energy supply and comprehensive utilization system, which is located near the end-user. Natural gas power generation is one of the most stable distributed energy supply solution. An excellent CCHP (Combined Cold, Heat and Power) system can increase the efficiency of natural gas power generation up to 95% and above.

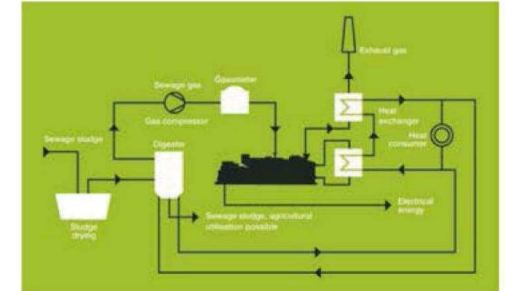
Developing distributed natural gas power generation system is an inevitable option to realize energy saving, emission reduction and sustainable development of energy supply. It can realize energy saving, emission reduction, improving the safety of energy supply, peak shaving and valley filling for power and gas supply, and promoting the development of circular economy etc. It's an irreversible trend in the development of modern energy resources.



## 沼气发电方案

Biogas power solution

沼气发电随着大型沼气池建设和沼气综合利用的不断发展而出现的一项沼气利用技术。有机物质（如作物秸秆、人畜粪便、垃圾、泥污、城市生活垃圾及工业有机废水等）在厌氧条件下，通过微生物的分解代谢产生沼气。将沼气用于发动机，不仅解决了沼气工程中的环境问题，减少温室气体排放，而且变废为宝，产生了大量热能和电能，符合能源再循环利用的环保理念，同时带来可观的经济利益。



Biogas Electricity Generation is a technology to use biogas with the development of large scale biogas project and comprehensive utility of biogas. Organic waste such as grain stalks, human and livestock manure, rubbish, mud, municipal solid waste and industrial organic waste water can produce under anaerobic conditions. If biogas is used to generate electricity, not only environmental problem in biogas project is solved, but greenhouse gas release is also reduced. Wasted is transformed into treasure, huge heat and electricity are also produced. This is a good idea for environmental production and energy recycling. At the same time, there is also remarkable economic benefit.



# 燃气型发电机组

Gas fired generator set

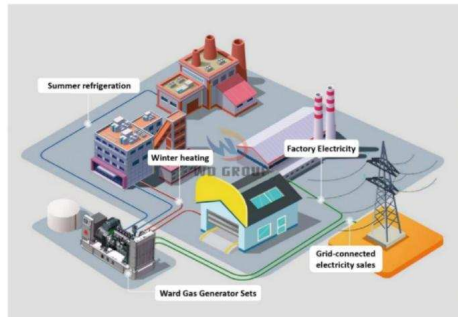
## 系列/Series

燃气发电机充分利用各种天然气或有害气体作为燃料，变废为宝、运行安全方便，成本效益高，排放污染低并适宜热、电联产等优点，市场前景十分广阔。我国的天然气资源十分丰富，相对于我国丰富的天然气储量，天然气在我国一次能源消费中所占比例显得太小，未来具有大幅提高的潜力。在我国，由于受到天然气供应的影响，天然气发电尚处于初始阶段。真正大面积的天然气发电作为分布能源站还要假以时日。小规模天然气发电主要是在油田、气田以及机场、酒店、医院等。可以预计，随着天然气供应的愈加充足、供应范围的不断扩大，近几年天然气发电将会得到一个飞速的发展。

Gas generators make full use of various natural or harmful gases as fuel, turning waste into treasure, operating safely and conveniently, with high cost-effectiveness, low emissions and pollution, and suitable for cogeneration of heat and electricity. The market prospects are very broad. China has abundant natural gas resources, and compared to its abundant natural gas reserves, the proportion of natural gas in China's primary energy consumption appears to be too small, with great potential for significant improvement in the future. In China, due to the impact of natural gas supply, natural gas power generation is still in its initial stage. It will take time for large-scale natural gas power generation to become a distributed energy station. Small scale natural gas power generation is mainly carried out in oil and gas fields, as well as airports, hotels, hospitals, etc. It can be expected that with the increasing supply of natural gas and the continuous expansion of the supply range, natural gas power generation will experience rapid development in recent years.

- 一、发电质量好
- 二、启动性能好，启动成功率高
- 三、噪声低振动小
- 四、采用的可燃性气体是清洁、廉价的能源

- 1. Good power generation quality
- 2. Good startup performance and high success rate
- 3. Low noise and low vibration
- 4. The combustible gas used is a clean and inexpensive energy source

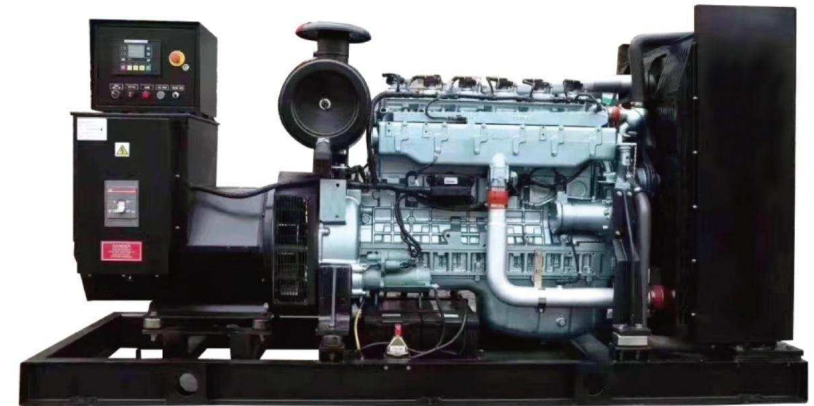


# 重汽系列燃气发电机组

Sinotruk Series Gas Generator Set

Газовый генераторный аппарат Sinotruk

| 机组型号<br>Genset Model<br>Модель экипажа. | 常用功率<br>Rated Power<br>Постоянная мощность<br>(kW/KVA) | 备用功率<br>Standby Power<br>Резервная мощность<br>(kW/KVA) | 额定电流<br>Rated Current<br>Номинальный ток<br>(A) | 发动机型号<br>Engine Model<br>Модель двигателя | 缸数<br>Cylinder No.<br>Номер цилиндра | 缸径*行程<br>Bore*Stroke<br>Цилиндров диаметр x маршрут<br>(mm) | 气体消耗量<br>Gas consumption<br>Расход газа<br>(m³/kW.h) |                               | 尺寸<br>Dimension<br>Размер<br>(L*W*H mm) | 净重<br>Weight<br>вес<br>(kg) |
|---|--|---|---|---|--------------------------------------|---|--|-------------------------------|---|-----------------------------|
|   |  |   |   |   |                                      |   | 天然气<br>Natural Gas                                   | 沼气<br>Biogas<br>Природный газ |   |                             |
| BC-120GF                                | 120/150  | 132/165   | 216   | T10D                                      | 6.L                                  | 126*155   | 0.33   | 0.55                          | 2970*1150*1700                          | 2050                        |
| BC-150GF                                | 150/187.5  | 165/206.5   | 270   | T10D                                      | 6.L                                  | 126*155   | 0.33   | 0.55                          | 2970*1150*1700                          | 2100                        |
| BC-180GF                                | 180/225  | 198/247.5   | 324   | T12D                                      | 6.L                                  | 127*165   | 0.33   | 0.55                          | 3050*1200*1700                          | 2300                        |
| BC-200GF                                | 200/250  | 220/275   | 360   | T12D                                      | 6.L                                  | 127*165   | 0.33   | 0.55                          | 3050*1200*1700                          | 2350                        |
| BC-250GF                                | 250/312.5  | 275/343.75  | 450   | T12D                                      | 6.L                                  | 127*165   | 0.33   | 0.55                          | 3200*1250*1750                          | 2700                        |





## 玉柴燃气发电机组

Yuchai Gas Generator Set



### 玉柴燃气机组技术特点 / Feature

#### 适用范围广 Wide applicability

The Yuchai gas generator set can be used with different types of gas, such as natural gas, biogas, coalbed methane, oilfield associated gas, synthetic gas, etc.

玉柴燃气发电机组能够适用不同类型的燃气：如：天然气、沼气、煤层气、油田伴生气、合成气等。

#### 高可靠性 High reliability

On the basis of mature product platforms, Yuchai has independently developed and manufactured high-temperature wear-resistant materials and high-strength components suitable for gas generator sets, greatly improving the reliability and durability of the products, with a maximum overhaul period of 40000 hours.

在成熟产品的平台基础上，玉柴自主开发和制造了适用于燃气发电机组的高温耐磨材料以及高强度的零部件，大幅提高产品的可靠性和耐用性，大修期最高40000h。

#### 高效环保 Efficient and environmentally friendly

The gas engine adopts mature technologies such as lean combustion, capacitive high-energy ignition module, Yuchai patented combustion chamber, high-efficiency turbocharger, oxygen sensor closed-loop control, etc., to ensure efficient combustion and clean emissions of gas.

燃气发动机采用成熟的稀薄燃烧、电容式高能点火模块、玉柴专利燃烧室、高效增压器、氧传感器闭环控制等技术，保证燃气高效燃烧和清洁的排放。

#### 维护费用低 Low maintenance costs

Gas generator sets are equipped with components that are universal and easy to maintain, greatly reducing the maintenance costs of power generation equipment.

燃气发电机组配套使用通用性好、维修方便的零部件，大幅降低发电设备维护费用。

#### 安全防护 Safety protection

Adopting an independent and mature unit control system, the control system ensures stable control and overall safety.

采用独立成熟的机组控制系统，控制系统控制稳定确保整机安全性。

### 天然气机组技术参数 / Technical parameters of natural gas units

| 机组型号 Unit model  | 频率(Hz) Frequency | 功率(kw) Power | 转速(r/min) Speed | 尺寸(mm) Size    | 重量(kg) Weight |
|------------------|------------------|--------------|-----------------|----------------|---------------|
| YC6KG-200N5LC    | 50               | 200          | 1500            | 3150×1320×1670 | 2910          |
| YC6KG-250N5LC    | 50               | 250          | 1500            | 3200×1320×1670 | 3030          |
| YC6TG-300N5LC    | 50               | 300          | 1500            | 3450×1400×1810 | 3650          |
| YC6TDG-350N5LC   | 50               | 350          | 1500            | 3550×1470×1910 | 4270          |
| YC6TDG-400N5LC   | 50               | 400          | 1500            | 3550×1470×1910 | 4390          |
| YC6CG-400N5LC    | 50               | 400          | 1500            | 4900×2560×2840 | 8690          |
| YC6CG-500N5LC    | 50               | 500          | 1500            | 4900×2560×2840 | 8890          |
| YC6CG-600N5LC    | 50               | 600          | 1500            | 4900×2560×2840 | 9030          |
| YC12VTDG-700N5LC | 50               | 700          | 1500            | 5000×2560×2940 | 9050          |
| YC12VTDG-800N5LC | 50               | 800          | 1500            | 5100×2560×2940 | 9350          |
| YC12VCG-1000N5LC | 50               | 1000         | 1000            | 6000×2600×3015 | 17500         |

### 沼气机组技术参数 / Technical parameters of biogas unit

| 机组型号 Unit model  | 频率(Hz) Frequency | 功率(kw) Power | 转速(r/min) Speed | 尺寸(mm) Size    | 重量(kg) Weight |
|------------------|------------------|--------------|-----------------|----------------|---------------|
| YC6KG-200B5LC    | 50               | 200          | 1500            | 3150×1320×1670 | 2910          |
| YC6TG-250B5LC    | 50               | 250          | 1500            | 3450×1400×1810 | 4850          |
| YC6TDG-300B5LC   | 50               | 300          | 1500            | 7180×2400×2650 | 5500          |
| YC6TDG-350B5LC   | 50               | 350          | 1500            | 3550×1470×1910 | 5650          |
| YC6CG-400B5LC    | 50               | 400          | 1500            | 4900×2560×2840 | 8690          |
| YC6CG-500B5LC    | 50               | 500          | 1500            | 4900×2560×2840 | 8890          |
| YC12VTDG-700B5LC | 50               | 700          | 1500            | 5000×2560×2940 | 9050          |
| YC12VTDG-800B5LC | 50               | 800          | 1500            | 5100×2560×2940 | 9350          |
| YC12VCG-1000B5LC | 50               | 1000         | 1000            | 6000×2600×3015 | 17500         |

### 煤瓦斯机组技术参数 / Technical parameters of coal gas unit

| 机组型号 Unit model  | 频率(Hz) Frequency | 功率(kw) Power | 转速(r/min) Speed | 尺寸(mm) Size    | 重量(kg) Weight |
|------------------|------------------|--------------|-----------------|----------------|---------------|
| YC6TDG-350M5LC   | 50               | 350          | 1500            | 3550×1470×1910 | 4270          |
| YC6CG-400M5LC    | 50               | 400          | 1500            | 4900×2560×2840 | 8690          |
| YC6CG-500M5LC    | 50               | 500          | 1500            | 4900×2560×2840 | 8890          |
| YC12VCG-1000M5LC | 50               | 1000         | 1000            | 6000×2600×3015 | 17500         |
| YC16VCG-1500M5LC | 50               | 1500         | 1000            | 7180×2600×3015 | 20000         |



## 潍柴燃气发电机组 Weichai Gas Generator Set



### 潍柴气体发电机组型谱 / Land Based CNG Gen-sets

(50Hz)

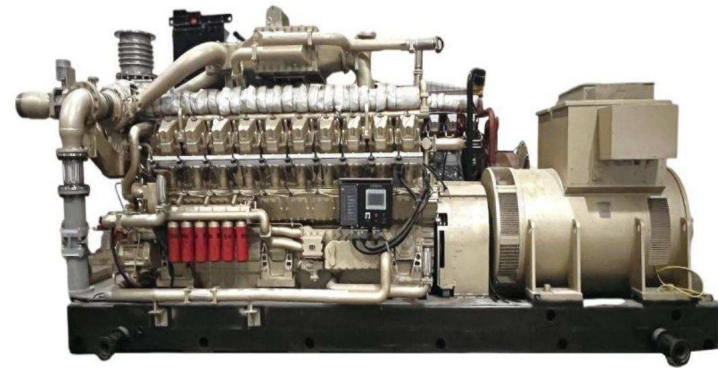
| 类型 Type | 型号 Model    | 连续功率 Continuous power |      | 原始功率 Prime power |      | 潍柴发动机 Weichai engine |                  |
|---------|-------------|-----------------------|------|------------------|------|----------------------|------------------|
|         |             | kVA                   | kW   | kVA              | kW   | 型号 Model             | 原始功率 Prime power |
| B, L    | WPG75*9NG   | 62                    | 50   | 75               | 60   | WP4D77E300NG         | 70               |
| B, L    | WPG125*9NG  | 100                   | 80   | 125              | 100  | WP6D132E300NG        | 120              |
| B, L    | WPG188*8NG  | 150                   | 120  | 188              | 150  | WP10D200E300NG       | 182              |
| B, L    | WPG312*8NG  | 250                   | 200  | 312              | 250  | WP13D317E300NG       | 288              |
| B, L    | WPG500*7NG  | 400                   | 320  | 500              | 400  | 6M33G6N0/5           | 450              |
| B, C    | WPG625*7NG  | 625                   | 500  | 625              | 500  | 12M33G2N0/5          | 600              |
| B, C    | WPG1000*7NG | 838                   | 670  | 1000             | 800  | 12M33G10N0/5         | 900              |
| B, C    | WPG1375*7NG | 1375                  | 1100 | 1375             | 1100 | 16M33G6N0/5          | 1280             |
| B, C    | WPG1750*7NG | 1750                  | 1400 | 1750             | 1400 | 12M55G6N0/5          | 1588             |

### 潍柴气体发电机组型谱 / Land Based CNG Gen-sets

(60Hz)

| 类型 Type | 型号 Model     | 连续功率 Continuous power |      | 原始功率 Prime power |      | 潍柴发动机 Weichai engine |                  |
|---------|--------------|-----------------------|------|------------------|------|----------------------|------------------|
|         |              | kVA                   | kW   | kVA              | kW   | 型号 Model             | 原始功率 Prime power |
| B, L    | WPG60*96NG   | 62                    | 50   | 75               | 60   | WP4D77E301NG         | 70               |
| B, L    | WPG100*96NG  | 100                   | 80   | 125              | 100  | WP6D132E301NG        | 120              |
| B, L    | WPG180*86NG  | 181                   | 145  | 225              | 180  | WP10D238E301NG       | 216              |
| B, L    | WPG250*86NG  | 250                   | 200  | 312              | 250  | WP13D317E301NG       | 288              |
| B, L    | WPG400*76NG  | 412                   | 330  | 500              | 400  | 6M33G6N0/6           | 480              |
| B, C    | WPG500*76NG  | 625                   | 500  | 625              | 500  | 12M33G2N0/6          | 600              |
| B, C    | WPG850*76NG  | 900                   | 720  | 1062             | 850  | 12M33G14N0/6         | 960              |
| B, C    | WPG1100*76NG | 1375                  | 1100 | 1375             | 1100 | 16M33G6N0/6          | 1280             |

## 济柴燃气发电机组 Jichai Gas Generator Set



### 天然气机组技术参数 / Technical parameters of natural gas units

| 机组型号 Unit model | 频率(Hz) Frequency | 功率(kw) Power | 转速(r/min) Speed | 尺寸(mm) Size    | 重量(kg) Weight |
|-----------------|------------------|--------------|-----------------|----------------|---------------|
| 300GF30-T       | 50/60            | 300          | 1500/1800       | 3701*1345*1701 | 3900          |
| 500GF-T         | 50/60            | 500          | 1000/1200       | 4566*2040*2780 | 11800         |
| 750GF-T         | 50/60            | 750          | 1000/1200       | 4770*2040*2249 | 13000         |
| 1100GF-T        | 50/60            | 1100         | 1000/1200       | 5998*2180*2540 | 19800         |
| 1500GF-T        | 50/60            | 1500         | 1000/1200       | 6452*2180*2540 | 24000         |
| 2000GF10-T      | 50/60            | 2000         | 1000/1200       | 7500*2300*2800 | 30000         |
| 3000GF-T        | 50/60            | 3000         | 1000/900        | 8330*2930*3638 | 48000         |
| 4000GF-T        | 50/60            | 4000         | 1000/900        | 9435*2930*4175 | 70000         |

### 沼气机组技术参数 / Technical parameters of biogas unit

| 机组型号 Unit model | 频率(Hz) Frequency | 功率(kw) Power | 转速(r/min) Speed | 尺寸(mm) Size    | 重量(kg) Weight |
|-----------------|------------------|--------------|-----------------|----------------|---------------|
| 600GF-N         | 50/60            | 600          | 1000/1200       | 5120*2040*2777 | 13800         |
| 700GF-N         | 50/60            | 700          | 1000/1200       | 4777*2040*2249 | 13000         |
| 1000GF-Z        | 50/60            | 1000         | 1000/1200       | 6189*2540*2180 | 21000         |
| 1400GF-Z        | 50/60            | 1400         | 1000/1200       | 8100*2300*2800 | 26700         |
| 1600GF-Z        | 50/60            | 1600         | 1000/1200       | 7500*2300*2800 | 29000         |
| 1800GF-Z        | 50/60            | 1800         | 1000/1200       | 7900*2300*2800 | 20600         |

### 瓦斯气机组技术参数 / Technical parameters of gas turbine unit

| 机组型号 Unit model | 频率(Hz) Frequency | 功率(kw) Power | 转速(r/min) Speed | 尺寸(mm) Size    | 重量(kg) Weight |
|-----------------|------------------|--------------|-----------------|----------------|---------------|
| 600GF-W         | 50/60            | 600          | 1000/1200       | 5120*2040*2777 | 13800         |
| 700GF-W         | 50/60            | 700          | 1000/1200       | 5120*2180*2540 | 14000         |
| 1000GF-W        | 50/60            | 1000         | 1000/1200       | 6189*2540*2180 | 21000         |
| 1500GF-W        | 50/60            | 1500         | 1000/1200       | 7500*2300*2800 | 29000         |
| 1800GF-W        | 50/60            | 1800         | 1000/1200       | 7900*2300*2800 | 20600         |



**Requirements for biogas**

1. Methane should be at least 55%
2. The biogas temperature should be between 0-60 °C
3. No impurity should be in the gas. Water in the gas should be less than 20g/Nm<sup>3</sup>.
4. Heat value should be at least 5500kcal/m<sup>3</sup>, if less than this value, the power of the engine will be declined.
5. Gas pressure should be 3-100KPa, if the pressure is less than 3KPa, booster fan is necessary.
6. The gas should be dehydrated and desulfurated. Make sure that there is no liquid in the gas. H<sub>2</sub>S < 200mg/Nm<sup>3</sup>

**Requirements for natural gas**

1. Methane should be at least 95%
2. The natural gas temperature should be between 0-60 °C
3. No impurity should be in the gas. Water in the gas should be less than 20g/Nm<sup>3</sup>.
4. Heat value should be at least 8500kcal/m<sup>3</sup>, if less than this value, the power of the engine will be declined.
5. Gas pressure should be 3-100KPa, if the pressure is less than 3KPa, booster fan is necessary.
6. The gas should be dehydrated and desulfurated. Make sure that there is no liquid in the gas. H<sub>2</sub>S < 200mg/Nm<sup>3</sup>

**沼气发动机对沼气的要求：**

- 1、甲烷含量不低于55%，
- 2、燃气温度不得低于0℃，不得高于60℃
- 3、燃气不含其它杂质（杂质粒度应小于5 μm）。水含量不得高于20g/Nm<sup>3</sup>
- 4、燃气热值≥5500kcal/m<sup>3</sup>，若燃用低热值燃气（热值<5500kcal/l），机组功率略微下降。
- 5、燃气进气压力3-100KPa；低于3KPa需增加燃气增压装置，高于100KPA需要减压装置
- 6、燃气必须经过脱硫、脱水处理。硫化氢 < 200mg/Nm<sup>3</sup>

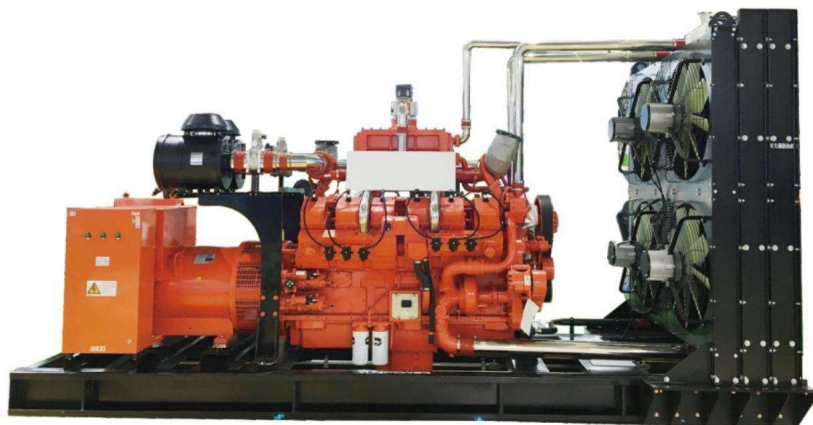
**天然气发动机对天然气的要求：**

- 1、甲烷含量不低于95%，
- 2、燃气温度不得低于0℃，不得高于60℃
- 3、燃气不含其它杂质（杂质粒度应小于5 μm）。水含量不得高于20g/Nm<sup>3</sup>
- 4、燃气热值≥8500kcal/m<sup>3</sup>，若燃用低热值燃气（热值<8500kcal/l），机组功率略微下降。
- 5、燃气进气压力3-100KPa；低于3KPa需增加燃气增压装置，高于100KPA需要减压装置
- 6、燃气必须经过脱硫、脱水处理。硫化氢 < 200mg/Nm<sup>3</sup>

| Item # 型号                                |                         | DT11A          | DT15A          | DT22A          | DT30A          |
|--|-------------------------|----------------|----------------|----------------|----------------|
| Cylinder # 缸数                            |                         | V6             | V8             | V12            | V16            |
| Aspiration 进气方式                          |                         | Turbo<br>涡轮增压  | Turbo<br>涡轮增压  | Turbo<br>涡轮增压  | Turbo<br>涡轮增压  |
| Bore x Stroke 缸径 x 行程 (mm)               |                         | 128x142        | 128x142        | 128x142        | 128x142        |
| Displacement 排量 (L)                      |                         | 10.96          | 14.62          | 21.93          | 29.24          |
| Oil Capacity 机油容量 (L)                    |                         | 25             | 27             | 57             | 78             |
| Coolant Capacity 冷却液容量 (L)               |                         | 19             | 20             | 23             | 26             |
| Oil Consumption 机油消耗率 (g/kw.h)           |                         | 2              | 2              | 2              | 2              |
| Compression Ratio 压缩比                    |                         | 10.5:1         | 10.5:1         | 10.5:1         | 10.5:1         |
| Prime power -Natural gas<br>天然气发动机额定功率   | kW/1500rpm              | 180            | 240            | 360            | 480            |
|  | kW/1800rpm              | 207            | 276            | 414            | 552            |
| Standby power -Natural gas<br>天然气发动机备用功率 | kW/1500rpm              | 198            | 264            | 396            | 528            |
|  | kW/1800rpm              | 227.7          | 303.6          | 455.4          | 607.2          |
| Genset output - Natural gas<br>天然气发电机组功率 | Prime 主用 (kW/1500rpm)   | 150            | 200            | 300            | 400            |
|  | Standby 备用 (kW/1500rpm) | 165            | 220            | 330            | 440            |
|  | Prime 主用 (kW/1800rpm)   | 180            | 220            | 350            | 450            |
|  | Standby 备用 (kW/1800rpm) | 198            | 242            | 385            | 495            |
| Prime power -Biogas<br>沼气发动机额定功率         | kW/1500rpm              | 162            | 216            | 324            | 432            |
|  | kW/1800rpm              | 186.3          | 248.4          | 372.6          | 496.8          |
| Standby power - Biogas<br>沼气发动机备用功率      | kW/1500rpm              | 178.2          | 237.6          | 356.4          | 475.2          |
|  | kW/1800rpm              | 204.93         | 273.24         | 409.86         | 546.48         |
| Genset output - Biogas<br>沼气发电机组功率       | Prime 主用 (kW/1500rpm)   | 140            | 200            | 300            | 400            |
|  | Standby 备用 (kW/1500rpm) | 154            | 220            | 330            | 440            |
|  | Prime 主用 (kW/1800rpm)   | 150            | 220            | 340            | 420            |
|  | Standby 备用 (kW/1800rpm) | 165            | 242            | 374            | 462            |
| Weight 重量 (kg)                           |                         | 904            | 1050           | 1575           | 2110           |
| Start method 启动方式                        |                         | Electric 电启动   | Electric 电启动   | Electric 电启动   | Electric 电启动   |
| Dimension 尺寸 (mm)                        |                         | 1251x1389x1288 | 1484x1389x1288 | 1717x1389x1288 | 1950x1389x1288 |



## 康明斯燃气发电机组 Cummins Gas Generator Sets



### Requirements for biogas: 对沼气的要求

- (1) The methane content should not be lower than 55%.
- (2) The Biogas temperature should be between 0–60°C.
- (3) No impurity should be in the gas. Water in the gas should be less than 20g/Nm<sup>3</sup>.
- (4) Heat value should be at least 5500kcal/m<sup>3</sup>, if less than this value, the power of the engine will be declined.
- (5) Gas pressure should be 3–100KPa, if the pressure is less than 3KPa, booster fan is necessary.
- (6) The gas should be dehydrated and desulfurized. Make sure that there is no liquid in the gas. H<sub>2</sub>S < 200mg/Nm<sup>3</sup>.

### Requirements for Natural gas: 对天然气的要求

- (1) The methane content should not be lower than 95%.
- (2) The natural gas temperature should be between 0–60°C.
- (3) No impurity should be in the gas. Water in the gas should be less than 20g/Nm<sup>3</sup>.
- (4) Heat value should be at least 8500kcal/m<sup>3</sup>, if less than this value, the power of the engine will be declined.
- (5) Gas pressure should be 3–100KPa, if the pressure is less than 3KPa, booster fan is necessary.
- (6) The gas should be dehydrated and desulfurized. Make sure that there is no liquid in the gas. H<sub>2</sub>S < 200mg/Nm<sup>3</sup>.

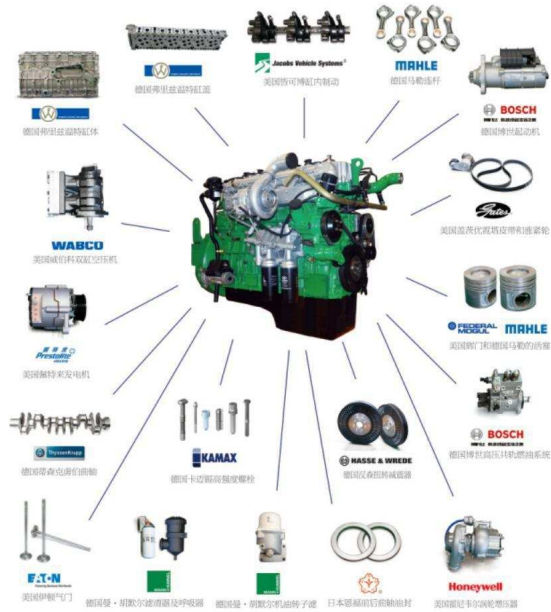
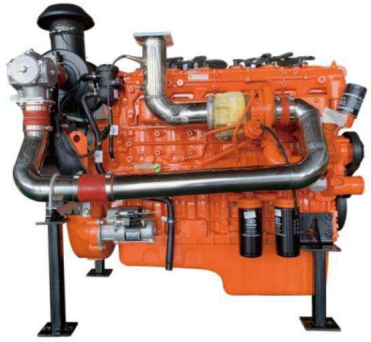
## Key Parameters of Cummins Gas Generator Set 参数表

| 型号 Model                  |  | BC-250GF                                    | BC-300GF       | BC-500GF                        |
|---------------------------|--|---|----------------|---------------------------------|
| 额定功率 (kW/KVA) Rated power |  | 250/312.5                                   | 300/375        | 500/600                         |
| 额定电流 (A) Rated current    |  | 450   | 540            | 900                             |
| 额定电压 (V) Rated Voltage    |  | 230/400                                     |                |                                 |
| 额定频率 (Hz) Rated Frequency |  | 50/60                                       |                |                                 |
| 尺寸 (mm) Dimension         |  | 3800*1700*2080                              | 3800*1780*2080 | 5100*2500*2200                  |
| 重量 (kg) Weight            |  | 3500  | 3800           | 6500                            |
| 发动机<br>Engine             | 型号 Model   | GTA19-G1                                    | GTA19-G2       | GTA38                           |
|                           | 类型 Type  | Water-cooled, 4-stroke, in-line             |                | Water-cooled, 4-stroke, V shape |
|                           | 额定功率 (kW/KVA) Rated Power                          | 300   | 360            | 550                             |
|                           | 额定转速 (rpm) Rated Speed                             | 1500/1800                                   |                |                                 |
|                           | 气缸编号 Cylinder No.                                  | 6   | 6              | 12                              |
|                           | 缸径*行程 (mm) Bore*Stroke                             | 159 x 159                                   |                |                                 |
|                           | 冷却方法 Cooling Method                                | Water-cooled                                |                |                                 |
|                           | 机油消耗量 (g/KWH) Oil Consumption                      | <1  | <1             | <1                              |
|                           | 沼气消耗量 (m <sup>3</sup> /h) Biogas Consumption       | 150   | 180            | 300                             |
|                           | 天然气消耗量 (m <sup>3</sup> /h) Natural gas Consumption | 75  | 90             | 150                             |
| 启动方法 Starting method      | 24V DC   |   |                |                                 |
| 品牌 Brand                  | Farrand  |   |                |                                 |
| 交流发电机<br>Alternator       | 型号 Model   | FLD250                                      | FLD300         | FLD500                          |
|                           | 额定功率 (kW/KVA) Rated Power                          | 250/312.5                                   | 300/375        | 500/600                         |
|                           | 电压调节 Voltage Regulation                            | ≤±1   |                |                                 |
|                           | 励磁方式 Excitation mode                               | Brushless, Self Excitation                  |                |                                 |
| 绝缘等级 Insulation Class     | H  |   |                |                                 |
| 控制系统<br>Control System    | 型号 Model   | SMARTGEN HGM6110N                           |                |                                 |
|                           | 工作电压 Working Voltage                               | DC8.0V to DC35.0V                           |                |                                 |
|                           | 外形尺寸 Overall Dimensions                            | 197 mm x 152 mm x 47mm                      |                |                                 |
|                           | 面板切口 Panel Cutout                                  | 186mm x 141mm                               |                |                                 |
|                           | 工作条件 Working Condition                             | Temperature: (-25~70)°C; Humidity: (20~90)% |                |                                 |
| 重量 Weight                 | 0.56kg   |   |                |                                 |



# 汉马燃气发电机组

CAMC Gas Generator Sets



## Project case 项目案例



## Key Parameters of CAMC Gas Generator Set 参数表

|  |   | BC-200GF                        | BC-250GF       |
|--|---|---------------------------------|----------------|
| 发动机<br>Engine                                      | 额定功率 (kW/KVA) Rated power                   | 200/250                         | 250/312.5      |
|  | 额定电流 (A) Rated current                      | 360                             | 450            |
|  | 额定电压 (V) Rated Voltage                      | 230/400                         |                |
|  | 额定频率 (Hz) Rated Frequency                   | 50/60                           |                |
|  | 尺寸 (mm) Dimension                           | 3300*1400*1830                  | 3300*1400*1850 |
|  | 重量 (kg) Weight                              | 3500                            | 3800           |
|  | 型号 Model                                    | CM6T28-G1                       | CM6T28-G2      |
|  | 类型 Type                                     | Water-cooled, 4-stroke, in-line |                |
|  | 额定功率 (kW/KVA) Rated Power                   | 255                             | 300            |
|  | 额定转速 (rpm) Rated Speed                      | 1500/1800                       |                |
| 气缸编号 Cylinder No.                                  | 6   | 6                               |                |
| 缸径*行程 (mm) Bore*Stroke                             | 128 x 153                                   |                                 |                |
| 排量 (L) Displacement                                | 11.81                                       |                                 |                |
| 冷却方法 Cooling Method                                | Water-cooled                                |                                 |                |
| 机油消耗量 (g/KWH) Oil Consumption                      | <1  | <1                              |                |
| 沼气消耗量 (m <sup>3</sup> /h) Biogas Consumption       | 120   | 150                             |                |
| 天然气消耗量 (m <sup>3</sup> /h) Natural gas Consumption | 60  | 75                              |                |
| 启动方法 Starting method                               | 24V DC                                      |                                 |                |
| 品牌 Brand   | Farrand                                     |                                 |                |
| 型号 Model   | FLD200                                      | FLD250                          |                |
| 额定功率 (kW/KVA) Rated Power                          | 200/250                                     | 250/312.5                       |                |
| 电压调节 Voltage Regulation                            | ≤±1   |                                 |                |
| 励磁方式 Excitation mode                               | Brushless, Self Excitation                  |                                 |                |
| 绝缘等级 Insulation Class                              | H   |                                 |                |
| 型号 Model   | SMARTGEN HGM6110N                           |                                 |                |
| 工作电压 Working Voltage                               | DC8.0V to DC35.0V                           |                                 |                |
| 外形尺寸 Overall Dimensions                            | 197 mm x 152 mm x 47mm                      |                                 |                |
| 面板切口 Panel Cutout                                  | 186mm x 141mm                               |                                 |                |
| 工作条件 Working Condition                             | Temperature: (-25~70)°C; Humidity: (20~90)% |                                 |                |
| 重量 Weight  | 0.56kg                                      |                                 |                |
| 交流发电机<br>Alternator                                |   |                                 |                |
| 控制系统<br>Control System                             |   |                                 |                |

部分案例 / Part case



俄罗斯项目  
Russian project



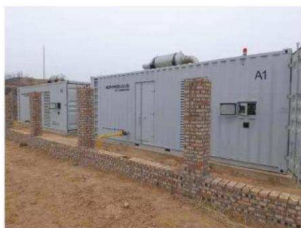
非洲坦桑项目  
Tanzania project in africa



哈萨克斯坦项目  
Kazakhstan project



吉林华润燃气项目  
Jilin china resources gas project



吕梁兴县项目  
Lvliang xingxian project



新疆沙雅项目  
Xinjiang shaya project



俄罗斯某电站项目  
A power plant project in Russia



菲律宾某污水厂电站项目  
A sewage treatment plant power station project in the philippines



新疆轮台某天然气项目  
A natural gas project in luntai, xinjiang



台湾某沼气发电项目  
A biogas power generation project in taiwan



内蒙古某砖井站项目  
Inner mongolia brick well station project



哈萨克斯坦某天然气电站项目  
A natural gas power plant project in kazakhstan

部分案例 / Part case



贵州铜仁养牛场项目  
Guizhou tongren cattle farm



惠州广丰农牧项目  
Huizhou guangfeng agriculture and animal husbandry



尼日利亚项目  
Nigeria project



武汉江夏项目  
Wuhan Jiangxia Project



朱老六豆腐乳厂项目  
Zhulao Liu fermented bean curd factory project



泰安污水厂项目  
Tai'an sewage treatment plant



安徽淮南潘集沼气发电项目  
Anhui huainan panji biogas power generation



湖北荆山某餐厨沼气项目  
A kitchen biogas project in jingshan, hubei



泰安污水厂项目  
Tai'an sewage treatment plant



吉林华润燃气项目  
Jilin china resources gas project



吕梁兴县项目  
Lvliang xingxian project



新疆沙雅项目  
Xinjiang shaya project

## 控制系统

### CONTROL SYSTEM

#### AUTOMATIC STARTING CONTROL PANEL WHEN THE POWER GRID IS UNDER-VOLTAGE OR FAILS

#### 无市电（失压）自启动控制屏

- ★ Manual/Stop/manual selection function
  - ★ Start-up delay (3-5 seconds, adjustable)
  - ★ Stop delay (0-270 seconds, adjustable)
  - ★ Triple automatic starting function
  - ★ Alarm indication: under/over speed, malfunction, low oil pressure, over current, failed starting, high water temperature, high oil temperature advance alarm, power-cut
  - ★ Protective function: under/over speed, failed starting, low oil pressure, high water temperature, high oil temperature, over current.
- ★ 手动/停止/手动功能选择
  - ★ 启动延时 (3-5秒, 可调)
  - ★ 停机延时 (0-270秒, 可调)
  - ★ 三次自动启动功能
  - ★ 报警指示: 低/超速、故障、油压低、过流、启动失败、高水温、高油温预报警, 停电停车。
  - ★ 保护功能: 低/超速、启动失败、低油压、高水温、高油温、过流保护。



#### AUTOMATIC TRANSFER SWITCH

#### 自动切换开关

For home and other circumstances, Automatic Transfer Switch (ATS) is essential. ATS can automatically transfer load between the main power and the emergency (generator set) without operator. When the main power fails or voltage drops below 80% of normal voltage, the ATS will start the emergency generator set after a preset time of 0-10 seconds (adjustable) and transfer the load to the emergency power (generator set). On the contrary, when the main power recovers to normal, the ATS transfers the load from the emergency power (generator set) to the main power, and then stops the emergency power (generator set).

对于家庭建筑或其他环境要求的场合下, 双电源自动切换开关装置 (ATS) 是必要的。ATS可以在无人操作的情况下实现主电源 (市电) 和应急电源 (发电机组) 之间的切换。当主电源电压或电压低于正常电压时, ATS自动将在0-10秒 (可调节) 内启动应急发电机组, 然后将负载用电从主电源切换到应急电源 (发电机组), 发电机组给负载供电。反之, 当是市电源恢复正常时, ATS自动将负载用电从应急电源 (发电机组) 切换到主电源上, 然后停止应急电源 (发电机组)。



#### Africa

Japan  
Korea  
KZ Kazakhstan  
Mongolia

#### Africa

Morocco  
Libya  
Saudi Arabia  
Sudan  
Nigeria  
Uganda  
Tanzania  
Zambia  
Mozambique  
South Africa  
Egypt

#### Southeast Asia

Malaysia  
Thailand  
Philippines  
Maldives  
Indonesia  
Laos  
Myanmar

#### South America

Uruguay  
Chile  
Paraguay  
Bolivia  
Peru  
Ecuador  
Venezuela

#### Europe

Russia  
Norway  
Bulgaria  
Greece

#### North America


Nicaragua  
Dominica  
Mexico  
America  
Canada


#### Oceania


Papua New Guinea  
Australian  
New Zealand

# WHY CHOSE US




 厂家直销  
Factory direct sales

 价格合理  
Reasonable price

 雄厚实力  
Strong strength

 权威认证  
Authoritative certification

 性能优越  
Superior performance

 服务周到  
Considerate service

## 厂家直销 Factory direct sales

生产销售一步进行 品质更有保障  
Production and sales are carried out in one step to ensure better quality

## 价格合理 Reasonable price

多年厂家直销 工厂直供价  
Years of factory direct sales, factory direct supply price

## 雄厚实力 Strong strength

十余年厂家生产加工经验  
More than ten years of production and processing experience from manufacturers

## 权威认证 Authoritative certification

通过ISO9001和ISO 14001 质量管理标准认证  
Certified according to ISO9001 and ISO 14001 quality management standards

## 性能优越 Superior performance

重点打造研发中心，为产品节能、环保、安全等方面提供技术保障  
Focus on building the R&D center to provide technical support for product energy conservation, environmental protection, safety, and other aspects

## 服务周到 Considerate service

专业的售后服务团队为你解决疑问  
Professional after-sales service team to solve your questions



Our common choice  
我们共同的选择



24X7

小时全年服务应答体系  
7x24-hour annual service response system



48<sub>h</sub>

小时内到达客户现场  
Arrive at customer site within 48 hours



24<sub>h</sub>

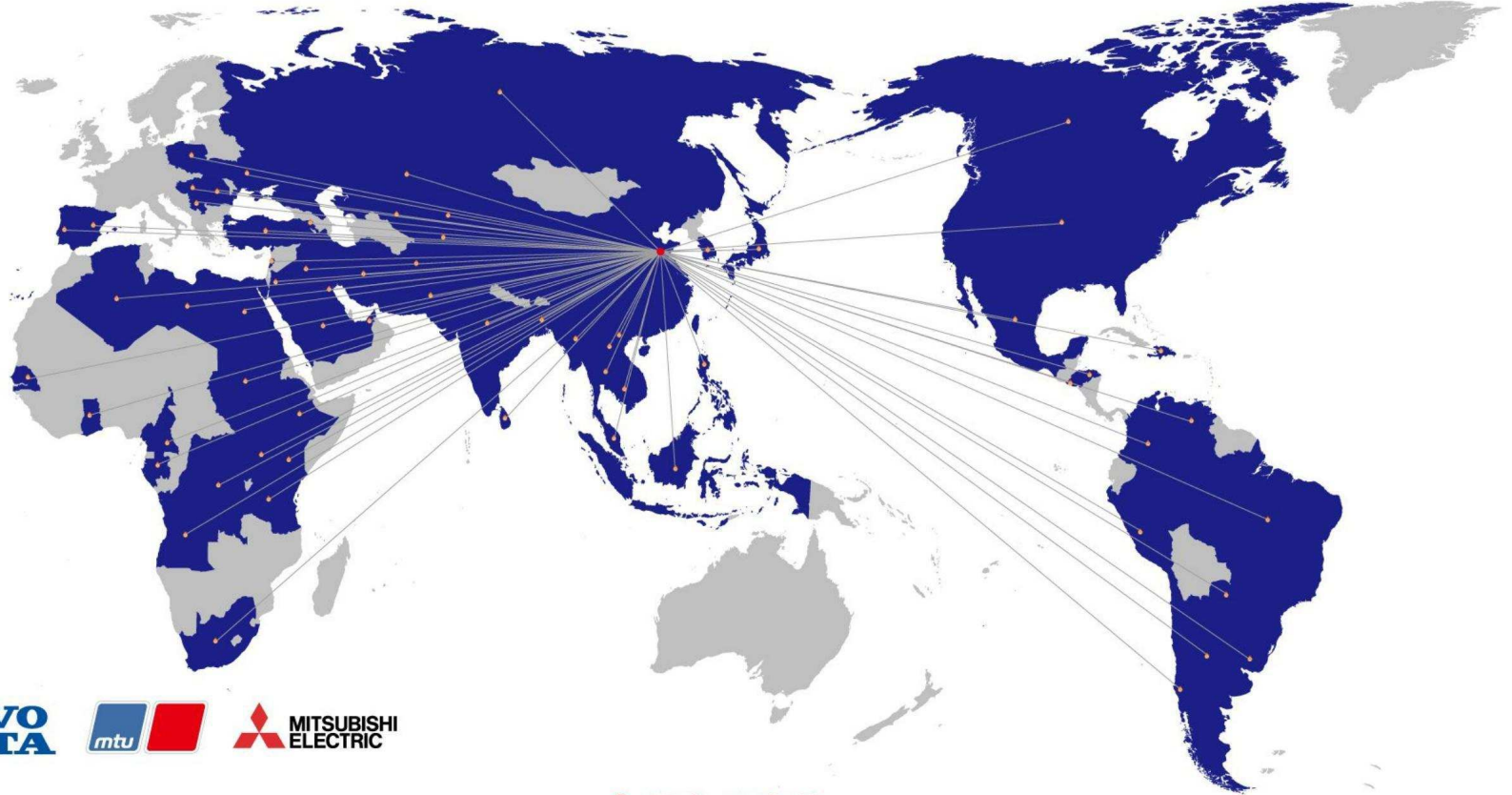
小时内回访跟踪服务  
24-hour follow-up and tracking service

## 合作客户

Cooperative Customers

坚实而完美的服务，  
让公司的营销网络覆盖全国，产品远销海外

SOLID AND PERFECT SERVICE,  
MAKE THE COMPANY'S MARKETING  
NETWORK COVER THE WHOLE COUNTRY,  
PRODUCTS ARE TO OVERSEAS



## 优质供应商

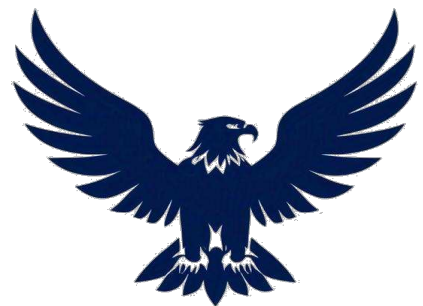
High quality supplier



## 服务与支持

Service And Support

- 全面的售前支持  
Comprehensive pre sales support
- 严格的生产过程控制  
Strict production process control
- 人员培训  
Personnel training
- 专业的售中服务  
Professional delivery service
- 设备调试安装  
Equipment commissioning and installation
- 完善的售后服务  
Perfect after-sale service



**DONG HANG**

**Address:** Xiangjiang Kechuang Building,  
Dongchan District, Liaocheng City, Shandong

**Tell :** +86153157158951.5

**Email :** x489169@gmail.com

**Company website :** <https://lcdonghang.com/>