



DONG HANG

聊城东杭国际贸易有限公司

DONGHANG PUMP

Explosion-proof fluid conveying  
equipment series booklet

Liaocheng DongHang International Trade Co., Ltd.

Address: Xiangjiang Kechuang Building,  
Dongchan District, Liaocheng City, Shandong

Tell : +8615315715895

Email : x489169@gmail.com

Company website : <https://lcdonghang.com/>

DONG HANG

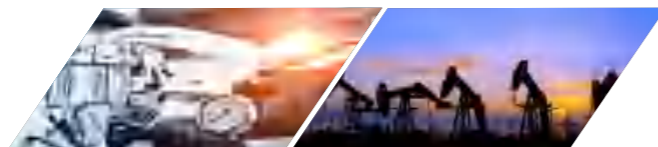




## COMPANY profile 企业简介

公司致力于防爆流体设备制造。如防爆排污泵、防爆控制柜防爆化工泵、防爆自吸滑片泵、直流防爆泵、防爆管道泵、防爆自吸离心泵、防爆油水循环泵、防爆磁力泵、防爆齿轮泵等产品。特别是我司自主研发的防爆尿素泵(专利号201920511028.X)防爆型潜液电泵ExdIICT4Gb与国内大型加油机厂商、尿素加注机厂商、污水处理厂、钢铁厂、化工厂等单位配套。

The company is dedicated to the manufacture of explosion-proof fluid equipment, including explosion-proof sewage pumps, explosion-proof control cabinets, explosion-proof chemical pumps, explosion-proof self-priming vane pumps, DC explosion-proof pumps, explosion-proof pipeline pumps, explosion-proof self-priming centrifugal pumps, explosion-proof oil-water circulation pumps, explosion-proof magnetic pumps, and explosion-proof gear pumps. In particular, our self-developed explosion-proof urea pump (patent number 201920511028.X), an explosion-proof submersible electric pump ExdIICT4Gb, is supplied to major domestic fuel dispenser manufacturers, urea filling machine manufacturers, sewage treatment plants, steel mills, and chemical plants.



我们的产品通过了ISO9001国际质量体系认证、COST防爆认证、CCRITC防爆认证、MA认证、CE认证、CCC认证SGS认证等所有产品生产严格遵照GB、GB/T、ISO等标准。

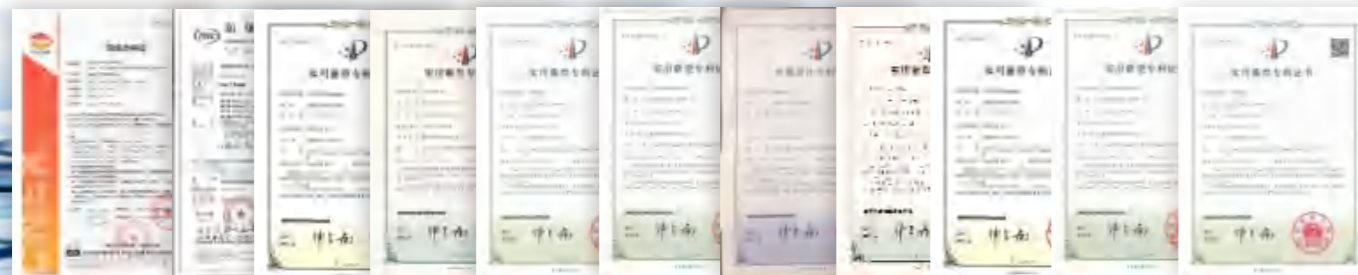
公司下设浙江凯力防爆电机有限公司，为海湾泵业提供了高效、节能环保的YBX4三相防爆电机、YBX4单相防爆电机。先进的工艺、精湛的技术、完善的检测、不断的创新给公司的高速发展提供了有力保障。

Our products have passed ISO9001 international quality system certification, COST explosion-proof certification, CCRITC explosion-proof certification, MA certification, CE certification, CCC certification, SGS certification, and other certifications. All product manufacturing strictly adheres to GB, GB/T, ISO, and other standards.

Our company has a subsidiary, Zhejiang Kaili Explosion-proof Motor Co., Ltd., which provides Haiwan Pump Industry with high-efficiency, energy-saving, and environmentally friendly YBX4 three-phase explosion-proof motors and YBX4 single-phase explosion-proof motors. Advanced processes, sophisticated technology, comprehensive testing, and continuous innovation provide strong support for the company's rapid development.

QUALIFICATION HONOR

资质荣誉



# CONTENTS

## 目录

|  |              |
|--|--------------|
| HWQB Explosion-proof Submersible Pump CT4 Series.....            | 1-6          |
| HWQ Explosion-proof Submersible Pump BT4 Series.....             | 7-10         |
| KYB Explosion-proof Self-priming Vane Pump Series.....           | 11           |
| DKYB Diesel Engine Driven Self-Priming Vane Pump Series.....     | 12           |
| DYB Explosion-proof Electric Oil Pump Series.....                | 13           |
| HWZ DC Explosion-proof Pump Series.....                          | 14           |
| HWX Explosion-proof Oil-Water High-Pressure Pump Series.....     | 15           |
| HWB Explosion-proof Oil-Water Circulation Pump Series.....       | 16           |
| CYZ Explosion-proof Self-priming Centrifugal Pump Series.....    | 17           |
| YG/GW/LW Explosion-proof Pipeline Pump Series.....               | 18           |
| CQB Magnetic Centrifugal Pump Series.....                        | 19           |
| ZCQ Magnetic Self-Priming Pump Series.....                       | 20           |
| RY Explosion-proof Thermal Oil Pump Series.....                  | 21           |
| WCB Explosion-proof Gear Oil Pump Series.....                    | 22           |
| KCB Gear Oil Pump Series.....                                    | 23           |
| KCB Stainless Steel Gear Oil Pump Series.....                    | 24           |
| G Explosion-proof Screw Pump Series.....                         | 25           |
| IH Chemical Pumps.....   | 26           |
| FYH/FYC Submersible Chemical Pumps.....                          | 27           |
| QBK Pneumatic Diaphragm Pump Series .....                        | 28           |
| HW Stainless Steel Explosion-proof Self-priming Pump Series..... | 29           |
| SB Explosion-proof Oil Drum Pump Series .....                    | 30           |
| YBX4 Three-Phase Explosion-Proof Motor Series.....               | 31           |
| YBX4 Single-Phase Explosion-Proof Motor Series.....              | 32           |
| KLBX Explosion-proof Control Cabinet Series.....                 | 33           |
| Company Performance.....   | Second cover |

## HWQB系列防爆型潜液电泵

HWQB series explosion-proof submersible pumps



防爆标志: Ex d IIC T4 Gb  
防护等级: IP68  
电压: 220V/380V/660V/1140V

Explosion-proof mark: Ex d IIC T4 Gb  
Protection grade: IP68  
Voltage: 220V/380V/660V/1140V.



防爆标志: Ex d IIC T4 Gb  
防护等级: IP68  
电压: 220V/380V/660V/1140V

Explosion-proof mark: Ex d IIC T4 Gb  
Protection grade: IP68  
Voltage: 220V/380V/660V/1140V.

### 产品概述 Product overview

HWQB-□-□系列防爆型潜液电泵（以下简称潜液泵）采用全不锈钢/铸铁设计，由潜液泵、密封、电动机三部分组成。电机位于潜液泵上部，为单相或者三相异步电动机结构，液泵位于电动机下部，采用独特的单、双流道式多级叶轮结构，大大提高了液体的通过能力。外形采用精密铸造和不锈钢机筒，美观大方，具有防锈、耐腐蚀、无污染等特点。

HWQB-□-□series explosion-proof submersible pump (hereinafter referred to as submersible pump) adopts all stainless steel/cast iron design and consists of submersible pump, seal and motor. The motor is located in the upper part of the submersible pump, which is a single-phase or three-phase asynchronous motor structure, and the liquid pump is located in the lower part of the motor, which adopts a unique single-channel and double-channel multistage impeller structure, greatly improving the liquid passing capacity. The appearance adopts precision casting and stainless steel barrel, which is beautiful and generous, and has the characteristics of rust prevention, corrosion resistance and pollution-free.

### 适用场合 Applicable occasions

- (1) 工厂商业严重污染废液的排放。
  - (2) 易燃易爆产所使用如油站化工厂
  - (3) 城市污水处理厂排液系统。
  - (4) 人防系统排液站。
  - (5) 医院、宾馆的污水排放。
  - (6) 市政工程、建筑工地。
  - (7) 勘探、矿山配套附机。
  - (8) 农村沼气池农田灌溉。
- (1) Discharge of seriously polluted waste liquid from factory business.
  - (2) inflammable and explosive products are used, such as oil station chemical plants.
  - (iii) Drainage system of urban sewage treatment plant.
  - (4) civil air defense system drainage station.
  - (5) Sewage discharge from hospitals and hotels.
  - (6) Municipal engineering and construction sites.
  - (7) exploration and mining equipment.
  - (8) Farmland irrigation with biogas digesters in rural areas.

## HWQB系列防爆型潜液电泵

HWQB series explosion-proof submersible pumps



防爆标志: Ex d IIC T4 Gb  
防护等级: IP68  
电压: 220V/380V/660V/1140V

Explosion-proof mark: Ex d IIC T4 Gb  
Protection grade: IP68  
Voltage: 220V/380V/660V/1140V.

### 执行标准 executive standard

GB 3836.1-2010 爆炸性环境第1部分: 设备通用要求  
GB 3836.2-2010 爆炸性环境第2部分: 由隔爆外壳“d”保护的电气设备  
GB 25286.1-2010 爆炸性环境用非电气设备 第1部分: 基本方法和要求  
GB 25286.3-2010 爆炸性环境用非电气设备 第3部分: 隔爆外壳型“d”  
GB/T4208-2017 外壳防护等级 (IP代码)

GB 3836.1-2010 Explosive environment Part 1: General requirements for equipment  
GB 3836.2-2010 Explosive atmosphere Part 2: Equipment protected by flameproof enclosure "D"  
GB 25286.1-2010 Non-electrical equipment for explosive atmospheres Part 1: Basic methods and requirements  
GB 25286.3-2010 Non-electrical equipment for explosive atmospheres Part 3: Flameproof enclosure type "D"  
GB/T4208-2017 Enclosure protection level (IP code)

### 使用条件 Conditions of use

- (1) 温度不超过40℃个质中含有固体杂质的体积比不超过0.1%粒度不大于0.2mm。如超过40℃液体需选择耐高温机械密封电缆材料可选择不锈钢304 316;
  - (2) 电泵可整套潜入液体下，可立卧使用。但液体不得低于电泵叶轮以下，以免造成电泵出液量不足，电机冷却不足造成烧机。
  - (3) 如输送污物时，需在电泵叶轮底板加装过滤网，以免叶轮内部造成堵塞，不使用时应及时清理杂物。
- (1) The temperature does not exceed 40℃, and the volume ratio of solid impurities in S is not more than 0.1%, and the particle size is not more than 0.2mm. If the temperature exceeds 40℃, the cable material with high temperature resistance mechanical seal should be selected, and stainless steel 304 316 can be selected;
  - (2) The whole set of electric pump can be submerged under the liquid, and can be used vertically and horizontally. However, the liquid shall not be lower than the impeller of the electric pump, so as to avoid insufficient liquid output of the electric pump and insufficient cooling of the motor, which will cause the machine to burn.
  - (3) When conveying dirt, it is necessary to install a filter screen on the bottom plate of the electric pump impeller to avoid blockage inside the impeller. When not in use, clean up the sundries in time.

### 产品型号 product model

HWQB-□-□

功率 power: (90kW、75kW、55kW、45kW、37kW、30kW、22kW、18.5kW、15kW、11kW、7.5kW、5.5kW、4kW、3kW、2.2kW、1.5kW、1.1kW)

口径size: (600mm、500mm、400mm、350mm、300mm、250mm、200mm、150mm、100mm、80mm、65mm、50mm、40mm、25mm)

防爆型潜液电泵 Explosion-proof submersible pump

HWQB系列防爆型潜液电泵

HWQB series explosion-proof submersible pumps



性能参数 performance parameter

| 防爆等级BT4 /CT4<br>Explosion-proof grade BT4 /Ct4 |                                |                |                  |                   |                     |                     |
|--|--------------------------------|----------------|------------------|-------------------|---------------------|---------------------|
| 型号 Model                                       | 额定流量 Flow<br>m <sup>3</sup> /h | 额定扬程 Head<br>m | 额定功率 Power<br>KW | 额定电压 Voltage<br>V | 同步转速 Speed<br>r/min | 配管内径 Size inch<br>寸 |
| HWQB50-10-10-0.75                              | 10                             | 10             | 0.75             | 380               | 2900                | 2                   |
| HWQB25-5-22-1.1                                | 5                              | 22             | 1.1              | 380               | 2900                | 1                   |
| HWQB32-6-20-1.1                                | 6                              | 20             | 1.1              | 380               | 2900                | 1.2                 |
| HWQB40-7-18-1.1                                | 7                              | 18             | 1.1              | 380               | 2900                | 1.5                 |
| HWQB50-10-12-1.1                               | 10                             | 12             | 1.1              | 380               | 2900                | 2                   |
| HWQB65-15-9-1.1                                | 15                             | 9              | 1.1              | 380               | 2900                | 2.5                 |
| HWQB40-8-18-1.5                                | 8                              | 18             | 1.5              | 380               | 2900                | 1.5                 |
| HWQB50-10-15-1.5                               | 10                             | 15             | 1.5              | 380               | 2900                | 2                   |
| HWQB65-20-10-1.5                               | 20                             | 10             | 1.5              | 380               | 2900                | 2.5                 |
| HWQB80-40-7-1.5                                | 40                             | 7              | 1.5              | 380               | 2900                | 3                   |
| HWQB100-50-5-1.5                               | 50                             | 5              | 1.5              | 380               | 2900                | 4                   |
| HWQB40-8-24-2.2                                | 8                              | 24             | 2.2              | 380               | 2900                | 1.5                 |
| HWQB50-9-22-2.2                                | 9                              | 22             | 2.2              | 380               | 2900                | 2                   |
| HWQB50-15-20-2.2                               | 15                             | 20             | 2.2              | 380               | 2900                | 2                   |
| HWQB65-20-15-2.2                               | 20                             | 15             | 2.2              | 380               | 2900                | 2.5                 |
| HWQB80-40-10-2.2                               | 40                             | 10             | 2.2              | 380               | 2900                | 3                   |
| HWQB100-50-7-2.2                               | 50                             | 7              | 2.2              | 380               | 2900                | 4                   |
| HWQB50-15-25-3                                 | 15                             | 25             | 3                | 380               | 2900                | 2                   |
| HWQB65-25-18-3                                 | 25                             | 18             | 3                | 380               | 2900                | 2.5                 |
| HWQB65-37-13-3                                 | 37                             | 13             | 3                | 380               | 2900                | 2.5                 |
| HWQB80-45-12-3                                 | 45                             | 12             | 3                | 380               | 2900                | 3                   |
| HWQB80-43-13-3                                 | 43                             | 13             | 3                | 380               | 2900                | 3                   |
| HWQB100-60-9-3                                 | 60                             | 9              | 3                | 380               | 2900                | 4                   |
| HWQB50-15-30-4                                 | 15                             | 30             | 4                | 380               | 2900                | 2                   |
| HWQB65-25-25-4                                 | 25                             | 25             | 4                | 380               | 2900                | 2.5                 |
| HWQB80-40-16-4                                 | 40                             | 16             | 4                | 380               | 2900                | 3                   |
| HWQB100-60-12-4                                | 60                             | 12             | 4                | 380               | 2900                | 4                   |
| HWQB100-80-10-4                                | 80                             | 10             | 4                | 380               | 2900                | 4                   |
| HWQB50-15-40-5.5                               | 15                             | 40             | 5.5              | 380               | 2900                | 2                   |
| HWQB65-25-30-5.5                               | 25                             | 30             | 5.5              | 380               | 2900                | 2.5                 |
| HWQB80-40-22-5.5                               | 40                             | 22             | 5.5              | 380               | 2900                | 3                   |
| HWQB100-60-18-5.5                              | 60                             | 18             | 5.5              | 380               | 2900                | 4                   |
| HWQB150-120-8-5.5                              | 120                            | 8              | 5.5              | 380               | 2900                | 6                   |
| HWQB50-15-50-7.5                               | 15                             | 50             | 7.5              | 380               | 2900                | 2                   |
| HWQB65-25-40-7.5                               | 25                             | 40             | 7.5              | 380               | 2900                | 2.5                 |
| HWQB80-40-28-7.5                               | 40                             | 28             | 7.5              | 380               | 2900                | 3                   |
| HWQB100-65-22-7.5                              | 65                             | 22             | 7.5              | 380               | 2900                | 4                   |
| HWQB150-100-10-7.5                             | 100                            | 10             | 7.5              | 380               | 2900                | 6                   |

HWQB系列防爆型潜液电泵

HWQB series explosion-proof submersible pumps

性能参数 performance parameter

| 防爆等级BT4 /CT4<br>Explosion-proof grade BT4 /Ct4 |                                |                |                  |                   |                     |                     |
|--|--------------------------------|----------------|------------------|-------------------|---------------------|---------------------|
| 型号 Model                                       | 额定流量 Flow<br>m <sup>3</sup> /h | 额定扬程 Head<br>m | 额定功率 Power<br>KW | 额定电压 Voltage<br>V | 同步转速 Speed<br>r/min | 配管内径 Size inch<br>寸 |
| HWQB50-20-55-11                                | 20                             | 55             | 11               | 380               | 2900                | 2                   |
| HWQB65-30-40-11                                | 30                             | 40             | 11               | 380               | 2900                | 2.5                 |
| HWQB80-60-30-11                                | 60                             | 30             | 11               | 380               | 2900                | 3                   |
| HWQB100-80-25-11                               | 80                             | 25             | 11               | 380               | 2900                | 4                   |
| HWQB150-100-20-11                              | 100                            | 20             | 11               | 380               | 2900                | 6                   |
| HWQB150-120-15-11                              | 120                            | 15             | 11               | 380               | 2900                | 6                   |
| HWQB200-180-11-11                              | 180                            | 11             | 11               | 380               | 2900                | 8                   |
| HWQB50-20-70-15                                | 20                             | 70             | 15               | 380               | 2900                | 2                   |
| HWQB65-30-60-15                                | 30                             | 60             | 15               | 380               | 2900                | 2.5                 |
| HWQB80-60-40-15                                | 60                             | 40             | 15               | 380               | 2900                | 3                   |
| HWQB100-80-35-15                               | 80                             | 35             | 15               | 380               | 2900                | 4                   |
| HWQB150-100-30-15                              | 100                            | 30             | 15               | 380               | 2900                | 6                   |
| HWQB150-120-25-15                              | 120                            | 25             | 15               | 380               | 2900                | 6                   |
| HWQB200-180-15-15                              | 180                            | 15             | 15               | 380               | 2900                | 8                   |
| HWQB50-20-80-18.5                              | 20                             | 80             | 18.5             | 380               | 2900                | 2                   |
| HWQB65-30-68-18.5                              | 30                             | 68             | 18.5             | 380               | 2900                | 2.5                 |
| HWQB80-60-45-18.5                              | 60                             | 45             | 18.5             | 380               | 2900                | 3                   |
| HWQB100-80-40-18.5                             | 80                             | 40             | 18.5             | 380               | 2900                | 4                   |
| HWQB150-100-36-18.5                            | 100                            | 36             | 18.5             | 380               | 2900                | 6                   |
| HWQB200-180-18-18.5                            | 180                            | 18             | 18.5             | 380               | 2900                | 8                   |
| HWQB50-20-90-22                                | 20                             | 90             | 22               | 380               | 2900                | 2                   |
| HWQB65-30-75-22                                | 30                             | 75             | 22               | 380               | 2900                | 2.5                 |
| HWQB80-60-50-22                                | 60                             | 50             | 22               | 380               | 2900                | 3                   |
| HWQB100-80-45-22                               | 80                             | 45             | 22               | 380               | 2900                | 4                   |
| HWQB150-100-40-22                              | 100                            | 40             | 22               | 380               | 2900                | 6                   |
| HWQB200-200-20-22                              | 200                            | 20             | 22               | 380               | 2900                | 8                   |

| 防爆等级CT4/IP68<br>Ex Grade CT4/IP68 |                                |                |                  |                   |                     |                     |
|-----------------------------------|--------------------------------|----------------|------------------|-------------------|---------------------|---------------------|
| 型号 Model                          | 额定流量 Flow<br>m <sup>3</sup> /h | 额定扬程 Head<br>m | 额定功率 Power<br>KW | 额定电压 Voltage<br>V | 同步转速 Speed<br>r/min | 配管内径 Size inch<br>寸 |
| HWQB80-80-13-5.5                  | 80                             | 13             | 5.5              | 380               | 1450                | 3                   |
| HWQB100-110-10-5.5                | 110                            | 10             | 5.5              | 380               | 1450                | 4                   |
| HWQB150-150-7-5.5                 | 150                            | 7              | 5.5              | 380               | 1450                | 6                   |
| HWQB80-80-20-7.5                  | 80                             | 20             | 7.5              | 380               | 1450                | 3                   |
| HWQB100-100-15-7.5                | 100                            | 15             | 7.5              | 380               | 1450                | 4                   |
| HWQB150-145-9-7.5                 | 145                            | 9              | 7.5              | 380               | 1450                | 6                   |
| HWQB200-250-6-7.5                 | 250                            | 6              | 7.5              | 380               | 1450                | 8                   |
| HWQB100-100-25-11                 | 100                            | 25             | 11               | 380               | 1450                | 4                   |

## HWQB系列防爆型潜液电泵

HWQB series explosion-proof submersible pumps



### 性能参数 performance parameter

| 防爆等级BT4 /CT4<br>Ex Grade CT4/IP68 Four-Pole Motor |                   |                |                  |                   |                     |                     |
|---|-------------------|----------------|------------------|-------------------|---------------------|---------------------|
| 型号 Model  | 额定流量 Flow<br>m³/h | 额定扬程 Head<br>m | 额定功率 Power<br>KW | 额定电压 Voltage<br>V | 同步转速 Speed<br>r/min | 配管内径 Size inch<br>寸 |
| HWQB150-180-11-11                                 | 180               | 11             | 11               | 380               | 1450                | 6                   |
| HWQB200-300-7-11                                  | 300               | 7              | 11               | 380               | 1450                | 8                   |
| HWQB250-400-5-11                                  | 400               | 5              | 11               | 380               | 1450                | 10                  |
| HWQB100-100-30-15                                 | 100               | 30             | 15               | 380               | 1450                | 4                   |
| HWQB150-200-15-15                                 | 200               | 15             | 15               | 380               | 1450                | 6                   |
| HWQB200-250-11-15                                 | 250               | 11             | 15               | 380               | 1450                | 8                   |
| HWQB250-500-5-15                                  | 500               | 5              | 15               | 380               | 1450                | 10                  |
| HWQB100-100-35-18.5                               | 100               | 35             | 18.5             | 380               | 1450                | 4                   |
| HWQB150-180-20-18.5                               | 180               | 20             | 18.5             | 380               | 1450                | 6                   |
| HWQB200-250-15-18.5                               | 250               | 15             | 18.5             | 380               | 1450                | 8                   |
| HWQB250-500-7-18.5                                | 500               | 7              | 18.5             | 380               | 1450                | 10                  |
| HWQB300-650-5-18.5                                | 650               | 5              | 18.5             | 380               | 1450                | 12                  |
| HWQB100-100-40-22                                 | 100               | 40             | 22               | 380               | 1450                | 4                   |
| HWQB150-200-22-22                                 | 200               | 22             | 22               | 380               | 1450                | 6                   |
| HWQB200-300-16-22                                 | 300               | 16             | 22               | 380               | 1450                | 8                   |
| HWQB250-500-9-22                                  | 500               | 9              | 22               | 380               | 1450                | 10                  |
| HWQB300-650-7-22                                  | 650               | 7              | 22               | 380               | 1450                | 12                  |
| HWQB100-120-45-30                                 | 120               | 45             | 30               | 380               | 1450                | 4                   |
| HWQB150-180-30-30                                 | 180               | 30             | 30               | 380               | 1450                | 6                   |
| HWQB200-250-22-30                                 | 250               | 22             | 30               | 380               | 1450                | 8                   |
| HWQB250-500-12-30                                 | 500               | 12             | 30               | 380               | 1450                | 10                  |
| HWQB250-600-9-30                                  | 600               | 9              | 30               | 380               | 1450                | 10                  |
| HWQB300-800-7-30                                  | 800               | 7              | 30               | 380               | 1450                | 12                  |
| HWQB350-1500-4-30                                 | 1500              | 4              | 30               | 380               | 1450                | 14                  |
| HWQB100-120-50-37                                 | 120               | 50             | 37               | 380               | 1450                | 4                   |
| HWQB150-200-35-37                                 | 200               | 35             | 37               | 380               | 1450                | 6                   |
| HWQB200-300-28-37                                 | 300               | 28             | 37               | 380               | 1450                | 8                   |
| HWQB200-350-25-37                                 | 350               | 25             | 37               | 380               | 1450                | 8                   |
| HWQB250-600-12-37                                 | 600               | 12             | 37               | 380               | 1450                | 10                  |
| HWQB300-800-9-37                                  | 800               | 9              | 37               | 380               | 1450                | 12                  |
| HWQB350-1000-6-37                                 | 1000              | 6              | 37               | 380               | 1450                | 14                  |
| HWQB350-1100-6-37                                 | 1100              | 6              | 37               | 380               | 980                 | 14                  |
| HWQB400-1300-6-37                                 | 1300              | 6              | 37               | 380               | 980                 | 16                  |
| HWQB100-100-57-45                                 | 100               | 57             | 45               | 380               | 1450                | 4                   |
| HWQB150-200-40-45                                 | 200               | 40             | 45               | 380               | 1450                | 6                   |
| HWQB200-300-32-45                                 | 300               | 32             | 45               | 380               | 1450                | 8                   |
| HWQB200-400-25-45                                 | 400               | 25             | 45               | 380               | 1450                | 8                   |
| HWQB250-600-15-45                                 | 600               | 15             | 45               | 380               | 1450                | 10                  |

## HWQB系列防爆型潜液电泵

HWQB series explosion-proof submersible pumps

### 性能参数 performance parameter

| 防爆等级BT4 /CT4<br>Ex Grade CT4/IP68 Four-Pole Motor |                   |                |                  |                   |                     |                     |
|---|-------------------|----------------|------------------|-------------------|---------------------|---------------------|
| 型号 Model  | 额定流量 Flow<br>m³/h | 额定扬程 Head<br>m | 额定功率 Power<br>KW | 额定电压 Voltage<br>V | 同步转速 Speed<br>r/min | 配管内径 Size inch<br>寸 |
| HWQB300-800-12-45                                 | 800               | 12             | 45               | 380               | 1450                | 12                  |
| HWQB350-1200-8-45                                 | 1200              | 8              | 45               | 380               | 1450                | 14                  |
| HWQB350-1300-8-45                                 | 1300              | 8              | 45               | 380               | 980                 | 14                  |
| HWQB400-1700-6-45                                 | 1700              | 6              | 45               | 380               | 980                 | 16                  |
| HWQB-100-100-65-55                                | 100               | 65             | 55               | 380               | 1450                | 4                   |
| HWQB150-180-50-55                                 | 180               | 50             | 55               | 380               | 1450                | 6                   |
| HWQB200-300-40-55                                 | 300               | 40             | 55               | 380               | 1450                | 8                   |
| HWQB200-400-30-55                                 | 400               | 30             | 55               | 380               | 1450                | 8                   |
| HWQB250-600-20-55                                 | 600               | 20             | 55               | 380               | 1450                | 10                  |
| HWQB300-800-15-55                                 | 800               | 15             | 55               | 380               | 1450                | 12                  |
| HWQB350-1000-10-55                                | 1000              | 10             | 55               | 380               | 1450                | 14                  |
| HWQB350-1100-10-55                                | 1100              | 10             | 55               | 380               | 980                 | 14                  |
| HWQB400-1300-8-55                                 | 1300              | 8              | 55               | 380               | 1450                | 16                  |
| HWQB400-1500-8-55                                 | 1500              | 8              | 55               | 380               | 980                 | 16                  |
| HWQB500-2200-5-55                                 | 2200              | 5              | 55               | 380               | 980                 | 20                  |
| HWQB100-120-75-75KW                               | 120               | 75             | 75               | 380               | 1450                | 4                   |
| HWQB150-200-60-75KW                               | 200               | 60             | 75               | 380               | 1450                | 6                   |
| HWQB200-350-45-75KW                               | 350               | 45             | 75               | 380               | 1450                | 8                   |
| HWQB250-600-25-75KW                               | 600               | 58             | 75               | 380               | 1450                | 10                  |
| HWQB300-800-20-75KW                               | 800               | 20             | 75               | 380               | 1450                | 12                  |
| HWQB350-1000-15-75KW                              | 1000              | 15             | 75               | 380               | 1450                | 14                  |
| HWQB350-1500-12-75KW                              | 1500              | 12             | 75               | 380               | 980                 | 14                  |
| HWQB400-1300-13-75KW                              | 1300              | 13             | 75               | 380               | 1450                | 16                  |
| HWQB400-1700-10-75KW                              | 1700              | 10             | 75               | 380               | 980                 | 16                  |
| HWQB500-2000-8-75KW                               | 2000              | 8              | 75               | 380               | 980                 | 20                  |
| HWQB500-2700-6-75KW                               | 2700              | 6              | 75               | 380               | 740                 | 20                  |
| HWQB100-120-85-90KW                               | 120               | 85             | 90               | 380               | 1450                | 4                   |
| HWQB150-200-70-90KW                               | 200               | 70             | 90               | 380               | 1450                | 6                   |
| HWQB200-300-60-90KW                               | 300               | 60             | 90               | 380               | 1450                | 8                   |
| HWQB200-400-50-90KW                               | 400               | 50             | 90               | 380               | 1450                | 8                   |
| HWQB250-600-30-90KW                               | 600               | 30             | 90               | 380               | 1450                | 10                  |
| HWQB300-800-25-90KW                               | 800               | 25             | 90               | 380               | 1450                | 12                  |
| HWQB350-1000-18-90KW                              | 1000              | 18             | 90               | 380               | 980                 | 14                  |
| HWQB400-1300-16-90KW                              | 1300              | 16             | 90               | 380               | 1450                | 16                  |
| HWQB400-1500-15-90KW                              | 1500              | 15             | 90               | 380               | 980                 | 16                  |
| HWQB500-2000-10-90KW                              | 2000              | 10             | 90               | 380               | 980                 | 20                  |
| HWQB500-2500-8-90KW                               | 2500              | 8              | 90               | 380               | 740                 | 20                  |
| HWQB600-3000-6-90KW                               | 3000              | 6              | 90               | 380               | 740                 | 24                  |
| HWQB350-3000-18-90KW                              | 3000              | 18             | 90               | 380               | 1450                | 24                  |

## HWQ系列防爆潜液泵

HWQ series explosion-proof submersible pump



防爆标志: Ex d IIB T4 Gb  
电压: 220V/380V/660V/1140V  
Explosion-proof mark: Ex d IIB T4 Gb  
Voltage: 220V/380V/660V/1140V.



防爆标志: Ex d IIB T4 Gb  
电压: 220V/380V/660V/1140V  
Explosion-proof mark: Ex d IIB T4 Gb  
Voltage: 220V/380V/660V/1140V.

### 产品概述 Product overview

HWQ-□系列防爆潜液泵（以下简称潜液泵）采用全不锈钢/铸铁设计，由液泵、密封、电动机三部分组成。电机位于潜液泵上部，为单相或者三相异步电动机结构，液泵位于电动机下部，采用独特的单、双流道式多级叶轮结构，大大提高了液体的通过能力。外形采用精密铸造和不锈钢机筒，美观大方，具有防锈、耐腐蚀、无污染等特点。

HWQ-□ port series explosion-proof submersible pump (hereinafter referred to as submersible pump) adopts all stainless steel/cast iron design, which consists of three parts: hydraulic pump, seal and motor. The motor is located in the upper part of the submersible pump, which is a single-phase or three-phase asynchronous motor structure, and the liquid pump is located in the lower part of the motor, which adopts a unique single-channel and double-channel multistage impeller structure, greatly improving the liquid passing capacity. The appearance adopts precision casting and stainless steel barrel, which is beautiful and generous, and has the characteristics of rust prevention, corrosion resistance and pollution-free.

### 适用场合 Applicable occasions

- (1) 工厂商业严重污染废液的排放。
  - (2) 易燃易爆炸产所使用如加油站化工厂
  - (3) 城市污水处理厂排液系统。
  - (4) 人防系统排液站。
  - (5) 医院、宾馆的污液排放。
  - (6) 市政工程、建筑工地。
  - (7) 勘探、矿山配套附机。
  - (8) 农村沼气池农田灌溉。
- (1) Discharge of seriously polluted waste liquid from factory business.  
(2) inflammable and explosive products are used, such as oil station chemical plants.  
(3) Drainage system of urban sewage treatment plant.  
(4) civil air defense system drainage station.  
(5) Sewage discharge from hospitals and hotels.  
(6) Municipal engineering and construction sites.  
(7) exploration and mining equipment.  
(8) Farmland irrigation with biogas digesters in rural areas.

## HWQ系列防爆潜液泵

HWQ series explosion-proof submersible pump

### 使用条件 Conditions of use

温度不超过40℃个质中含有固体杂质的体积比不超过0.1%粒度不大于0.2mm。如超过40℃液体需选择耐高温机械密封电缆材料可选择不锈钢304 316

- (2) 电泵可整套潜入液体下，可立卧使用。但液体不得低于电泵叶轮以下，以免造成电泵出液量不足，电机冷却不足造成烧机。
- (3) 如输送污物时，需在电泵叶轮底板加装过滤网，以免叶轮内部造成堵塞，不使用时应及时清理杂物。

The temperature is not more than 40℃, and the volume ratio of solid impurities in S is not more than 0.1%, and the particle size is not more than 0.2 mm. If the temperature exceeds 40℃s, the cable material with high temperature resistance mechanical seal should be selected, and stainless steel 304 316 can be selected.

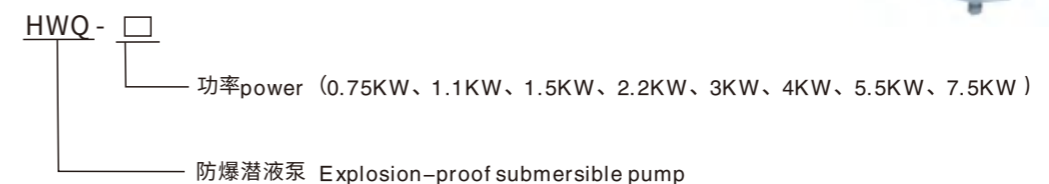
(2) The whole set of electric pump can be submerged under the liquid, and can be used vertically and horizontally. However, the liquid shall not be lower than the impeller of the electric pump, so as to avoid insufficient liquid output of the electric pump and insufficient cooling of the motor, which will cause the machine to burn.

(3) When transferring dirt, it is necessary to install a filter on the bottom plate of the electric pump impeller to avoid blockage inside the impeller. When not in use, clean up the debris in time.

### 3.执行标准 Executive standard

- GB 3836.1-2010
- GB 3836.2-2010
- GB 25286.1-2010
- GB 25286.3-2010
- GB 1T 4208-2017

### 产品型号 product model



## HWQ系列防爆潜液泵

HWQ series explosion-proof submersible pump



### 性能参数 performance parameter

| 防爆等级CT4/IP68<br>Ex Grade CT4/IP68 |                   |                |                  |                   |                     |                     |
|-----------------------------------|-------------------|----------------|------------------|-------------------|---------------------|---------------------|
| 型号 Model                          | 额定流量 Flow<br>m³/h | 额定扬程 Head<br>m | 额定功率 Power<br>KW | 额定电压 Voltage<br>V | 同步转速 Speed<br>r/min | 配管内径 Size inch<br>寸 |
| HWQ50-10-10-0.75                  | 10                | 10             | 0.75             | 380               | 2900                | 2                   |
| HWQ25-5-22-1.1                    | 5                 | 22             | 1.1              | 380               | 2900                | 1                   |
| HWQ32-6-20-1.1                    | 6                 | 20             | 1.1              | 380               | 2900                | 1.2                 |
| HWQ40-7-18-1.1                    | 7                 | 18             | 1.1              | 380               | 2900                | 1.5                 |
| HWQ50-10-12-1.1                   | 10                | 12             | 1.1              | 380               | 2900                | 2                   |
| HWQ65-15-9-1.1                    | 15                | 9              | 1.1              | 380               | 2900                | 2.5                 |
| HWQ40-8-18-1.5                    | 8                 | 18             | 1.5              | 380               | 2900                | 1.5                 |
| HWQ50-10-15-1.5                   | 10                | 15             | 1.5              | 380               | 2900                | 2                   |
| HWQ65-20-10-1.5                   | 20                | 10             | 1.5              | 380               | 2900                | 2.5                 |
| HWQ80-40-7-1.5                    | 40                | 7              | 1.5              | 380               | 2900                | 3                   |
| HWQ100-50-5-1.5                   | 50                | 5              | 1.5              | 380               | 2900                | 4                   |
| HWQ40-8-24-2.2                    | 8                 | 24             | 2.2              | 380               | 2900                | 1.5                 |
| HWQ50-9-22-2.2                    | 9                 | 22             | 2.2              | 380               | 2900                | 2                   |
| HWQ50-15-20-2.2                   | 15                | 20             | 2.2              | 380               | 2900                | 2                   |
| HWQ65-20-15-2.2                   | 20                | 15             | 2.2              | 380               | 2900                | 2.5                 |
| HWQ80-40-10-2.2                   | 40                | 10             | 2.2              | 380               | 2900                | 3                   |
| HWQ100-50-7-2.2                   | 50                | 7              | 2.2              | 380               | 2900                | 4                   |
| HWQ50-15-25-3                     | 15                | 25             | 3                | 380               | 2900                | 2                   |
| HWQ65-25-18-3                     | 25                | 18             | 3                | 380               | 2900                | 2.5                 |
| HWQ65-37-13-3                     | 37                | 13             | 3                | 380               | 2900                | 2.5                 |
| HWQ80-45-12-3                     | 45                | 12             | 3                | 380               | 2900                | 3                   |
| HWQ80-43-13-3                     | 43                | 13             | 3                | 380               | 2900                | 3                   |
| HWQ100-60-9-3                     | 60                | 9              | 3                | 380               | 2900                | 4                   |
| HWQ50-15-30-4                     | 15                | 30             | 4                | 380               | 2900                | 2                   |
| HWQ65-25-25-4                     | 25                | 25             | 4                | 380               | 2900                | 2.5                 |
| HWQ80-40-16-4                     | 40                | 16             | 4                | 380               | 2900                | 3                   |
| HWQ100-60-12-4                    | 60                | 12             | 4                | 380               | 2900                | 4                   |
| HWQ100-80-10-4                    | 80                | 10             | 4                | 380               | 2900                | 4                   |
| HWQ50-15-40-5.5                   | 15                | 40             | 5.5              | 380               | 2900                | 2                   |
| HWQ65-25-30-5.5                   | 25                | 30             | 5.5              | 380               | 2900                | 2.5                 |
| HWQ80-40-22-5.5                   | 40                | 22             | 5.5              | 380               | 2900                | 3                   |
| HWQ100-60-18-5.5                  | 60                | 18             | 5.5              | 380               | 2900                | 4                   |
| HWQ150-120-8-5.5                  | 120               | 8              | 5.5              | 380               | 2900                | 6                   |
| HWQ50-15-50-7.5                   | 15                | 50             | 7.5              | 380               | 2900                | 2                   |
| HWQ65-25-40-7.5                   | 25                | 40             | 7.5              | 380               | 2900                | 2.5                 |
| HWQ80-40-28-7.5                   | 40                | 28             | 7.5              | 380               | 2900                | 3                   |
| HWQ100-65-22-7.5                  | 65                | 22             | 7.5              | 380               | 2900                | 4                   |
| HWQ150-100-10-7.5                 | 100               | 10             | 7.5              | 380               | 2900                | 6                   |

## HWQ系列防爆潜液泵(切割系列)

HWQ series explosion-proof submersible pump (cutting series)

### 性能参数 performance parameter

| 铸铁切割 Cast iron cutting<br>防爆等级BT4/CT4材质: 不锈钢/铸铁<br>Explosion-proof grade BT4/CT4 material: stainless steel/cast iron |                   |                |                  |                   |                     |                     |
|--|-------------------|----------------|------------------|-------------------|---------------------|---------------------|
| 型号 Model   | 额定流量 Flow<br>m³/h | 额定扬程 Head<br>m | 额定功率 Power<br>KW | 额定电压 Voltage<br>V | 同步转速 Speed<br>r/min | 配管内径 Size inch<br>寸 |
| HWQ50-10-10-0.75   | 10                | 10             | 0.75             | 380               | 2900                | 2                   |
| HWQ50-12-10-1.1  | 12                | 10             | 1.1              | 380               | 2900                | 2                   |
| HWQ50-15-15-1.5  | 15                | 15             | 1.5              | 380               | 2900                | 2                   |
| HWQ50-15-20-2.2  | 15                | 20             | 2.2              | 380               | 2900                | 2                   |
| HWQ65-20-15-2.2  | 20                | 15             | 2.2              | 380               | 2900                | 2.5                 |
| HWQ80-40-10-2.2  | 40                | 10             | 2.2              | 380               | 2900                | 3                   |
| HWQ50-15-25-3  | 15                | 25             | 3                | 380               | 2900                | 2                   |
| HWQ65-25-18-3  | 25                | 18             | 3                | 380               | 2900                | 2.5                 |
| HWQ80-45-12-3  | 45                | 12             | 3                | 380               | 2900                | 3                   |
| HWQ100-60-9-3  | 60                | 9              | 3                | 380               | 2900                | 4                   |
| HWQ50-15-30-4  | 15                | 30             | 4                | 380               | 2900                | 2                   |
| HWQ65-25-25-4  | 25                | 25             | 4                | 380               | 2900                | 2.5                 |
| HWQ80-40-16-4  | 40                | 16             | 4                | 380               | 2900                | 3                   |
| HWQ100-60-12-4   | 60                | 12             | 4                | 380               | 2900                | 4                   |
| HWQ80-40-22-5.5  | 40                | 22             | 5.5              | 380               | 2900                | 3                   |
| HWQ100-60-18-5.5   | 60                | 18             | 5.5              | 380               | 2900                | 4                   |
| HWQ80-40-28-7.5  | 40                | 28             | 7.5              | 380               | 2900                | 3                   |
| HWQB100-65-22-7.5  | 65                | 22             | 7.5              | 380               | 2900                | 4                   |
| HWQB150-100-10-7.5   | 100               | 10             | 7.5              | 380               | 2900                | 6                   |
| HWQB80-60-30-11  | 60                | 30             | 11               | 380               | 2900                | 3                   |
| HWQB100-80-25-11   | 80                | 28             | 11               | 380               | 2900                | 4                   |
| HWQB150-100-20-11  | 100               | 20             | 11               | 380               | 2900                | 6                   |
| HWQB80-60-40-15  | 60                | 40             | 15               | 380               | 2900                | 3                   |
| HWQB100-80-35-15   | 80                | 35             | 15               | 380               | 2900                | 4                   |
| HWQB150-100-30-15  | 100               | 30             | 15               | 380               | 2900                | 4                   |

## KYB系列自吸滑板泵 KYB SELF PRIMING VANE PUMP



流量计系列  
防爆标志: Ex d IIB T4 Gb  
防护等级: IP55  
防护等380V



防爆标志: Ex d IIB T4 Gb  
防护等级: IP55  
电压: 220V



防爆标志: Ex d IIB T4 Gb  
防护等级: IP55  
电压: 380V

### 产品概述 Product overview

用于柴油, 煤油, 汽油, 苯等干净, 轻质油品。  
滑片泵, 输入功率小, 大流量。  
铸铁泵体, 四氟滑片, 动力可选配防爆电机或柴油机。  
内置溢流阀, 过滤网。  
进出口用快速接头连接。  
最高传输液体温度可达100℃  
可长时间连续工作。  
超强自吸能力, 工作前不必向泵内灌入油液。  
滑轮拖车设计, 使用方便, 易操作, 易维护。

For diesel oil, kerosene, gasoline, benzene and other clean, light oily liquid.

Vane pump, large output with small power input.

Cast iron pump casing, teflon vanes, electric motor or diesel engine driven for option.

Bypass valve built in, with inner filter.

Quick coupling connection on inlet/outlet side.

Max liquid temperature up to 100℃

Continuous working.

Strong self-priming, it's not necessary to pour oil before pump working.

Trailer type design, moveable, easy to use and maintenance.

### 泵执行标准 Executive standard

GB3836.1-2010  
GB3836.2-2010

### 电执行标准 Electric execution standard

GB3836.1-2010  
GB3836.2-2010

### 技术参数 Technical Specification

| 型号 Model     | 口径 Size(mm) | 流量 Flow(m <sup>3</sup> /h) | 扬程 Head(m) | 吸程 Suction(m) | 功率 Power(Kw) | 转速 Speed(rpm) | 电压 Voltage(V) |
|--------------|-------------|----------------------------|------------|---------------|--------------|---------------|---------------|
| KYB32-9-30   | 25/32       | 9                          | 30         | 7             | 1.1          | 1450          | 380/220       |
| KYB40-15-30  | 40          | 20                         | 30         | 7             | 1.5          | 1450          | 380/220       |
| KYB40-20-30  | 40          | 20                         | 30         | 7             | 2.2          | 1450          | 380/220       |
| KYB50-25-25  | 50          | 25                         | 25         | 7             | 3            | 1450          | 380/220       |
| KYB65-35-20  | 65          | 35                         | 20         | 7             | 4            | 1450          | 380/220       |
| KYB80-45-20  | 80          | 45                         | 20         | 7             | 5.5          | 1450          | 380           |
| KYB100-60-20 | 100         | 60                         | 20         | 7             | 7.5          | 1450          | 380           |

## KYB柴油机带计量 KYB DIESEL ENGINE WITH FLOW METER

### 技术参数 Technical Specification

| 型号 Model           | DKYB-40                          | DKYB-50             | DKYB-65             | DKYB-80             |
|--------------------|----------------------------------|---------------------|---------------------|---------------------|
| 进出口 Dia(mm)        | 40/40                            | 50/50               | 65/65               | 80/80               |
| 最大流量 Max Flow      | 20m <sup>3</sup> /H              | 25m <sup>3</sup> /H | 32m <sup>3</sup> /H | 35m <sup>3</sup> /H |
| 柴油机 Diesel Engine  | 3.7kw                            |                     | 5.7kw               |                     |
| 转速 Speed           | 10000 rpm                        |                     | 8000 rpm            |                     |
| 泵体材料 Pump Material | 铸铁 Casting Iron                  |                     |                     |                     |
| 流量计 Flow Meter     | OGM and LC flow meter for option |                     |                     |                     |



柴油机型移动式自吸滑板泵  
Diesel Engine Driven

适用于柴油, 汽油, 煤油, 机油等

携带方便, 便于移动

柴油机驱动, 适用于野外工作。

快速接头进出口

快速计量, 小型移动加油站

For Diesel, Gasoline, Kerosene, engine oil and etc

It's easy to move with wheels.

Diesel engine driven, apply for wild circumstances.

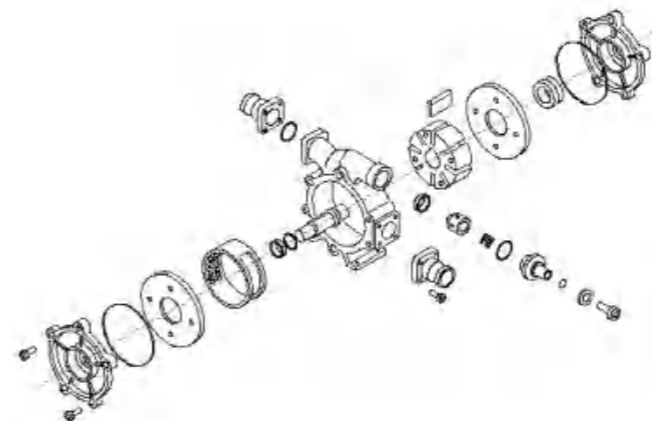
Quick coupling, easy connect.

With Flow meter, used for a Mobile fuel unit.



柴油机带计量  
diesel engine  
with flow meter

### 原理 Theory



立式滑板泵  
Vertical slide pump

## DYB系列交流防爆电动油泵

DYB AC ELECTRIC TRANSFER PUMP EXPLOSION PROOF



### 产品概述 Product overview

用于柴油，汽油，煤油，溶剂油，庚烷，甲醇。  
 输送汽油，甲醇，二甲苯必须选用铜叶轮。  
 防爆永磁电动机。  
 内置过滤网、溢流阀。  
 1"4米油管，1"自动油枪。  
 防水，防雨。  
 油枪架保护防尘防脏。  
 220V单相防爆电机。  
 连接方面，易于携带。

For diesel, gasoline, kerosene, mineral spirits, Stoddard solvent, heptane, methyl alcohol.  
 It's available for transferring gasoline, xylol and methanol when equipped with brass gear.  
 Explosion-proof permanent magnet motor.  
 Built-in strainer, bypass valve.  
 1" diameter, 12' hose with static ground wire and 1" automatic nozzle.  
 Nozzle boot that protects against dirt and contamination.  
 2" threaded base for tank openings.  
 220V Single phase Ex-proof motor.  
 Easy to connect, very portable.

### 执行标准 Executive standard

GB 3836.1-2010  
 GB 3836.2-2010

| 型号 Model                                   | DYB80-EX                                       | DYB150-EX                                    |
|--|--|--|
| 泵的流量<br>Flow of the pump                   | ( 40-80 ) L/min                                | ( 120-150 ) L/min                            |
| 电压 voltage                                 | AC220V ± 10%<br>50Hz<br>AC110V ± 10%<br>50Hz   | AC220V ± 10%<br>50Hz<br>AC110V ± 10%<br>50Hz |
| 溢流阀<br>overflow valve                      | Yes  | Yes  |
| 过滤网 filter                                 | Yes  | Yes  |
| 电机参数<br>motor parameters                   | 功率0.55kw<br>转速2800r/min                        | 功率KW<br>转速2900r/min                          |
| 进出口<br>Import and export                   | 1"NPT<br>1"NPT                                 | 1.2"NPT<br>1.2"NPT                           |
| 材质 material                                | 铸铁/不锈钢<br>Cast iron/Stainless steel            | 铸铁<br>Cast iron                              |
| 防爆标志/等级<br>Explosion-proof<br>marks/grades | ExdIIBT4Gb/F                                   | ExdIIBT4Gb/F                                 |
| 吸程/扬程<br>Suction/Head                      | 5m/15m   | 5m/15m                                       |
| 可选配置<br>For Option                         | 4m油管，油表，油枪<br>4m Hose, Fuel Meter, Fuel Nozzle |  |

220V 防爆单泵  
220V Ex-proof pump



DYB150-EX

### 执行标准 Executive standard

GB 3836.1-2010  
 GB 25286.1-2010  
 GB 25286.5-2010  
 GB 1 T 4208-2017

## 防爆电动油泵

Explosion-proof electric oil pump

### 产品概述 Product overview

适用于柴油，汽油，煤油，溶剂油和庚烷  
 输送汽油，甲醇，二甲苯必须选用铜叶轮。  
 防爆永磁电动机，带过热保护  
 内置过滤网，溢流阀  
 油罐口2"，接口螺纹  
 可以60分钟连续运转

Compatible with diesel, gasoline, kerosene, mineral spirits, heptane, and hexane  
 It's available for transferring gasoline, xylol and methanol  
 Explosion proof permanent magnet motor with thermal overload protection, for utmost safety.  
 Built-in strainer, bypass valve.  
 2" threaded base for tank openings.  
 60min duty cycle, not for continuous operation.

| 型号 Model        | EYB-60  |
|-----------------|---|
| 进口 Inlet Dia    | 3/4"  |
| 出口 Outlet Dia   | 3/4"  |
| 最大流量 Max Flow   | 70L/min   |
| 防爆电机 Ex-motor   | 300W(12V) 500W(24V)   |
| 电压 Power Supply | DC12V or DC24V  |
| 可选配置 For Option | 进/出油管，油表，油枪<br>Suction/Discharge hose,<br>Flow Meter, Fuel Nozzle |



EYB-60ZX



DYB-200EX



HW静音泵

### 执行标准 Executive standard

GB 3836.1-2010  
 GB 25286.1-2010  
 GB 25286.5-2010  
 GB 1 T 4208-2017

### WCB循环泵 Circulation Pump

HW静音循环泵是一种小巧轻便的风扇式油泵，主要用于食品机械中热油的循环，最高温度可达到150℃泵的进出口方向可选上下或左右进出，材质为铸铁。

HW silent circulating pump is a small and portable fan-type oil pump, which is mainly used for circulating hot oil in food machinery, and the highest temperature can reach 150C C. The inlet and outlet direction of the pump can be up and down or left and right, and the material is cast iron.

## HWX系列防爆油水高压泵

HWX series explosion-proof oil-water high-pressure pump



220V防爆系列  
220V explosion-proof series



380V防爆系列  
380V explosion-proof series

# DONG HANG

### 产品概述 Product overview

HWX油水两用泵由铝合金泵壳和流道式铜叶轮组合。该系列流量大、扬程高、自吸速度快、能耗成本低等优势。可输送汽油酒精、甲醇、煤油柴油等易燃易爆介质适用于工矿企业、加油站、油库、矿井等场地循环排液，也可作为防爆消防泵，市政工程循环排水。  
(灌液后吸程1-2米)

The HWX oil-water dual-purpose pump is a combination of an aluminum alloy pump casing and a runner copper impeller. The series has the advantages of large flow, high head, fast self-priming speed and low energy consumption. It can transport gasoline, alcohol, methanol, kerosene, diesel and other inflammable and explosive media suitable for circulating liquids in industrial and mining enterprises, gas stations, oil depots, mines, etc. It can also be used as an explosion-proof fire pump and municipal engineering circulating drainage.

### 技术参数 Performance Specification

| 型号 Model                    | HWX25-8-15 | HWX40-18-28 | HWX50-25-28 | HWX80-50-28 | HWX100-75-20 |
|-----------------------------|------------|-------------|-------------|-------------|--------------|
| 口径 Size                     | 25mm       | 40mm        | 50mm        | 80mm        | 100mm        |
| 流量 Flow (m <sup>3</sup> /h) | 8          | 18          | 25          | 50          | 75           |
| 扬程 Head                     | 15         | 28          | 28          | 28          | 20           |
| 功率 Power                    | 1.1KW      | 1.5KW       | 2.2KW       | 3KW         | 3KW          |
| 转速 Speed                    | 2800rpm    | 2800rpm     | 2800rpm     | 2800rpm     | 2800rpm      |
| 电压 Voltage                  | 220/380    | 220/380     | 220/380     | 220/380     | 220/380      |

叶轮可选配置 Impeller optional configuration

球墨叶轮/铜叶轮 Spherical impeller/copper impeller

## HWB系列防爆油水循环泵

HWB series explosion-proof oil-water circulating pump



220V防爆系列  
220V explosion-proof series



380V防爆系列  
380V explosion-proof series

### 产品概述 Product overview

HWB油水循环泵采用离心式结构。具有较大流量，无噪音等优点。排放浑浊液体和固体小颗粒能力，适用于矿井加油站工矿企业等场地的供液及锅炉循环供水输送汽油酒精甲醇等易燃易爆物质。  
(没有自吸功能)

The HWB oil-water circulation pump uses a centrifugal structure. It has the advantages of large flow, no noise, etc. It can discharge turbid liquid and small solid particles. It is suitable for liquid supply in mine gas station industrial and mining enterprises and boiler circulating water supply to transport flammable and explosive substances such as gasoline, alcohol and methanol.

### 技术参数 Performance Specification

| 型号 Model                    | HWB25-7-15 | HWB40-12-17 | HWB50-30-23 | HWB80-60-19 | HWB100-72-19 |
|-----------------------------|------------|-------------|-------------|-------------|--------------|
| 口径 Size                     | 25mm       | 40mm        | 50mm        | 80mm        | 100mm        |
| 流量 Flow (m <sup>3</sup> /h) | 7          | 12          | 30          | 60          | 75           |
| 扬程 Head                     | 15         | 17          | 23          | 19          | 19           |
| 功率 Power                    | 0.75KW     | 1.1KW       | 1.5KW       | 2.2KW       | 3KW          |
| 转速 Speed                    | 2800rpm    | 2800rpm     | 2800rpm     | 2800rpm     | 2800rpm      |
| 电压 Voltage                  | 220/380    | 220/380     | 220/380     | 220/380     | 220/380      |

叶轮配置 Impeller configuration

铜叶轮 copper impeller

## CYZ-A自吸式离心油泵 CYZ-A self-priming centrifugal oil pump



自吸离心泵  
380V防爆系列



自吸离心泵  
220V防爆系列



柴油机自吸泵

### 产品概述 Product overview

CYZ-A自吸式离心油泵用来输送汽油，柴油，煤油等石油产品。介质温度在-20℃~+80℃，是一种优良的船用装卸油泵。也可以用来输送海水，淡水等。

CYZ-A pump is a centrifugal pump with function of self priming, for diesel oil, gasoline, kerosene and other light oily liquid transfer, with temperature at -20℃~+80℃. It's a good marine oil pump, transfers water and sea water as well.

|            |                                     |
|------------|-------------------------------------|
| 口径 Size    | 25-300mm                            |
| 流量 Flow    | 3.2-500 m <sup>3</sup> /h           |
| 扬程 Head    | 12-80m                              |
| 吸程 Suction | 6.5m                                |
| 功率 Power   | 0.75-110Kw                          |
| 转速 Speed   | 1450rpm 2900rpm                     |
| 驱动 Driver  | 电机/柴油机 Electric motor/Diesel Engine |

### ZW自吸式排污泵 ZW Sewage Pump

ZW自吸排污泵集自吸和无堵塞排污于一体，既可像一般清水自吸泵那样不需安底阀，不需引灌水、又可抽吸含有大颗粒固体块、长纤维的污物、沉淀物废矿杂质、粪便处理及一切工程污水物，完全减轻工人的劳动强度，而且使用、移动、安装方便、极少维修、性能稳定。

ZW Self-priming Non-closing Sewage Pump is developed based on the structures and characteristics of ZX centrifugal pump and QW drainage pump.

Particularly suitable for pumping the industrial garbage such as mining slurry and the municipal sewage.

|            |                                     |
|------------|-------------------------------------|
| 口径 Size    | 25-300mm                            |
| 流量 Flow    | 8-800 m <sup>3</sup> /h             |
| 扬程 Head    | 12-60m                              |
| 吸程 Suction | 5.5m                                |
| 功率 Power   | 2.2-75Kw                            |
| 转速 Speed   | 1450rpm 2900rpm                     |
| 驱动 Driver  | 电机/柴油机 Electric motor/Diesel Engine |

## 管道离心泵 pipeline Centrifugal Oil Pump



GW管道排污泵  
220V防爆



YG管道油泵  
380V防爆



ISW管道油泵  
380V防爆

### 产品概述 Product overview

立式管道泵是单极，单吸离心泵，输送汽油，柴油，煤油等轻质油品，介质温度为-20℃~+150℃ 防爆电机电压可选择 220V/380V/660V/1140V

Type vertical pipeline pump is a single pole, single suction centrifugal pump, transport gasoline, diesel, kerosene and other light Quality oil products, medium temperature of -20℃~+150℃. The explosion-proof motor voltage can choose 220V/380V/660V/1140V

|          |                           |
|----------|---------------------------|
| 口径 Size  | 15-500mm                  |
| 流量 Flow  | 1.5-1500m <sup>3</sup> /h |
| 扬程 Head  | 7-150m                    |
| 功率 Powre | 0.37-160kw                |
| 转速 Speed | 2900rpm 1450rpm 980rpm    |

## GW无堵塞管道泵 GW non-blocking pipeline pump

gw无堵塞管道泵采用独特叶轮结构和新型机械密封，能有效地输送含有固体物和长纤维。叶轮与传统叶轮相比，该泵叶轮采用单流道或双流道形式，它类似于一截面大小相同的弯管，具有非常好的过流性，配以合理的蜗室，使得该泵具有效率高、叶轮经动静平衡试验，使泵在运行中无振动。

GW non-blocking pipeline pump adopts unique impeller structure and new mechanical seal, which can effectively transport solids and long fibers. Compared with the traditional impeller, the impeller of the pump adopts the form of single channel or double channel, which is similar to a bent pipe with the same cross section, and has very good flow performance. With a reasonable volute chamber, the pump has high efficiency, and the impeller has passed the static and dynamic balance test, so that the pump has no vibration during operation.

|          |                           |
|----------|---------------------------|
| 口径 Size  | 15-500mm                  |
| 流量 Flow  | 1.5-1500m <sup>3</sup> /h |
| 扬程 Head  | 7-150m                    |
| 功率 Powre | 0.37-160kw                |
| 转速 Speed | 2900rpm 1450rpm 980rpm    |

## CQB型磁力驱动离心泵 CQB magnetic drive centrifugal pump



### 产品概述 Product overview

CQB型磁力驱动离心泵（简称CQB磁力泵）。主要特点是利用磁联轴器的外磁钢旋转时，磁力线穿过间隙和隔离套，作用于内磁钢上，使泵轴与电动机同步旋转，无接触地传递扭矩。在泵轴的动力输入端，由于液体被封闭在静止的隔离套内，没有动密封，因而杜绝了石化行业中免不了的跑、冒、滴、漏现象，完全无泄漏，设计压力为16公斤。此种类型的泵适用于输送有毒、有害、易燃、易爆和贵重液体介质，是创建无泄漏、无污染文明车间、文明工厂的理想用泵。

CQB magnetic drive centrifugal pump (CQB magnetic pump for short). The main feature is that when the outer magnetic steel of the magnetic coupling rotates, the magnetic lines of force pass through the gap and the isolation sleeve and act on the inner magnetic steel, so that the pump shaft and the motor rotate synchronously and transmit torque without contact. At the power input end of the pump shaft, because the liquid is enclosed in the static isolation sleeve and there is no dynamic seal, the inevitable phenomena of running, running, dripping and leaking in the petrochemical industry are eliminated, and there is no leakage at all, and the design pressure is 16 kg. This type of pump is suitable for conveying toxic, harmful, flammable, explosive and valuable liquid media, and is an ideal

性能参数表/Performance Table

| 型号Type        | 口径<br>Caliber        |                      | 流量<br>Capacity<br>(L/min) | 扬程<br>Head<br>(M) | 电机功率<br>Power<br>(Kw) | 电压<br>voltage<br>(V) | 材质<br>texture<br>of wood |
|---------------|----------------------|----------------------|---------------------------|-------------------|-----------------------|----------------------|--------------------------|
|               | 进口<br>Import<br>(mm) | 出口<br>Export<br>(mm) |                           |                   |                       |                      |                          |
| CQB32-20-125  | 32                   | 20                   | 3.2                       | 20                | 1.1                   | 380                  | 不<br>锈<br>钢              |
| CQB32-20-160  | 32                   | 20                   | 3.2                       | 32                | 1.5                   | 380                  |                          |
| CQB40-25-125  | 40                   | 25                   | 6.3                       | 20                | 2.2                   | 380                  |                          |
| CQB40-25-160  | 40                   | 25                   | 6.3                       | 32                | 3                     | 380                  |                          |
| CQB40-25-200  | 40                   | 25                   | 6.3                       | 50                | 5.5                   | 380                  |                          |
| CQB32-32-125  | 50                   | 32                   | 12.5                      | 20                | 3                     | 380                  |                          |
| CQB32-32-160  | 50                   | 32                   | 12.5                      | 32                | 4                     | 380                  |                          |
| CQB50-32-200  | 50                   | 32                   | 12.5                      | 50                | 7.5                   | 380                  |                          |
| CQB50-32-250  | 50                   | 32                   | 12.5                      | 80                | 18.5                  | 380                  |                          |
| CQB65-50-125  | 65                   | 50                   | 25                        | 20                | 4                     | 380                  |                          |
| CQB65-50-160  | 65                   | 50                   | 25                        | 32                | 7.5                   | 380                  |                          |
| CQB65-40-200  | 65                   | 40                   | 25                        | 50                | 15                    | 380                  |                          |
| CQB65-40-250  | 80                   | 40                   | 25                        | 80                | 18.5                  | 380                  |                          |
| CQB80-65-125  | 80                   | 65                   | 50                        | 20                | 7.5                   | 380                  |                          |
| CQB80-65-160  | 80                   | 65                   | 50                        | 32                | 15                    | 380                  |                          |
| CQB80-50-200  | 80                   | 50                   | 50                        | 50                | 18.5                  | 380                  |                          |
| CQB80-50-250  | 80                   | 50                   | 50                        | 80                | 37                    | 380                  |                          |
| CQB100-80-125 | 100                  | 80                   | 100                       | 20                | 15                    | 380                  |                          |
| CQB100-80-160 | 100                  | 80                   | 100                       | 32                | 18.5                  | 380                  |                          |
| CQB100-65-200 | 100                  | 65                   | 100                       | 50                | 37                    | 380                  |                          |
| CQB100-65-250 | 100                  | 65                   | 100                       | 80                | 55                    | 380                  |                          |

## ZCQ自吸式防爆磁力泵 ZCQ self-priming explosion-proof magnetic pump



### 产品概述 Product overview

ZCQ型自吸式磁力泵驱动泵（以下简称自吸泵）该泵以静密封取代动密封，使泵的过流部件处于完全密封状态，彻底解决了其它泵机械密封无法避免的跑、冒、滴、漏之弊病，泵体及过流部件的材料均采用了耐腐蚀的不锈钢、四氟石墨等材料制造，既有CQ型磁力驱动泵的功能，又集自吸于一身，不需底阀和引灌水，自吸高度4米。

该泵结构紧凑，外形美观，体积小，噪音低，运行可靠，使用维修方便，可广泛用于石油、化工、制药、电镀、印染、食品、科研等单位输送酸、碱、油类及稀有贵重液、毒液、挥发性液体，以及循环水设备配套，特别易漏、易燃、易爆液体的抽送。

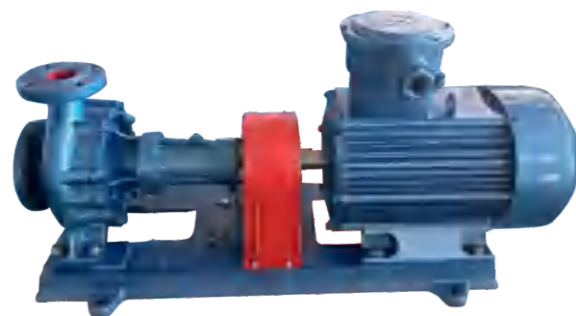
ZCQ type self-priming magnetic pump drive pump (hereinafter referred to as self-priming pump) This pump replaces dynamic seal with static seal, so that the flow parts of the pump are in a completely sealed state, which completely solves the inevitable problems of running, leaking, dripping and leaking of mechanical seals of other pumps. The pump body and flow parts are made of corrosion-resistant stainless steel, tetrafluorographite and other materials, which not only has the function of CQ type magnetic drive pump, but also integrates self-priming, without bottom valve and irrigation.

The pump is compact in structure, beautiful in appearance, small in volume, low in noise, reliable in operation and convenient in use and maintenance. It can be widely used for pumping acid, alkali, oil, rare and precious liquid, venom, volatile liquid and circulating water equipment in petroleum, chemical industry, pharmacy, electroplating, printing and dyeing, food, scientific research and other units, especially for pumping easily leaked, flammable and explosive liquid.

| 型号Type        | 口径<br>Caliber        |                      | 流量<br>Capacity<br>(L/min) | 扬程<br>Head<br>(M)  | 电机功率<br>Power<br>(Kw) | 转速<br>Speed<br>(r/min) | 效率<br>Efficiency<br>η(%) | 自吸能力<br>m/3分 |
|---------------|----------------------|----------------------|---------------------------|--------------------|-----------------------|------------------------|--------------------------|--------------|
|               | 进口<br>Import<br>(mm) | 出口<br>Export<br>(mm) |                           |                    |                       |                        |                          |              |
| 型号Type        | 20                   | 12                   | 0.8<br>1.8<br>1.9         | 8.5<br>12<br>6     | Ys7112<br>0.37        | 2900                   | 17<br>19<br>20           | 4            |
| ZCQ25-20-115  | 25                   | 20                   | 1.5<br>3<br>3.2           | 16.5<br>15<br>13.5 | Y802-2<br>YB1.1       | 2900                   | 24<br>26<br>27           | 4            |
| ZCQ32-25-115  | 32                   | 25                   | 1.9<br>3.2<br>3.8         | 17<br>15<br>13     | Y802-2<br>YB1.1       | 2900                   | 23<br>30<br>31           | 4            |
| ZCQ32-25-145  | 32                   | 25                   | 1.9<br>3.2<br>3.8         | 27<br>25<br>23     | Y802-2<br>YB1.1       | 2900                   | 21<br>28<br>29           | 4            |
| ZCQ40-32-125  | 40                   | 32                   | 3.8<br>6.3<br>7.5         | 22<br>20<br>18.5   | Y90L-2<br>YB2.2       | 2900                   | 28<br>35<br>38           | 4            |
| ZCQ40-32-160  | 40                   | 32                   | 3.8<br>6.3<br>7.5         | 34<br>32<br>29     | Y120M-2<br>YB4.0      | 2900                   | 25<br>32<br>33           | 4            |
| ZCQ50-40-145  | 50                   | 40                   | 12.5<br>15<br>15          | 27<br>25<br>23     | Y112M-2<br>YB4.0      | 2900                   | 30<br>42<br>43           | 4            |
| ZCQ50-40-160  | 50                   | 40                   | 7.5<br>12.5<br>15         | 34<br>32<br>29     | Y112M-2<br>YB4.0      | 2900                   | 28<br>39<br>40           | 4            |
| ZCQ50-32-200  | 50                   | 32                   | 7.5<br>12.5<br>15         | 52.5<br>50<br>48   | Y132S2-2<br>YB7.5     | 2900                   | 21<br>31<br>32           | 4            |
| ZCQ65-50-125  | 65                   | 50                   | 15<br>25<br>30            | 22<br>20<br>18.5   | Y132S1-2<br>YB5.5     | 2900                   | 40<br>51<br>52           | 4            |
| ZCQ65-50-160  | 65                   | 50                   | 15<br>25<br>30            | 34<br>32<br>28.5   | Y132S2-2<br>YB7.5     | 2900                   | 32<br>43<br>44           | 4            |
| ZCQ65-40-200  | 65                   | 40                   | 15<br>25<br>30            | 53<br>50<br>47     | Y160M2-2<br>YB15      | 2900                   | 25<br>37<br>38           | 4            |
| ZCQ80-65-125  | 80                   | 65                   | 30<br>50<br>60            | 22.5<br>20<br>18   | Y132S2-2<br>YB7.5     | 2900                   | 41<br>52<br>53           | 4            |
| ZCQ80-65-160  | 80                   | 65                   | 30<br>50<br>60            | 34<br>32<br>29     | Y160M2-2<br>YB15      | 2900                   | 38<br>48<br>49           | 4            |
| ZCQ80-50-200  | 80                   | 50                   | 30<br>50<br>60            | 53<br>50<br>47     | Y180M2-2<br>YB22      | 2900                   | 36<br>46<br>47           | 4            |
| ZCQ80-50-250  | 80                   | 50                   | 30<br>50<br>60            | 84<br>80<br>75     | Y220L2-2<br>YB37      | 2900                   | 36<br>46<br>47           | 4            |
| ZCQ100-80-160 | 100                  | 80                   | 60<br>100<br>120          | 36<br>32<br>28     | Y180M-2<br>YB22       | 2900                   | 46<br>55<br>58           | 4            |
| ZCQ100-65-200 | 100                  | 65                   | 60<br>100<br>120          | 54<br>50<br>47     | Y220L2-2<br>YB37      | 2900                   | 42<br>53<br>56           | 4            |
| ZCQ100-65-250 | 100                  | 65                   | 60<br>100<br>120          | 86<br>80<br>74.5   | Y250M-2<br>YB55       | 2900                   | 37<br>48<br>49           | 4            |

## 导热油循环泵

Heat transfer oil circulating pump



### 产品概述 Product overview

导热油循环泵（又叫热油泵）是一款节能型新产品。性能优良，结构合理，使用可靠。导热油循环泵采用自热散热结构，改变了传统的水冷却结构，使用结构简单，体积小，节约运行费用，性能好，使用可靠，基本结构形成单级单吸悬臂式脚支撑结构，泵的进口为轴向吸入，出口为中心垂直向上，和电机同装与底座上。导热油循环泵适用于输送不含固体颗粒的高温液体。

Heat transfer oil circulating pump (also called hot oil pump) is a new energy-saving product. Excellent performance, reasonable structure and reliable use. The heat transfer oil circulating pump adopts self-heating heat dissipation structure, which changes the traditional water cooling structure, and has the advantages of simple structure, small volume, saving operation cost, good performance and reliable use. The basic structure is formed as a single-stage single-suction cantilever foot support structure, with the inlet of the pump being axial suction, the outlet being vertical upward as the center, and being installed on the base together with the motor. Heat transfer oil circulating oil pump is suitable for conveying high temperature liquid without solid particles.

应用领域:

石油及化学工业  
油脂工业  
合成纤维工业  
纺织印染工业  
塑料及橡胶工业  
造纸工业  
木材工业  
建筑行业

Application field:

Petroleum and chemical industries  
Oil industry  
Synthetic fiber industry  
Textile printing and dyeing industry  
plastic and rubber industry  
Paper industry  
Wood industry  
Construction industry

| 泵型号<br>Model | 流量<br>Capacity<br>m³/h | 扬程<br>Head<br>m | 转速<br>r/min | 功率 Power Kw           |               | 效率 η %<br>Efficiency |
|--------------|------------------------|-----------------|-------------|-----------------------|---------------|----------------------|
|              |                        |                 |             | 轴功率<br>Axle-<br>Power | 配用功率<br>Power |                      |
| 20-20-100    | 1                      | 10              | 2800        | 0.09                  | 0.37          | 26                   |
| 20-20-125    | 1.5                    | 22              | 2800        | 0.22                  | 0.75          | 30                   |
| 40-25-160    | 10                     | 28              | 2900        | 1.72                  | 2.2           | 45                   |
| 25-25-160    | 3                      | 27              | 2900        | 0.53                  | 1.5           | 30                   |
| 32-32-160    | 6                      | 28              | 2900        | 0.85                  | 1.5           | 50                   |
| 50-32-160    | 12.5                   | 30              | 2900        | 1.9                   | 3             | 57                   |
| 50-32-200    | 18                     | 40              | 2900        | 3.92                  | 5.5           | 50                   |
| 50-32-200A   | 16                     | 32              | 2900        | 3.35                  | 4             | 42                   |
| 50-32-250    | 12.5                   | 80              | 2900        | 6.2                   | 11            | 44                   |
| 65-50-160    | 20                     | 32              | 2900        | 3.17                  | 5.5           | 55                   |
| 65-40-200    | 30                     | 48              | 2900        | 6.3                   | 7.5           | 62                   |
| 65-40-200A   | 25                     | 35              | 2900        | 4                     | 5.5           | 59                   |
| 65-40-250    | 25                     | 80              | 2900        | 10.3                  | 15            | 53                   |
| 65-40-250A   | 20                     | 51              | 2900        | 5.67                  | 7.5           | 49                   |
| 65-40-315    | 25                     | 125             | 2900        | 18.9                  | 30            | 45                   |
| 65-40-315A   | 22.5                   | 100             | 2900        | 15.3                  | 22            | 40                   |
| 80-50-200    | 50                     | 50              | 2900        | 9.7                   | 15            | 70                   |
| 80-50-200A   | 45                     | 40              | 2900        | 7.8                   | 11            | 63                   |
| 80-50-200B   | 40                     | 32              | 2900        | 6.37                  | 7.5           | 55                   |
| 80-50-250    | 50                     | 80              | 2900        | 17.1                  | 22            | 58                   |
| 80-50-250A   | 43                     | 60              | 2900        | 12.8                  | 15            | 55                   |
| 80-50-315    | 50                     | 125             | 2900        | 30.4                  | 45            | 56                   |
| 80-50-315A   | 45                     | 100             | 2900        | 23.6                  | 30            | 52                   |
| 100-65-200   | 100                    | 50              | 2900        | 18.4                  | 22            | 74                   |
| 100-65-200A  | 94                     | 44              | 2900        | 16                    | 22            | 70                   |

| 泵型号<br>Model | 流量<br>Capacity<br>m³/h | 扬程<br>Head<br>m | 转速<br>r/min | 功率 Power Kw           |               | 效率 η %<br>Efficiency |
|--------------|------------------------|-----------------|-------------|-----------------------|---------------|----------------------|
|              |                        |                 |             | 轴功率<br>Axle-<br>Power | 配用功率<br>Power |                      |
| 100-65-200B  | 87                     | 38              | 2900        | 13.8                  | 15            | 65                   |
| 100-65-200C  | 80                     | 32              | 2900        | 11.8                  | 15            | 59                   |
| 100-65-250   | 100                    | 80              | 2900        | 32.06                 | 37            | 68                   |
| 100-65-250A  | 95                     | 72              | 2900        | 29                    | 37            | 64                   |
| 100-65-250B  | 90                     | 65              | 2900        | 26.2                  | 30            | 61                   |
| 100-65-250C  | 85                     | 50              | 2900        | 20.3                  | 30            | 57                   |
| 100-65-315   | 100                    | 125             | 2900        | 50.06                 | 75            | 68                   |
| 100-65-315A  | 95                     | 113             | 2900        | 45.23                 | 55            | 64.63                |
| 100-65-315B  | 90                     | 100             | 2900        | 40.5                  | 55            | 60.5                 |
| 100-65-315C  | 82                     | 84              | 2900        | 34.76                 | 45            | 54                   |
| 125-100-200  | 200                    | 50              | 2900        | 35.4                  | 45            | 77                   |
| 125-100-200A | 178                    | 40              | 2900        | 26.6                  | 37            | 73                   |
| 125-100-250  | 200                    | 70              | 2900        | 47                    | 55            | 80                   |
| 125-100-250A | 190                    | 63              | 2900        | 41.6                  | 55            | 78                   |
| 125-100-250B | 180                    | 57              | 2900        | 37.9                  | 45            | 74                   |
| 125-100-250C | 170                    | 51              | 2900        | 32.15                 | 45            | 72                   |
| 125-100-250D | 150                    | 70              | 2900        | 40                    | 45            | 70                   |
| 150-180-200  | 350                    | 50              | 2900        | 60                    | 75            | 80                   |
| 150-150-200A | 313                    | 40              | 2900        | 45                    | 55            | 76                   |
| 200-150-400  | 350                    | 50              | 2900        | 61.8                  | 75            | 78                   |
| 200-150-400A | 330                    | 45              | 2900        | 52.8                  | 75            | 77                   |
| 250-200-400  | 500                    | 50              | 2900        | 86.2                  | 110           | 79                   |
| 250-200-500  | 500                    | 80              | 2900        | 136                   | 160           | 76.5                 |
| 250-200-500A | 400                    | 50              | 2900        | 75                    | 90            | 72                   |

## WCB220V 380V防爆油泵

WCB220V 380V explosion-proof oil pump

### 产品概述 Product overview

WCB防爆油泵，是专为汽油等可燃性液体设计的油泵，采用了铸铝机壳，配备铜齿轮，氟橡胶油封，具有安全可靠，自吸能力强，结构紧凑，使用方便等。

WCB explosion proof oil pump designed for gasoline, and various flammable liquid transfer, with the construction of die-cast aluminum motor casing, brass gear, viton seal, with advantage of safety and durable, high suction capacity and convenient.

### 特点 Advantage

用于汽油，甲醇，酒精  
220V 380V防爆电机  
氟橡胶油封  
铜齿轮  
国家防爆检测认证

For Gasoline, methanol, Alcohol  
220V 380V explosion proof motor  
viton seal  
Brass gear  
National explosion proof certificate

### 3.执行标准

GB 3836.1-2010  
GB 3836.2-2010

## WCB不锈钢SS304

WCB stainless steel Ss304

| 型号 Model              | WCB-50S                    | WCB-75S                    |
|-----------------------|----------------------------|----------------------------|
| 进口 Inlet              | 3/4"                       | 1"                         |
| 出口 Outlet             | 3/4"                       | 1"                         |
| 最大流量 Max Flow         | 50L/min                    | 75L/min                    |
| 电机 Motor              | 550W                       | 750W                       |
| 接口 Connect            | NPT/BSPF thread            |                            |
| 电压 Power              | AC220V/380V 50Hz           |                            |
| 转速 Speed              | 2800/1450 rpm              |                            |
| 泵体材料<br>Pump Material | SS304                      |                            |
| 净重 Net Weight         | 14kg/pc                    | 15kg/pc                    |
| 包装尺寸 Dimension        | 41×20.5×23cm<br>1pc/carton | 46.5×21×24cm<br>1pc/carton |

用于食用油，植物油，化学溶液，热油  
高硬度齿轮  
防腐蚀泵体  
耐高温  
氟橡胶

For cooking oil, plant oil, chemical liquid, Hot oil  
high hardness gear  
corrosion protection pump body  
high temperature resistance  
Viton seal



220V 防爆  
Ex-proof



380V 防爆  
Ex-proof



WCB 不锈钢  
Stainless Steel

## KCB型齿轮油泵 KCB GEAR PUMP (LARGE OUTPUT)



KCB-960



KCB-83.3

### 防爆齿轮油泵 Gear Oil Pump(Ex-Proof Motor)



### 产品概述 Product overview

KCB型齿轮油泵适用于输送各种不含固体颗粒，粘度为5-1500 C.s.t，温度在200℃以下的各种油类，如原油，柴油，煤油，润滑油，动植物油等。配用铜齿轮可输送低闪点液体，如汽油，苯等。

KCB Gear Oil Pump with large output, suitable for different oily liquid transfer which is without solid, with viscosity of 5-1500C.s.t, at temperature below 200℃, such as crude oil, diesel oil, lubricant oil, animal and vegetable oil etc. It's also available for transferring gasoline, benzene and other low-flash point liquid when equipped with bronze gear. Bypass valve is built in. SS304 for option.

### 型号说明 Model Code



### 特征 Features

结构紧凑，使用，保养方便。

由齿轮，轴，泵体，安全阀，轴端密封组成。

输送高粘度液体，低压力，大流量。

具有良好的自吸性能，故泵工作前不需灌入液体。

动力驱动可选电机或者柴油机。

内置安全阀，超载时起安全保护作用。

在输油系统中可用做传输，增压泵，在燃油系统中可用做输送，加压，喷射的燃油泵。在一切工业领域中，均可做润滑油泵用。

广泛应用于石油，化工，管道输油，船舶，矿山，冶金，电站等行业。

Smart and compact structure, convenient operation and maintenance.

Consist of gear, shaft, pump body, bypass valve, seal.

For high viscosity lubricant liquid transfer, low pressure, large output, up to 1200LPM.

Good self-priming, so it is not necessary to pour lubricant before working.

Electric motor or diesel engine driven.

Bypass valve built in, to protect pump when pump works under high pressure.

Performance as transfer pump or booster pump in oil delivery system,

Applied as fuel pump, lubricating pump as well.

Applicable in oil reservoirs, pipe transfer, ships, mining sites, factories and farms.

## KCB不锈钢泵头 KCB STAINLESS STEEL GEAR OIL PUMP



KCB 483.3



KCB-200

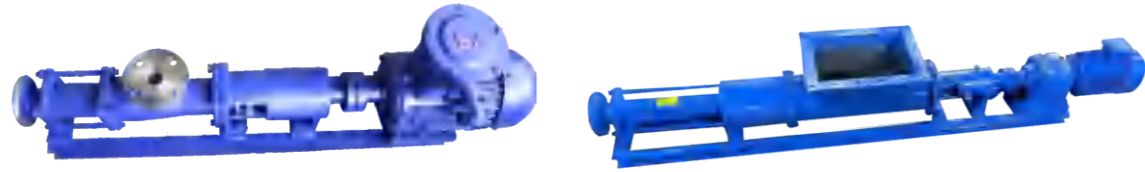


KCB-83.3

### 性能参数 Technical Specification

| 型号<br>Model | 口径<br>Size | 流量<br>Flow<br>(L/min) | 压力<br>Pressure<br>(Mpa) | 吸程<br>Suction<br>(m) | 功率<br>Power<br>(Kw) | 转速<br>Speed<br>(rpm) |
|-------------|------------|-----------------------|-------------------------|----------------------|---------------------|----------------------|
| KCB18.3     | 3/4"       | 18.3                  | 1.45                    | 5                    | 1.5                 | 1400                 |
| KCB33.3     | 3/4"       | 33.3                  | 1.45                    | 5                    | 2.2                 | 1420                 |
| KCB55       | 1"         | 55                    | 0.33                    | 5                    | 1.5                 | 1400                 |
| KCB83.3     | 1 1/2"     | 83.3                  | 0.33                    | 5                    | 2.2                 | 1420                 |
| KCB133.3    | 1 1/2"     | 133.3                 | 0.33                    | 5                    | 3                   | 1450                 |
| KCB200      | 2"         | 200                   | 0.33                    | 5                    | 4                   | 1450                 |
| KCB200      | 2"         | 200                   | 0.6                     | 5                    | 5.5                 | 1450                 |
| KCB200      | 2"         | 200                   | 1.0                     | 5                    | 7.5                 | 1450                 |
| KCB350      | 2"         | 350                   | 0.6                     | 5                    | 7.5                 | 1450                 |
| KCB300      | 3"         | 300                   | 0.36                    | 5                    | 5.5                 | 1450                 |
| KCB300      | 3"         | 300                   | 0.6                     | 5                    | 7.5                 | 1450                 |
| KCB483.3    | 3"         | 483.3                 | 0.36                    | 5                    | 7.5                 | 1450                 |
| KCB483.3    | 3"         | 483.3                 | 1.0                     | 5                    | 11                  | 1450                 |
| KCB650      | 3"         | 650                   | 0.6                     | 5                    | 11                  | 1450                 |
| KCB633      | 4"         | 633                   | 0.28                    | 5                    | 11                  | 1450                 |
| KCB960      | 4"         | 960                   | 0.3                     | 5                    | 18.5                | 1450                 |
| KCB1200     | 4"         | 1200                  | 0.3                     | 5                    | 22                  | 1450                 |

## 螺杆泵 Screw pump



### 产品概述 Product overview

G型单螺杆是一种内啮合的密闭式螺杆泵，属转子式容积泵，由于这种泵对介质的适应性强，流动平稳，吸入性能好，压力脉动小，除可以输送各种可流动的介质外，还可以输送高粘稠介质、含有硬质悬浮颗粒或固体颗粒的介质、含有纤维的介质，调节性能好，范围宽，效率高，因此，在环境保护、船舶、石油、医药、日化、食品、酿造、建筑、采矿、化学、印刷、造纸、电厂、锅炉等各种行业得到广泛应用。

G-type single screw is a closed screw pump with internal teeth, which belongs to the rotary displacement pump. Because of its strong adaptability to media, stable flow, good suction performance and small pressure pulsation, this pump can transport not only various flowable media, but also highly viscous media, media containing hard suspended particles or solid particles and media containing fibers, with good adjustment performance, wide range and high efficiency, so it is widely used in environmental protection, ships and petroleum.

### 工作原理 principle of operation

单螺杆泵是一种内啮合回转式容积泵，主要工作部件是偏心螺杆（转子）和固定的衬套（定子），由于转子、定子的特殊几何形状，分别形成数个单独的蜜蜂腔，转子的运转，将各个密封腔内的介质连续地、匀速地容积不变地从吸入端输送到压出端。由于有这些特性，单螺杆泵特别适合下列工况的工作：

1、输送高粘度的介质；2、输送含有固体颗粒或纤维的介质；3、要求连续、压力稳定、不出现周期性压力波动；4、要求搅动小，不破坏被输送介质的固有结构；5、低的噪声。

Single screw pump is a rotary displacement pump with internal teeth. The main working parts are eccentric screw (rotor) and fixed bushing (stator). Due to the special geometric shapes of rotor and stator, several separate bee cavities are formed respectively.

The operation of the rotor continuously and uniformly transports the medium in each sealed cavity from the suction end to the extrusion end. Because of these characteristics, single screw pump is especially suitable for the following working conditions:

1, conveying high viscosity medium; 2. Conveying media containing solid particles or fibers; 3, continuous, stable pressure, no periodic pressure fluctuations; 4. Small agitation is required, and the inherent structure of the conveyed medium is not damaged; 5. Low noise.

### <<单螺杆泵的性能表>>

#### 固定转速时的性能参数

| 型号     | 流量 (m³/h) | 压力 (MPa) | 允许最高转速 (r/min) | 电机功率 (kW) | 必需汽蚀余量 (m) | 进口法兰通径 (mm) | 出口法兰通径 (mm) | 允许颗粒直径 (mm) | 允许纤维长度 (mm) |
|--------|-----------|----------|----------------|-----------|------------|-------------|-------------|-------------|-------------|
| G20-1  | 0.8       | 0.6      | 960            | 0.75      | 4          | 25          | 25          | 1.5         | 25          |
| G20-2  |           | 1.2      |                | 1.5       |            |             |             |             |             |
| G25-1  | 2         | 0.6      | 960            | 1.5       |            | 32          | 25          | 2           | 30          |
| G25-2  |           | 1.2      |                | 2.2       |            |             |             |             |             |
| G30-1  | 5         | 0.6      | 960            | 2.2       |            | 50          | 40          | 2.5         | 35          |
| G30-2  |           | 1.2      |                | 3         |            |             |             |             |             |
| G35-1  | 8         | 0.6      | 960            | 3         |            | 65          | 50          | 3           | 40          |
| G35-2  |           | 1.2      |                | 4         |            |             |             |             |             |
| G40-1  | 12        | 0.6      | 960            | 4         |            | 80          | 65          | 3.8         | 45          |
| G40-2  |           | 1.2      |                | 5.5       |            |             |             |             |             |
| G50-1  | 14        | 0.6      | 720            | 5.5       | 100        | 80          | 5           | 50          |             |
| G50-2  |           | 1.2      |                | 7.5       |            |             |             |             |             |
| G60-1  | 22        | 0.6      | 720            | 11        | 125        | 100         | 6           | 60          |             |
| G60-2  |           | 1.2      |                | 15        |            |             |             |             |             |
| G70-1  | 38        | 0.6      | 720            | 11        | 150        | 125         | 8           | 70          |             |
| G70-2  |           | 1.2      |                | 15        |            |             |             |             |             |
| G85-1  | 56        | 0.6      | 630            | 15        | 150        | 150         | 10          | 80          |             |
| G85-2  |           | 1.2      |                | 30        |            |             |             |             |             |
| G105-1 | 100       | 0.6      | 500            | 30        | 200        | 200         | 15          | 110         |             |
| G105-2 |           | 1.2      |                | 55        |            |             |             |             |             |
| G135-1 | 150       | 0.6      | 400            | 45        | 200        | 250         | 20          | 150         |             |
| G135-2 |           | 1.2      |                | 90        |            |             |             |             |             |

## IH化工泵 IH chemical pump



### 产品概述 Product Introduction

IH单级单吸化工离心泵，适用于工业和城市给水、排水、亦可用于农业排灌。供输送清水或物理化学性质类似清水的其它液体之用，温度不高于80℃。

Ih型系列性能范围（按设计点计）：

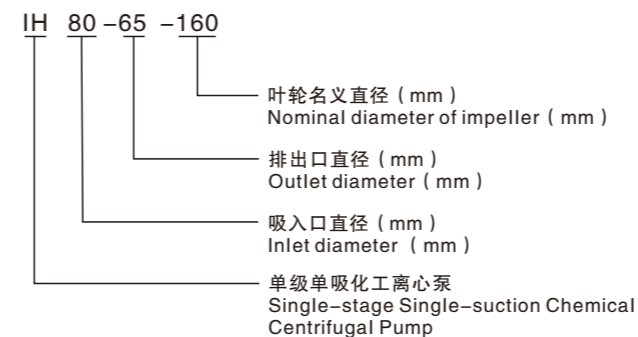
转 速：2900r/min和1450r/min  
吸入口直径：50~200mm  
流 量：6.3~400m³/h  
扬 程：5~125m

IH Series Single-stage Single-suction Chemical Centrifugal Pump are applicable for industrial and city water supply and drainage as well as for the agricultural irrigation and drainage to transport the clear water or other liquids with similar physical and chemical properties as clear water. The temperature shall not exceed 80℃.

The performance range of IH series (calculated by design point) is:

Rotation speed: 2900r/min and 1450r/min  
Inlet diameter: 50~200mm  
Flow: 6.3~400m³/h  
Lift head: 5~125m

### 型号意义 Type Designation



### 性能参数 Performance Parameter

| 型号<br>Type  | 流量<br>Flow<br>(m³/h) | 扬程<br>Lift<br>head<br>(m) | 转速<br>Rotation<br>speed<br>(r/min) | 电机功率<br>Motor<br>power<br>(kW) | 口径 (mm)<br>Diameter (mm) |              |
|-------------|----------------------|---------------------------|------------------------------------|--------------------------------|--------------------------|--------------|
|             |                      |                           |                                    |                                | 吸入<br>Suction            | 排出<br>Outlet |
| 50-32-125   | 12.5                 | 20                        | 2900                               | 2.2                            | 50                       | 32           |
|             | 6.3                  | 5                         | 1450                               | 0.55                           | 50                       | 32           |
| 50-32-160   | 12.5                 | 32                        | 2900                               | 3                              | 50                       | 32           |
|             | 6.3                  | 8                         | 1450                               | 0.55                           | 50                       | 32           |
| 50-32-200   | 12.5                 | 50                        | 2900                               | 5.5                            | 50                       | 32           |
|             | 6.3                  | 12.5                      | 1450                               | 0.75                           | 50                       | 32           |
| 50-32-250   | 12.5                 | 80                        | 2900                               | 11                             | 50                       | 32           |
|             | 6.3                  | 20                        | 1450                               | 1.5                            | 50                       | 32           |
| 65-50-125   | 25                   | 20                        | 2900                               | 3                              | 65                       | 50           |
|             | 12.5                 | 5                         | 1450                               | 0.55                           | 65                       | 50           |
| 65-50-160   | 25                   | 32                        | 2900                               | 5.5                            | 65                       | 50           |
|             | 12.5                 | 8                         | 1450                               | 0.75                           | 65                       | 50           |
| 65-40-200   | 25                   | 50                        | 2900                               | 7.5                            | 65                       | 40           |
|             | 12.5                 | 12.5                      | 1450                               | 1.1                            | 65                       | 40           |
| 65-40-250   | 25                   | 80                        | 2900                               | 15                             | 65                       | 40           |
|             | 12.5                 | 20                        | 1450                               | 2.2                            | 65                       | 40           |
| 65-40-315   | 25                   | 125                       | 2900                               | 3                              | 65                       | 40           |
|             | 12.5                 | 32                        | 1450                               | 4                              | 65                       | 40           |
| 80-65-125   | 50                   | 20                        | 2900                               | 5.5                            | 80                       | 65           |
|             | 25                   | 5                         | 1450                               | 0.75                           | 80                       | 65           |
| 80-65-160   | 50                   | 32                        | 2900                               | 7.5                            | 80                       | 65           |
|             | 25                   | 8                         | 1450                               | 1.5                            | 80                       | 65           |
| 80-50-200   | 50                   | 50                        | 2900                               | 15                             | 80                       | 50           |
|             | 25                   | 12.5                      | 1450                               | 2.2                            | 80                       | 50           |
| 80-50-250   | 50                   | 80                        | 2900                               | 22                             | 80                       | 50           |
|             | 25                   | 20                        | 1450                               | 3                              | 80                       | 50           |
| 80-50-315   | 50                   | 125                       | 2900                               | 37                             | 80                       | 50           |
|             | 25                   | 32                        | 1450                               | 5.5                            | 80                       | 50           |
| 100-80-125  | 100                  | 20                        | 2900                               | 11                             | 100                      | 80           |
|             | 50                   | 5                         | 1450                               | 1.5                            | 100                      | 80           |
| 100-80-160  | 100                  | 32                        | 2900                               | 15                             | 100                      | 80           |
|             | 50                   | 8                         | 1450                               | 2.2                            | 100                      | 80           |
| 100-65-200  | 100                  | 50                        | 2900                               | 22                             | 100                      | 65           |
|             | 50                   | 12.5                      | 1450                               | 4                              | 100                      | 65           |
| 100-65-250  | 100                  | 80                        | 2900                               | 37                             | 100                      | 65           |
|             | 50                   | 20                        | 1450                               | 5.5                            | 100                      | 65           |
| 100-65-315  | 100                  | 125                       | 2900                               | 75                             | 100                      | 65           |
|             | 50                   | 32                        | 1450                               | 11                             | 100                      | 65           |
| 125-100-200 | 200                  | 50                        | 2900                               | 45                             | 125                      | 100          |
|             | 100                  | 12.5                      | 1450                               | 7.5                            | 125                      | 100          |
| 125-100-250 | 200                  | 80                        | 2900                               | 75                             | 125                      | 100          |
|             | 100                  | 20                        | 1450                               | 11                             | 125                      | 100          |
| 125-100-315 | 200                  | 125                       | 2900                               | 110                            | 125                      | 100          |
|             | 100                  | 32                        | 1450                               | 15                             | 125                      | 100          |
| 125-100-400 | 100                  | 50                        | 1450                               | 30                             | 125                      | 100          |
| 150-125-250 | 200                  | 20                        | 1450                               | 18.5                           | 150                      | 125          |
| 150-125-315 | 200                  | 32                        | 1450                               | 30                             | 150                      | 125          |
| 150-125-400 | 200                  | 50                        | 1450                               | 45                             | 150                      | 125          |
| 200-150-250 | 400                  | 20                        | 1450                               | 37                             | 200                      | 150          |
| 200-150-315 | 400                  | 32                        | 1450                               | 55                             | 200                      | 150          |
| 200-150-400 | 400                  | 50                        | 1450                               | 90                             | 200                      | 150          |

## FYH/FYC液下化工泵 FYH/FYC Submerged Chemical Pump



FYH液下化工泵  
FYH Submerged Chemical Pump



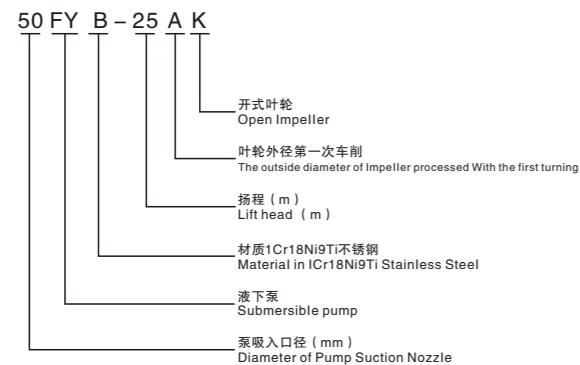
FYC长轴液化泵  
FYC long-axis liquefaction pump

### 产品概述 Product Introduction

FY系列液下泵是本单位在传统耐腐蚀液下泵基础上，经改进设计而生产的新型泵；该泵取消了其他液下泵普遍采用的机械密封和选用了独特结构的叶轮，使泵高效节能、无泄漏、寿命特长，从而广泛应用于石油、化工、制药、造纸、冶金、污水处理等行业。

FY series submerged pumps are new type pumps optimally designed on the basis of conventional corrosion resisting submerged pumps and with the advanced technology of the like products from Switzerland Sulzer. This pump abolished the use of mechanical seal that is generally accepted by other submerged pumps, and has utilized distinctively structured impeller to feature high efficiency, energy conservation, no leakage, and long service life. They are widely used in the industries of petroleum, chemical, pharmaceuticals, papermaking, metallurgy, sewage treatment, etc.

### 型号意义 Type Designation



### 性能参数 Performance Parameter

| 型号<br>Type | 出口直径<br>Outlet diameter (mm) | 流量<br>Flow        |       | 扬程<br>Lift head (m) | 转速<br>Rotation speed (r/min) | 功率<br>Power (kW)   |                     | 液下长度<br>Submerged Length (mm) |
|------------|------------------------------|-------------------|-------|---------------------|------------------------------|--------------------|---------------------|-------------------------------|
|            |                              | m <sup>3</sup> /h | L/s   |                     |                              | 轴功率<br>Shaft Power | 电机功率<br>Motor Power |                               |
| 25FY-16    | 25                           | 3.6               | 1     | 16                  | 2900                         | 0.713              | 0.75-1.5            |                               |
| 25FY-16A   | 25                           | 3.27              | 0.91  | 13                  | 2900                         | 0.716              | 0.75-1.5            |                               |
| 25FY-25    | 25                           | 3.6               | 1     | 25                  | 2900                         | 1.16               | 2.2                 |                               |
| 25FY-25A   | 25                           | 3.27              | 0.91  | 20                  | 2900                         | 1.16               | 2.2                 |                               |
| 25FY-41    | 25                           | 3.6               | 1     | 41                  | 2900                         | 2.51               | 4                   |                               |
| 25FY-41A   | 25                           | 3.27              | 0.91  | 33                  | 2900                         | 2.51               | 3                   |                               |
| 40FY-16    | 32                           | 7.2               | 2     | 16                  | 2900                         | 0.78               | 2.2                 |                               |
| 40FY-16A   | 32                           | 6.55              | 1.82  | 13                  | 2900                         | 0.78               | 1.5                 |                               |
| 40FY-26    | 32                           | 7.2               | 2     | 26                  | 2900                         | 1.45               | 3                   |                               |
| 40FY-26A   | 32                           | 6.55              | 1.82  | 21                  | 2900                         | 1.45               | 3                   |                               |
| 40FY-40    | 32                           | 7.2               | 2     | 40                  | 2900                         | 2.53               | 4-5.5               |                               |
| 40FY-40A   | 32                           | 6.55              | 1.82  | 32                  | 2900                         | 2.53               | 4-5.5               |                               |
| 50FY-16    | 40                           | 14.4              | 4     | 16                  | 2900                         | 1.18               | 3                   | 500                           |
| 50FY-16A   | 40                           | 13.1              | 3.64  | 13                  | 2900                         | 1.18               | 3                   |                               |
| 50FY-25    | 40                           | 14.4              | 4     | 25                  | 2900                         | 1.96               | 4                   |                               |
| 50FY-25A   | 40                           | 13.1              | 3.64  | 20                  | 2900                         | 1.96               | 3                   |                               |
| 50FY-40    | 40                           | 14.1              | 4     | 40                  | 2900                         | 3.73               | 5.5-7.5             |                               |
| 50FY-40A   | 40                           | 13.1              | 3.61  | 33                  | 2900                         | 3.73               | 4-5.5               |                               |
| 65FY-16    | 50                           | 28.8              | 8     | 16                  | 2900                         | 2.16               | 3-4                 | 3000                          |
| 65FY-16A   | 50                           | 26.2              | 7.28  | 13                  | 2900                         | 2.16               | 3                   |                               |
| 65FY-25    | 50                           | 28.8              | 8     | 25                  | 2900                         | 3.56               | 4-5.5               |                               |
| 65FY-25A   | 50                           | 26.2              | 7.28  | 21                  | 2900                         | 3.56               | 4-5.5               |                               |
| 65FY-40    | 50                           | 28.8              | 8     | 40                  | 2900                         | 6.04               | 7.5-11              |                               |
| 65FY-40A   | 50                           | 26.2              | 7.28  | 33                  | 2900                         | 6.04               | 7.5-11              |                               |
| 80FY-15    | 65                           | 54                | 15    | 15                  | 2900                         | 3.34               | 5.5-7.5             |                               |
| 80FY-15A   | 65                           | 49.1              | 13.65 | 12                  | 2900                         | 3.34               | 5.5-7.5             |                               |
| 80FY-24    | 65                           | 54                | 15    | 24                  | 2900                         | 5.46               | 7.5-11              |                               |
| 80FY-24A   | 65                           | 49.1              | 13.65 | 20                  | 2900                         | 5.43               | 7.5-11              |                               |
| 80FY-38    | 65                           | 54                | 15    | 38                  | 2900                         | 9.64               | 11-18.5             |                               |
| 80FY-38A   | 65                           | 49.1              | 13.65 | 31                  | 2900                         | 9.64               | 11-15               |                               |
| 100FY-23   | 80                           | 100.8             | 28    | 23                  | 2900                         | 9.25               | 11-18.5             |                               |
| 100FY-23A  | 80                           | 91.8              | 25.5  | 18                  | 2900                         | 9.25               | 11-15               |                               |
| 100FY-37   | 80                           | 100.8             | 28    | 37                  | 2900                         | 14.73              | 15-22               |                               |
| 100FY-37A  | 80                           | 91.8              | 25.5  | 31                  | 2900                         | 14.73              | 15-22               |                               |

## 气动隔膜泵 pneumatic diaphragm pump



塑料/PP



不锈钢/SS304

### 产品概述 Product overview

QBK气动隔膜泵采用压缩空气为动力源，适用于各种腐蚀性液体，带颗粒的液体，高粘度，易挥发，易燃，剧毒的液体抽吸。又能输送一些不易流动的介质，具有自吸泵，潜水泵，屏蔽泵，泥浆泵和杂质泵等输送机械的许多优点。

QBK Pneumatic Diaphragm Pumps also called Air Operated Double Diaphragm Pumps (AODD Pump) are rugged and durable self-priming, double diaphragm pumps, can handle any products that pours, form clean water to highly viscous, abrasive and chemically materials.

结构简单，安装维修方便，易损件少，可以浸没在介质中工作，亦可空转。吸程可达5m，最大出口压力达7bar，允许通过最大颗粒直径达10mm。最高输送介质粘度10,000C.s.t。材质：工程塑料，铝合金，铸铁，不锈钢。根据不同液体介质，隔膜材质可选丁晴橡胶，氟橡胶，聚四氟乙烯，聚四六乙烯。可通过升高或降低进气压力来调节泵流量从零到最大额定流量。

Simple structure, easy to use and maintenance, less wearing parts. It can be working under liquid and running dry as well. Suction up to 5m, max discharge pressure is 7bar, max grain diameter is 10mm, max liquid viscosity is 10,000C.s.t. Material: PP, Aluminum, Cast Iron, Stainless Steel. Diaphragm material: NBR, Viton, Teflon, FEP etc. Flow rate can be controlled from zero to max flow by increasing or decreasing air pressure.



铸铁/  
Cast Iron

| 型号<br>Model | 口径<br>Diameter (mm) | 最大流量<br>Max Flow (L/min) | 吸程<br>Suction (m) | 最大出口压力<br>Max Discharge Pressure(Bar) | 最大允许颗粒直径<br>Max Grain Dia (mm) | 最大空气消耗量<br>Max Air Consumption(L/min) |
|-------------|---------------------|--------------------------|-------------------|---------------------------------------|--------------------------------|---------------------------------------|
| QBK-8       | 8                   | 16                       | 5                 | 6.9                                   | 1                              | 300                                   |
| QBK-10/15   | 10/15               | 20                       | 5                 | 6.9                                   | 1                              | 300                                   |
| QBK-25      | 25                  | 100                      | 5                 | 6.9                                   | 2.5                            | 600                                   |
| QBK-40      | 40                  | 140                      | 5                 | 6.9                                   | 4.5                            | 600                                   |
| QBK-50      | 50                  | 240                      | 5                 | 6.9                                   | 8                              | 900                                   |
| QBK-65      | 65                  | 280                      | 5                 | 6.9                                   | 8                              | 900                                   |
| QBK-80      | 80                  | 400                      | 5                 | 6.9                                   | 10                             | 1500                                  |
| QBK-100     | 100                 | 480                      | 5                 | 6.9                                   | 10                             | 1500                                  |

## HW系列防爆不锈钢自吸泵

HW series explosion-proof stainless steel self-priming pump



380V防爆



220V防爆

### 产品概述 Product overview

HW系列泵是我公司自行研制的不锈钢自吸防爆泵，泵的叶轮采用半开式结构形式，由于产品集优良结构、性能、造型于一身，兼过流零件及连接架采用优质不锈钢材料制造，所以具有耐腐蚀性能可靠，使用维护方便、结构紧凑、能耗低、密封性能好等一系列优点。管路不需安装底阀，工作前只需保证泵体内储有定量引液即可。

### 主要用途

该系列泵可输送温度不高于150℃，不低于-40℃。含有细小软颗粒或纤维质，带腐蚀性或有卫生要求的液体，广泛适用于食品、饮料、医药、污水处理、化工、电镀、漂染、精细化工等行业使用。可输送尿素、甲醇、二甲苯、汽油、柴油等易燃易爆介质。

### 使用条件

- 1.以叶轮中心为准，潜入液体深度不得超过10m。
- 2.输送介质温度不高于150℃，不低于-40℃
- 3.输送介质的PH值为4-10的介质

HW series pump is a stainless steel self-priming explosion-proof pump developed by our company. The impeller of the pump adopts a semi-open structure. Due to the excellent structure, performance and shape of the product, the over-current parts and connecting frame are made of high-quality stainless steel. Therefore, it has a lots of advantages such as reliable corrosion resistance, convenient use and maintenance, compact structure, low energy consumption and good sealing performance. The pipeline does not need to be installed with a bottom valve. It is only necessary to ensure that the pump body has a quantitative liquid before storage.

### The main purpose

This series pump could transfer liquid which temperature is not higher than 150℃, not lower than -40℃, contains tiny soft particle or fibre with corrosive or sanitary requirement widely used in food, beverage, pharmaceutical, sewage treatment, chemical, electroplating, bleaching, fine chemicals and other industries. It can transport flammable and explosive media such as urea, methanol, xylene, gasoline and diesel.

### Conditions of Use

1. Based on the center of the impeller, the depth of the submerged liquid shall not exceed 10m.
2. The temperature of the conveying medium is not higher than 150℃, not lower than -40℃
3. transferring liquid PH range in 4-10

### 技术参数 Performance Specification

| 型号 Model                    | HW25-3-10           | HW25-3-18 | HW25-6-18 | HW40-8-18 | HW40-13-20 | HW50-13-22 |
|-----------------------------|---------------------|-----------|-----------|-----------|------------|------------|
| 口径 Size                     | 25mm                | 25mm      | 25mm      | 40mm      | 40mm       | 50mm       |
| 流量 Flow (m <sup>3</sup> /h) | 3                   | 3         | 6         | 8         | 13         | 13         |
| 扬程 Head                     | 10                  | 18        | 18        | 18        | 20         | 22         |
| 功率 Power                    | 0.25KW              | 0.55KW    | 0.75KW    | 1.1KW     | 1.5KW      | 2.2KW      |
| 转速 Speed                    | 2800rpm             | 2800rpm   | 2800rpm   | 2800rpm   | 2800rpm    | 2800rpm    |
| 电压 Voltage                  | 220/380             | 220/380   | 220/380   | 220/380   | 220/380    | 220/380    |
| 叶轮配置 Impeller configuration | 不锈钢 stainless steel |           |           |           |            |            |

## SB系列电动抽液泵

SB ELECTRIC BARREL PUMP

### 防爆系列 Ex-Proof Series

| 型号 Model               | SB-3-1                    | SB-4          |
|------------------------|---------------------------|---------------|
| 进出口 Dia(mm)            | 50/25                     | 50/25         |
| 最大流量 Max Flow          | 150L/min                  | 150L/min      |
| 电机 Motor               | 880W                      | 880W          |
| 电压 Power               | AC220V                    | 50Hz          |
| 转速 Speed               | 12000 rpm                 |               |
| 泵体材料 Pump Material     | 不锈钢(SS304)                | 铝合金(Aluminum) |
| 叶轮材料 Impeller Material | 不锈钢(SS304)                | 塑料(PP)        |
| 净重 Net Weight          | 12kg/pc                   | 6.3kg/pc      |
| 包装尺寸 Dimension         | 145×31×20cm<br>2pc/carton |               |

### 特点 Advantage

用于汽油，甲醇，酒精，机油  
220V 单相防爆电机  
氟橡胶油封  
国家防爆检测认证

For Gasoline, methanol, Alcohol, Engine oil  
220V Single phase explosion proof motor  
viton seal  
National explosion proof certificate

| 型号 Model               | SB-6                      | SB-8          |
|------------------------|---------------------------|---------------|
| 进出口 Dia(mm)            | 40/25                     | 40/25         |
| 最大流量 Max Flow          | 100L/min                  | 100L/min      |
| 电机 Motor               | 550W                      | 550W          |
| 电压 Power               | AC220V                    | 50Hz          |
| 转速 Speed               | 8000 rpm                  |               |
| 泵体材料 Pump Material     | 不锈钢(SS304)                | 铝合金(Aluminum) |
| 叶轮材料 Impeller Material | 不锈钢(SS304)                | 塑料(PP)        |
| 净重 Net Weight          | 6.6kg/pc                  | 5.4kg/pc      |
| 包装尺寸 Dimension         | 132×31×18cm<br>2pc/carton |               |

用于食用油，植物油，化学溶液，热油  
高硬度齿轮  
防腐泵体  
耐高温  
氟橡胶

For cooking oil, plant oil, chemical liquid, Hot oil  
high hardness gear  
corrosion protection pump body  
high temperature resistance  
Viton seal



不锈钢材质  
Stainless steel material



不锈钢材质  
Stainless steel material

## YBX4三相防爆电机

YBX4 three-phase explosion-proof motor



380V防爆电机  
EX-Motor



### 特点

#### Advantage

380V单相防爆电机  
效率高，使用寿命长  
结构紧凑，噪音低，运行平稳  
故障率低，安装维修方便

380V single phase, explosion proof  
high efficiency, long lifespan.  
Best performance, lower noise.  
Easy to install and repair, low failure rate.

|                          |            |       |        |       |       |       |      |      |       |       |
|--------------------------|------------|-------|--------|-------|-------|-------|------|------|-------|-------|
| 功率 (kW) Power            | 0.37W      | 0.55W | 0.75W  | 1.1KW | 1.5KW | 2.2KW | 3KW  | 4KW  | 5.5KW | 7.5KW |
| 电压Power                  | AC380V     |       |        |       |       |       |      |      |       |       |
| 绝缘等级<br>Insulation class | F          |       |        |       |       |       |      |      |       |       |
| 转速 (rpm) Speed           | 1450/2900  |       |        |       |       |       |      |      |       |       |
| 效率Efficiency             | 94.2%      |       |        |       |       |       |      |      |       |       |
| 防护等级<br>Protection class | IP55       |       |        |       |       |       |      |      |       |       |
| 防爆标志Ex-mark              | ExdIIBT4Gb |       |        |       |       |       |      |      |       |       |
| 功率 (kW) Power            | 11KW       | 15KW  | 18.5KW | 22KW  | 30KW  | 37KW  | 45KW | 55KW | 75KW  | 90KW  |
| 电压Power                  | AC380V     |       |        |       |       |       |      |      |       |       |
| 绝缘等级<br>Insulation class | F          |       |        |       |       |       |      |      |       |       |
| 转速 (rpm) Speed           | 1450/2900  |       |        |       |       |       |      |      |       |       |
| 效率Efficiency             | 94.2%      |       |        |       |       |       |      |      |       |       |
| 防护等级<br>Protection class | IP55       |       |        |       |       |       |      |      |       |       |
| 防爆标志Ex-mark              | ExdIIBT4Gb |       |        |       |       |       |      |      |       |       |

## YBX4单相防爆电机

YBX4 single-phase explosion-proof motor



### 特点

#### Advantage

220V单相防爆电机  
效率高，使用寿命长  
结构紧凑，噪音低，运行平稳  
故障率低，安装维修方便

220V single phase, explosion proof  
high efficiency, long lifespan.  
Best performance, lower noise.  
Easy to install and repair, low failure rate.

|                          |            |       |       |       |       |     |     |
|--------------------------|------------|-------|-------|-------|-------|-----|-----|
| 功率 (kW) Power            | 0.55W      | 0.75W | 1.1KW | 1.5KW | 2.2KW | 3KW | 4KW |
| 电压Power                  | AC220V     |       |       |       |       |     |     |
| 绝缘等级<br>Insulation class | F          |       |       |       |       |     |     |
| 转速 (rpm) Speed           | 1450/2900  |       |       |       |       |     |     |
| 效率Efficiency             | 94.2%      |       |       |       |       |     |     |
| 防护等级<br>Protection class | IP55       |       |       |       |       |     |     |
| 防爆标志Ex-mark              | ExdIIBT4Gb |       |       |       |       |     |     |

## KL BX防爆控制柜系列

KL BX explosion-proof control cabinet series



### 产品概述 Product overview

#### 主要用途及适用范围

防爆控制柜（防爆配电箱）（以下简称配电箱）适用于工业厂房、化工工厂、蒸汽环境、易燃易爆、粉尘环境等场所。

#### 型号的组成及其代表意义

KLRX-□  
电压：AC220V、AC380V、AC660V、AC1140V  
防爆控制柜（防爆配电箱）

#### 执行标准

GB 3836.1-2010 爆炸性环境 第1部分：设备 通用要求  
GB 3836.2-2010 爆炸性环境 第2部分：由隔爆外壳“d”保护的  
GB 3836.2-2010 爆炸性环境 第3部分：由增安型“e”保护的  
GB 12476.1-2013 可燃性粉尘环境用电气设备 第1部分：通用要求  
GB 12476.5-2013 可燃性粉尘环境用电气设备 第5部分：外壳保护型“tD”  
GB/T 13384-2008 机电产品包装 通用技术要求  
GB 14048.1-2012 低压开关设备和控制设备 总则  
GB/T 4208-2017 外壳防护等级（IP代码）

#### 结构概述

4.1 配电箱外壳采用碳钢Q235焊接而成，表面高压静电喷塑。

#### 主要技术参数及性能

5.1 防爆标志：Ex de IIB T4 Gb；Ex tD A21 Ip66 T130℃  
5.2 额定电压：AC220/380/660/1140V  
5.3 额定电流：400A  
5.4 引入口规格：M75X1.5  
5.5 电缆外径：Φ20~25mm  
5.6 防护等级：IP66

#### 正常工作条件和安装条件

6.1 海拔高度：不超过2000米；  
6.2 大气压力：80Kpa~110Kpa  
6.3 周围环境温度：-20℃~+40℃  
6.4 大气条件：  
6.4.1 周围空气相对湿度不大于95%（25℃时）；  
6.4.2 可用于无明显破坏金属和绝缘的腐蚀性气体或蒸气的环境中；  
6.4.3 污染等级：3级  
6.5 安装类别：II类  
6.6 应安装在无明显摇动和冲击振动的地方。



壁式防爆控制柜  
Wall explosion-proof control cabinet



立式防爆控制柜  
Vertical explosion-proof control cabinet

DONG HANG